



Kean Street
London, WC2B

CHESTERTONS





Contemporary one bedroom apartment in one of Covent Garden's most sought after residential blocks. This warehouse style apartment makes the perfect central London home. Kean Street is discreetly located just off Drury Lane.

- High Quality Finish
- Stylish Interior
- Warehouse Style Windows

£3,033 pcm

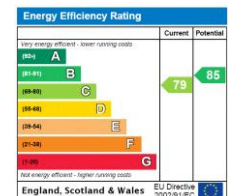
Additional tenant charges apply (fees apply to non-AST tenancies only)

Tenancy Agreement Fee: £300

References per Tenant/Guarantor: £60

Inventory check (approx. £100 – £250 inc. VAT)

chestertons.co.uk/property-to-rent/applicable-fees

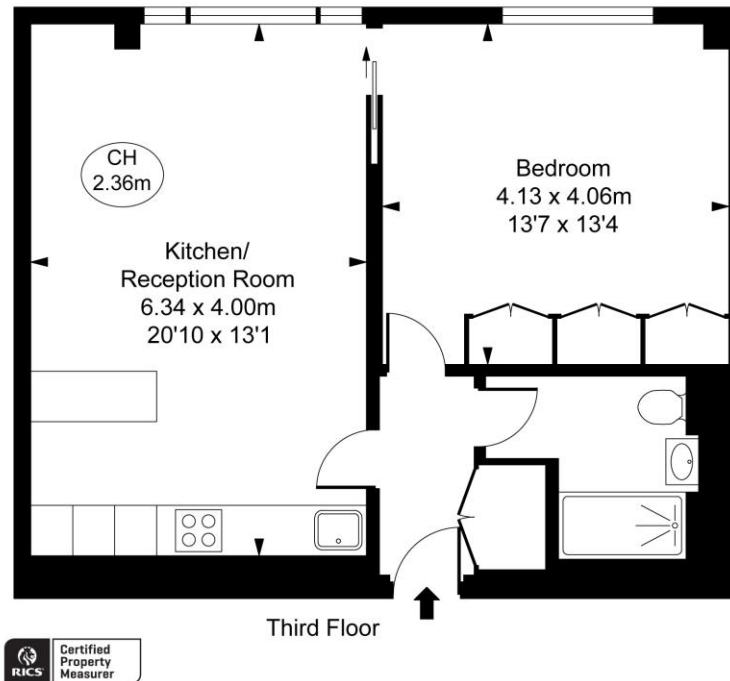


Minimum Term: 12 months
Deposit Required: £3,499.62
Local Authority: City Of Westminster Council
Council Tax Band: F
EPC Rating: C
Furnished

Chestertons Covent Garden Lettings

196 Shaftesbury Avenue
 Covent Garden
 London
 WC2H 8JF
coventgarden@chestertons.co.uk
 02030408400

Kean Street, WC2B
Approximate Gross Internal Area
52.47 sq m / 565 sq ft
(CH = Ceiling Heights)



This plan is not to scale. It is for guidance and not for valuation purposes.
All measurements and areas are approximate only, and have been prepared in accordance with the current edition of the RICS Code of Measuring Practice.
© Fulham Performance

Chesterton Global Ltd trading as Chestertons for themselves and for the vendor of this property whose agents they are, give notice that (i) these particulars do not constitute any part of an offer or contract, (ii) all statements contained within these particulars are made without responsibility on the part of Chestertons or the vendor, (iii) whilst made in good faith, none of the statements contained within these particulars are to be relied upon as a statement or representation of fact, (iv) any intending purchasers must satisfy themselves by inspection or otherwise as to the correctness of each of the statements contained within these particulars, (v) the vendor does not make or give either Chestertons or any person in their employment any authority to make or give representation or warranty whatsoever in relation to this property. Wide angle lenses may be used. ©Copyright Chestertons | Chesterton Global Ltd | Registered Office 40 Connaught Street, Hyde Park, London W2 2AB Registered Company Number 05334580.

