

# Bloomsbury Plaza

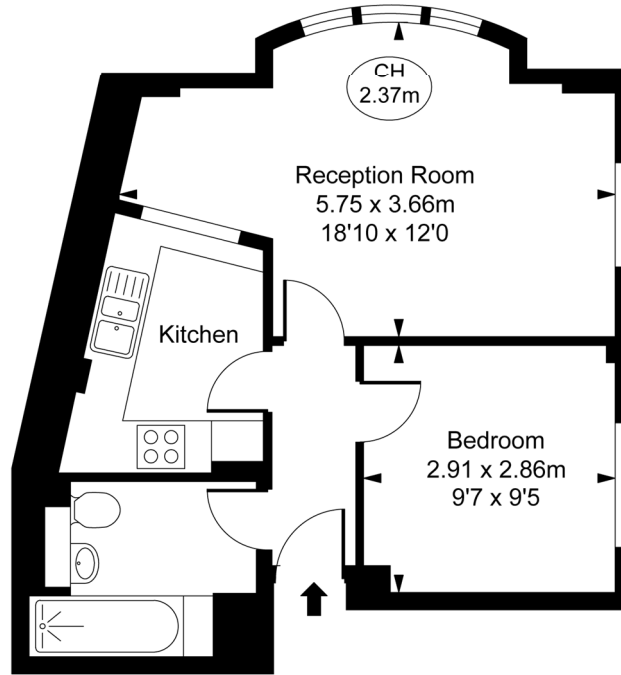
12-18 Bloomsbury Street, WC1B

£425 per week  
(£1,841.67 pcm)

Bright ONE bedroom apartment found on the 2nd floor of this desirable portered development. Benefitting from wooden flooring throughout, contemporary bathroom and a semi open plan kitchen. VIDEO VIEWING AVAILABLE.

**CHESTERTONS**

Bloomsbury Plaza,  
Bloomsbury, WC1B  
Approximate Gross Internal Area  
39.34 sq m / 423 sq ft  
( CH = Ceiling Heights )



Second Floor

This plan is not to scale. It is for guidance and not for valuation purposes.  
All measurements and areas are approximate only, and have been prepared in accordance with the current edition of the RICS Code of Measuring Practice.  
© Fulham Performance

**Tenure:** Long Let

**Furnished**

Additional tenant charges apply (fees apply to non-AST tenancies only)

Tenancy Agreement Fee: £300

References per Tenant/Guarantor: £60

Inventory check (approx. £100 – £250 inc. VAT)

[chestertons.com/property-to-rent/applicable-fees](https://chestertons.com/property-to-rent/applicable-fees)

Energy Efficiency Rating		
	Current	Potential
Very energy efficient - lower running costs		
(92+) <b>A</b>		
(81-91) <b>B</b>		
(69-80) <b>C</b>	75	81
(55-68) <b>D</b>		
(39-54) <b>E</b>		
(21-38) <b>F</b>		
(1-20) <b>G</b>		
Not energy efficient - higher running costs		
England, Scotland & Wales		
EU Directive 2002/91/EC		

### Chestertons Covent Garden Lettings

196 Shaftesbury Avenue

Covent Garden

London

WC2H 8JF

[lettings.coventgarden@chestertons.com](mailto:lettings.coventgarden@chestertons.com)

02030408400

Chesterton Global Ltd trading as Chestertons for themselves and for the vendor of this property whose agents they are, give notice that (i) these particulars do not constitute any part of an offer or contract, (ii) all statements contained within these particulars are made without responsibility on the part of Chestertons or the vendor, (iii) whilst made in good faith, none of the statements contained within these particulars are to be relied upon as a statement or representation of fact, (iv) any intending purchasers must satisfy themselves by inspection or otherwise as to the correctness of each of the statements contained within these particulars, (v) the vendor does not make or give either Chestertons or any person in their employment any authority to make or give representation or warranty whatsoever in relation to this property. Wide angle lenses may be used. ©Copyright Chestertons | Chesterton Global Ltd | Registered Office 40 Connaught Street, Hyde Park, London W2 2AB Registered Company Number 05334580.



This paper is  
100% recyclable