



Queen Alexandra Mansions

Hastings Street, WC1H

£4,766.67 per month
(£1,100.00 per week)

A bright and airy three/four bedroom apartment set in a beautiful mansion block only a stone's throw from Kings Cross station.

CHESTERTONS



Queen Alexandra Mansions

Hastings Street, WC1H

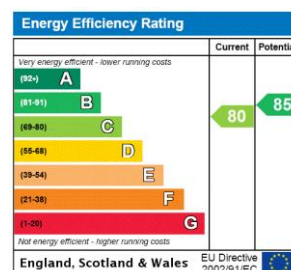
- Well-equipped Mansion Block
- Three/four double bedrooms
- Bright and airy reception
- Eat in kitchen
- Three piece bathroom
- Moments from Kings Cross



A bright and airy three/four bedroom apartment set in a beautiful mansion block only a stone's throw from Kings Cross station. This well-equipped property boasts a large eat in kitchen, bathroom, four bedrooms and excellent storage.

Located moments from Kings Cross and the many wonderful Universities, cafes, restaurants, parks and other amenities this truly fantastic location has to offer.

Minimum Term: 12 months
Deposit Required: £6,600.00
Local Authority: London Borough Of Camden
Council Tax Band: E
EPC Rating: C
Furnished



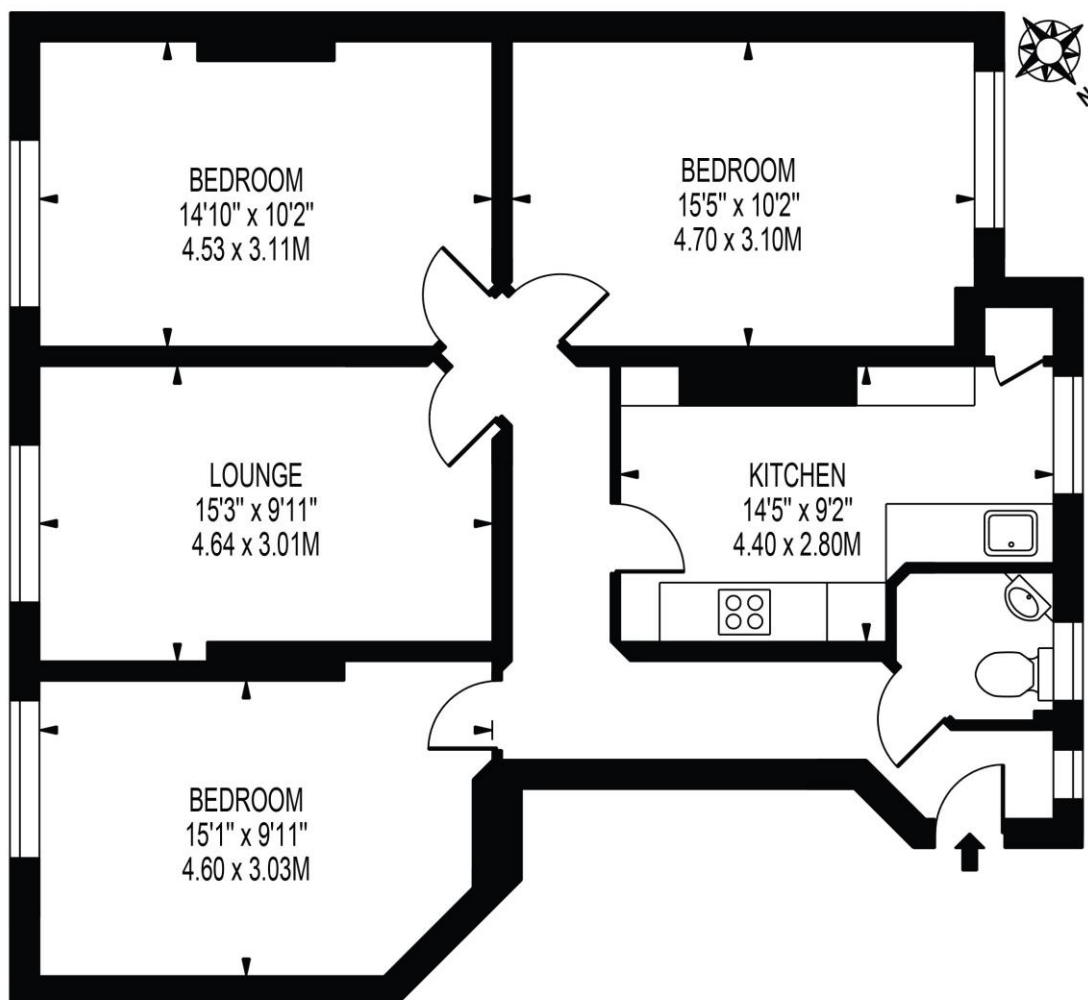
Chestertons Covent Garden Lettings

196 Shaftesbury Avenue
 Covent Garden
 London
 WC2H 8JF
 coventgardenlettingsusers@chestertons.co.uk
 02030408400
 chestertons.co.uk

Additional tenant charges apply (fees apply to non-AST tenancies only)
 Tenancy Agreement Fee: £300
 References per Tenant/Guarantor: £60
 Inventory check (approx. £100 – £250 inc. VAT)
 chestertons.co.uk/property-to-rent/applicable-fees

QUEEN ALEXANDRA MANSIONS

APPROXIMATE GROSS INTERNAL FLOOR AREA: 897 SQ FT - 83.29 SQ M



RAISED GROUND FLOOR

FOR ILLUSTRATION PURPOSES ONLY

THIS FLOOR PLAN SHOULD BE USED AS A GENERAL OUTLINE FOR GUIDANCE ONLY AND DOES NOT CONSTITUTE IN WHOLE OR IN PART AN OFFER OR CONTRACT. ANY INTENDING PURCHASER OR LESSEE SHOULD SATISFY THEMSELVES BY INSPECTION, SEARCHES, ENQUIRIES AND FULL SURVEY AS TO THE CORRECTNESS OF EACH STATEMENT. ANY AREAS, MEASUREMENTS OR DISTANCES QUOTED ARE APPROXIMATE AND SHOULD NOT BE USED TO VALUE A PROPERTY OR BE THE BASIS OF ANY SALE OR LET.

