



Sage Way

London, WC1X

£2,275 per month
(£525 per week)

A bright 1 bedroom apartment found on the 1st floor on this purpose built development within close proximity to Kings Cross. Benefiting from wooden flooring, separate kitchen and access to communal garden, video viewing available.



Sage Way
London, WC1X



A bright 1 bedroom apartment found on the 1st floor on this purpose built development within close proximity to Kings Cross. Benefiting from wooden flooring, separate kitchen and access to communal garden, video viewing available.

Inclusive of heating and hot water, available NOW on a furnished basis.

Minimum Term: months
Deposit Required: £2,625.00
Local Authority:
Council Tax Band: D
EPC Rating: C
Furnished

Energy Efficiency Rating		
	Current	Potential
Very energy efficient - lower running costs		
A (92-100)		
B (81-91)		
C (69-80)	79	81
D (55-68)		
E (39-54)		
F (21-38)		
G (1-20)		
Not energy efficient - higher running costs		
England, Scotland & Wales		EU Directive 2002/91/EC

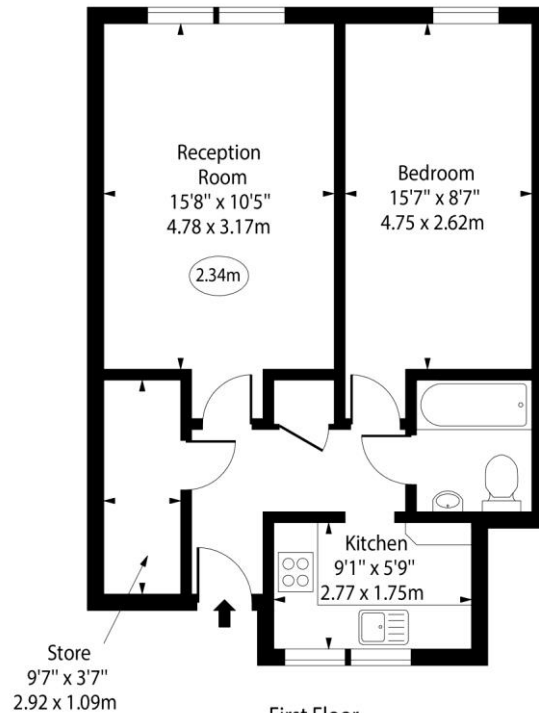
Chestertons Covent Garden Lettings

196 Shaftesbury Avenue
 Covent Garden
 London
 WC2H 8JF
 coventgardenlettingsusers@chestertons.co.uk
 02030408400
 chestertons.co.uk

Additional tenant charges apply (fees apply to non-AST tenancies only)
 Tenancy Agreement Fee: £300
 References per Tenant/Guarantor: £60
 Inventory check (approx. £100 – £250 inc. VAT)
 chestertons.co.uk/property-to-rent/applicable-fees

Sage Way

○ - Ceiling Height



Approx Gross Internal Area 520 Sq Ft - 48.31 Sq M

For Illustration Purposes Only - Not To Scale
www.goldlens.co.uk
Ref. No. 026061.1K

