



# Gower Mews Mansions

Gower Mews, WC1E

£3,033.33 per month  
(£700 per week)

Located on a quiet mews street in the heart of Bloomsbury is this 2 double bedroom apartment found on the top floor of this sought after mansion block with access to private balcony. Video Viewing available.

CHESTERTONS



# Gower Mews Mansions

Gower Mews, WC1E



Located on a quiet mews street in the heart of Bloomsbury is this 2 double bedroom apartment found on the top floor of this sought after mansion block with access to private balcony. Video Viewing available.

**Minimum Term:** 12 months  
**Deposit Required:** £3,500.00  
**Local Authority:** Camden  
**Council Tax Band:** E  
**EPC Rating:** C  
**Furnished, Part Furnished, Unfurnished**

Energy Efficiency Rating		
	Current	Potential
Very energy efficient - lower running costs		
(94-100) <b>A</b>		
(81-93) <b>B</b>		
(69-80) <b>C</b>	75	75
(55-68) <b>D</b>		
(39-54) <b>E</b>		
(21-38) <b>F</b>		
(1-20) <b>G</b>		
Not energy efficient - higher running costs		
England, Scotland & Wales EU Directive 2002/91/EC		

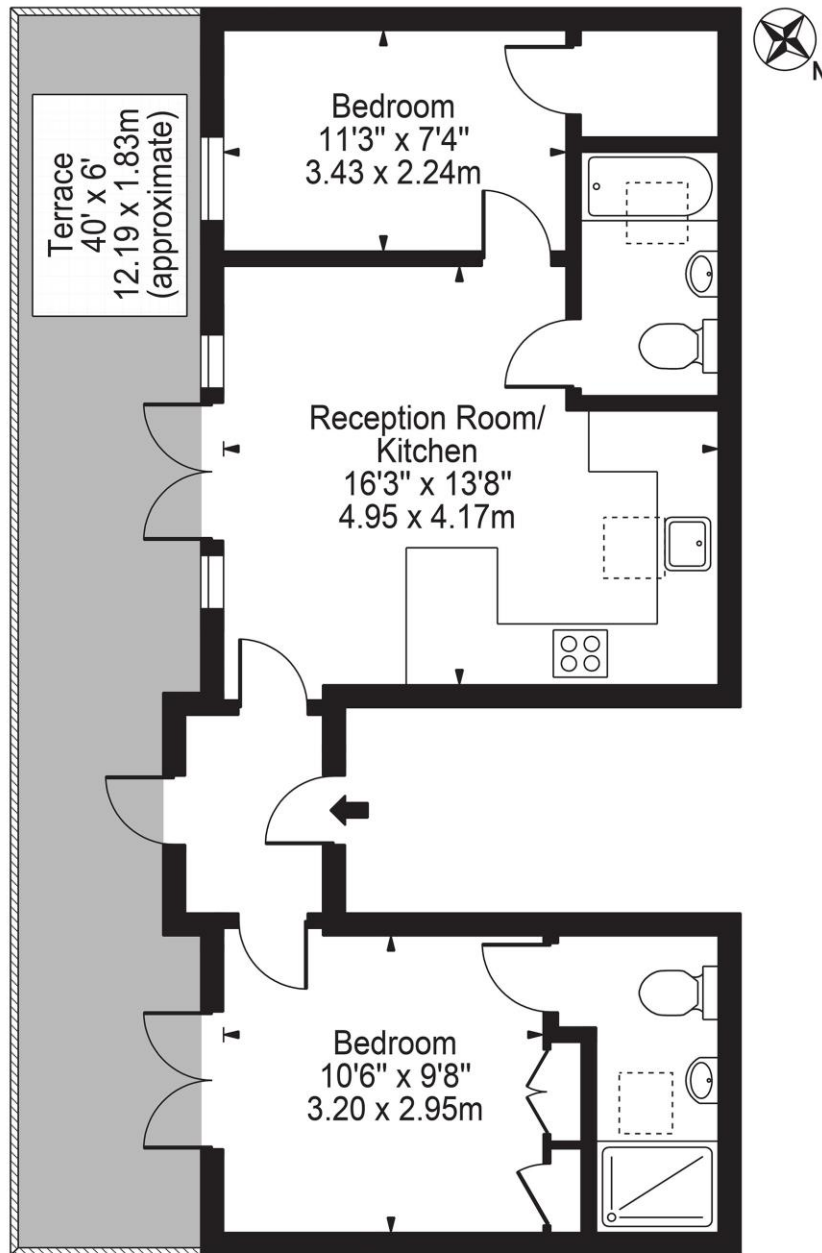
### *Chestertons Covent Garden Lettings*

196 Shaftesbury Avenue  
 Covent Garden  
 London  
 WC2H 8JF  
 coventgardenlettingsusers@chestertons.co.uk  
 02030408400  
 chestertons.co.uk

Additional tenant charges apply (fees apply to non-AST tenancies only)  
 Tenancy Agreement Fee: £300  
 References per Tenant/Guarantor: £60  
 Inventory check (approx. £100 – £250 inc. VAT)  
 chestertons.co.uk/property-to-rent/applicable-fees

# Gower Mews, WC1

Approx. Gross Internal Area 543 Sq Ft - 50.45 Sq M



## Second Floor

For Illustration Purposes Only - Not To Scale

This floor plan should be used as a general outline for guidance only and does not constitute in whole or in part an offer or contract. Any intending purchaser or lessee should satisfy themselves by inspection, searches, enquiries and full survey as to the correctness of each statement. Any areas, measurements or distances quoted are approximate and should not be used to value a property or be the basis of any sale or let.

