



# Bedford Court Mansions

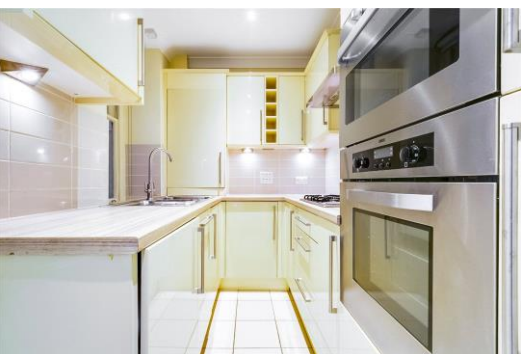
Adeline Place, WC1B

£2,491.67 per month  
(£575 per week)

One Bedroom apartment found within a prestigious mansion block close by to the private gardens of Bedford Square and the choice of the Northern or Central tube lines within a short distance.

**CHESTERTONS**





# Bedford Court Mansions

## Adeline Place, WC1B

- \*NO TENANT FEES\*
- Modern apartment
- Wooden flooring
- Separate kitchen
- Close to the area's Universities for students and academics

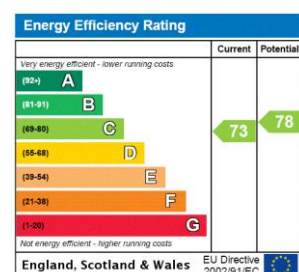




Located within a prestigious mansion block close by to the private gardens of Bedford Square and the choice of the Northern or Central tube lines within a short distance.

Comprising of a reception, separate kitchen, double bedroom & bathroom.

**Minimum Term:** months  
**Deposit Required:** £2,875.00  
**Local Authority:** London Borough Of Camden  
**Council Tax Band:** C  
**EPC Rating:** C  
**Furnished, Part Furnished, Unfurnished**



### *Chestertons Covent Garden Lettings*

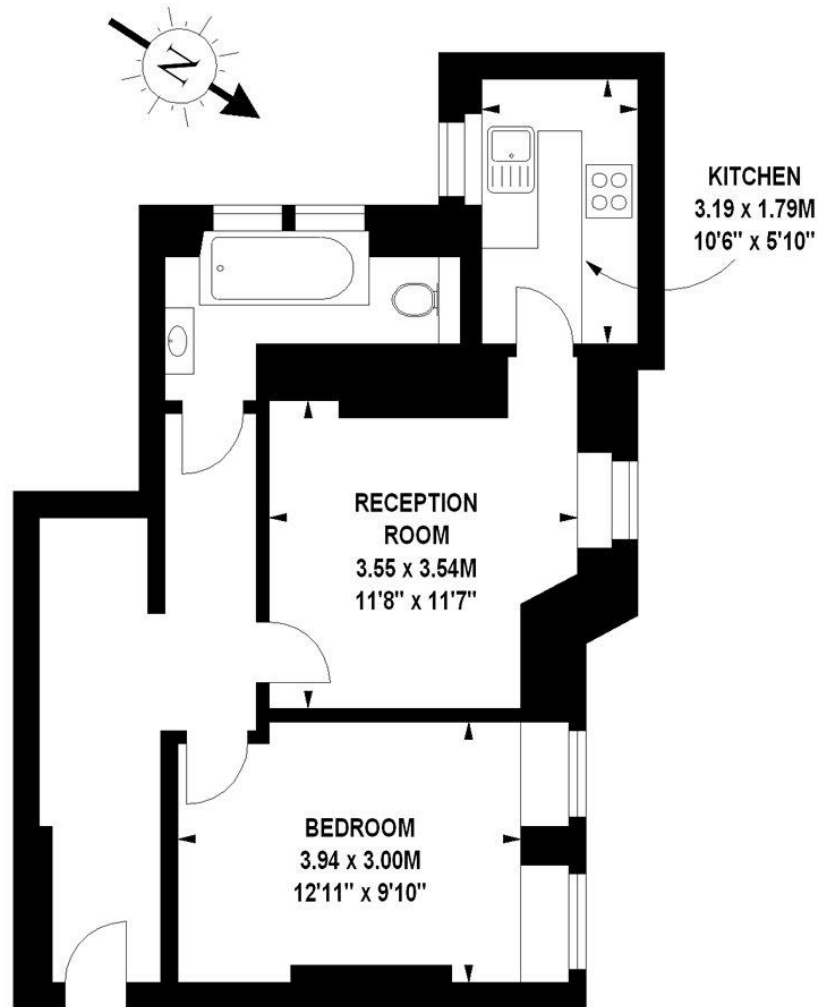
196 Shaftesbury Avenue  
 Covent Garden  
 London  
 WC2H 8JF  
 coventgarden@chestertons.co.uk  
 02030408400  
 chestertons.co.uk

Additional tenant charges apply (fees apply to non-AST tenancies only)  
 Tenancy Agreement Fee: £300  
 References per Tenant/Guarantor: £60  
 Inventory check (approx. £100 – £250 inc. VAT)  
 chestertons.co.uk/property-to-rent/applicable-fees

# Bedford Court Mansions, WC1B

Approximate gross internal area

49.42 sq m / 532 sq ft



## Basement

The floor plan is not to scale and measurements and areas shown are approximate and therefore should be used for illustrative purposes only.

The plan has been prepared in accordance with the RICS code of Measuring Practice and whilst we have confidence in the information produced, it must be not be relied on.

If there is any aspect of particular importance, you should carry out or commission your own inspection of the property.

Copyright of FeaturePRO.

