



Shelton Street

London, WC2H

£6,500 per month
(£1,500 per week)

SHORT LET: 2 month minimum, 6 month maximum all bills included:
Chestertons are proud to exclusively offer this 2 bedroom apartment,
located on the ever famous Shelton St, WC2. Available for short let.

CHESTERTONS



Shelton Street

London, WC2H

•



EXCLUSIVELY MARKETING BY CHESTERTONS.

SHORT LET STAYS ONLY: 2 months minimum, 6 months maximum.

Spanning approximately 835 sqft, this beautifully presented home boasts a bright and airy interior, enhanced by stylish finishes and an abundance of natural light.

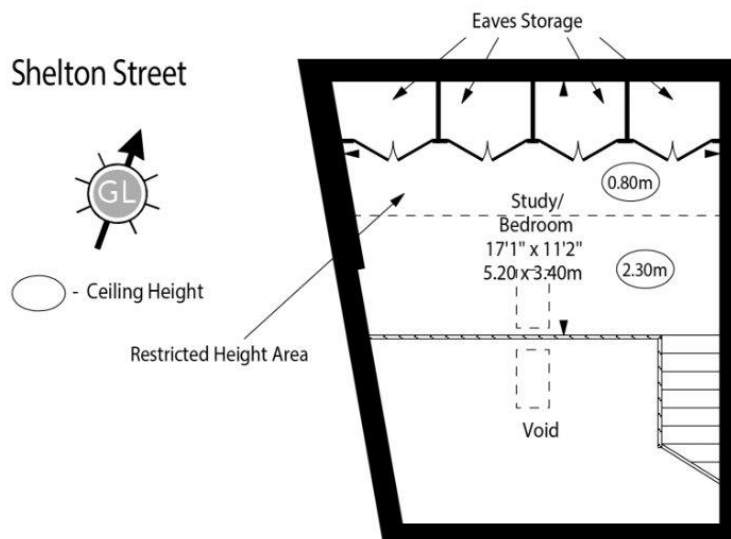
The spacious kitchen/dining room features sleek sage green cabinetry, exposed brick work, integrated appliances, and wooden flooring throughout.

Minimum Term:	1 months
Deposit Required:	£3,000.00
Local Authority:	London Borough Of Camden
Council Tax Band:	F
EPC Rating:	F
Furnished	

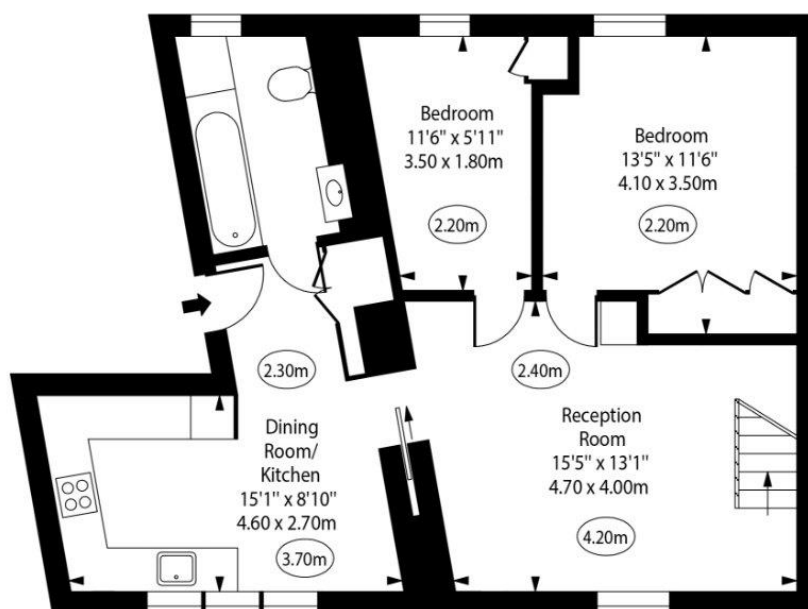
Chestertons Covent Garden Lettings

196 Shaftesbury Avenue
Covent Garden
London
WC2H 8JF
coventgardenlettingsusers@chestertons.co.uk
02030408400
chestertons.co.uk

Additional tenant charges apply (fees apply to non-AST tenancies only)
Tenancy Agreement Fee: £300
References per Tenant/Guarantor: £60
Inventory check (approx. £100 – £250 inc. VAT)
chestertons.co.uk/property-to-rent/applicable-fees



Fourth Floor



Third Floor

Approx Gross Internal Area 835 Sq Ft - 77.57 Sq M

Approx. Floor Area Including Restricted Heights 935 Sq Ft - 86.86 Sq M
(Including Eaves Storage)
(Excluding Void)

Every attempt has been made to ensure the accuracy of the floor plan shown.
However, all measurements, fixtures, fittings, and data shown are approximate interpretations and
for illustrative purposes only.

Measured according to the RICS IPMS 2. Not To Scale.

www.goldlens.co.uk

Ref. No. 0276760N

