



Dulverton Mansions

168 Gray's Inn Road, WC1X

£2,816.67 per month
(£650 per week)

Spacious one bedroom apartment found in this desirable mansion is flooded with natural light. Finished to a contemporary style whilst maintaining original features with wooden flooring and a separate kitchen.

CHESTERTONS



Dulverton Mansions

168 Gray's Inn Road, WC1X

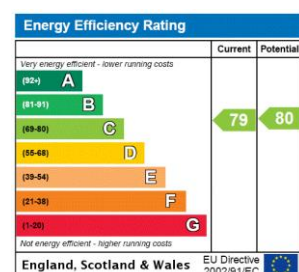
- wooden flooring throughout
- central location
- beautiful mansion building
- VIDEO VIEWING AVAILABLE



Exclusive to Chestertons - One bedroom apartment found in this desirable mansion block is flooded with natural light. Finished to a contemporary style whilst maintaining original features with wooden flooring and excellent ceiling height. Benefitting from ample storage and a separate fully fitted eat in kitchen. VIDEO VIEWING AVAILABLE

Available on a furnished basis and ideally located for Central and Piccadilly lines.

Minimum Term: 12 months
Deposit Required: £3,250.00
Local Authority: London Borough Of Camden
Council Tax Band: D
EPC Rating: C
Furnished

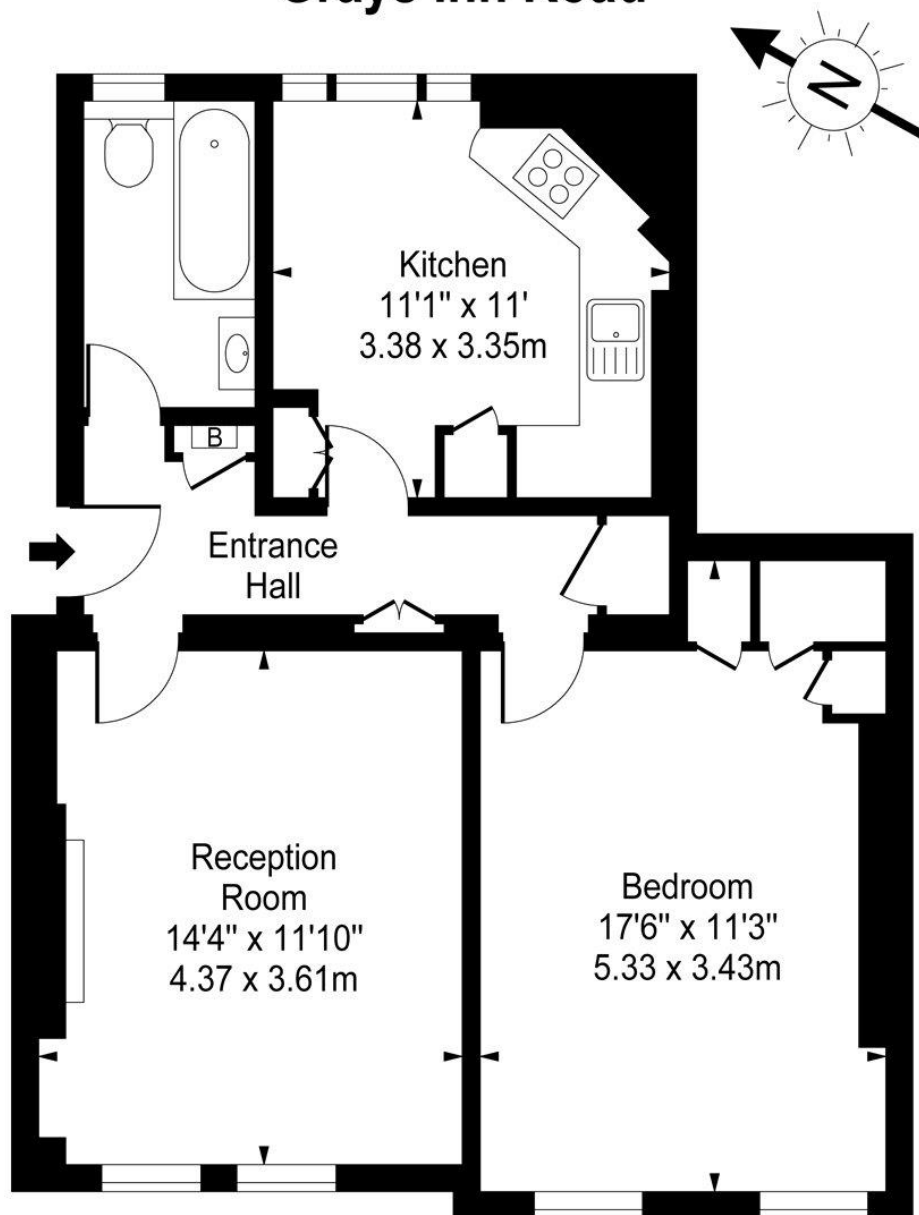


Chestertons Covent Garden Lettings

196 Shaftesbury Avenue
 Covent Garden
 London
 WC2H 8JF
 coventgardenlettingsusers@chestertons.co.uk
 02030408400
 chestertons.co.uk

Additional tenant charges apply (fees apply to non-AST tenancies only)
 Tenancy Agreement Fee: £300
 References per Tenant/Guarantor: £60
 Inventory check (approx. £100 – £250 inc. VAT)
 chestertons.co.uk/property-to-rent/applicable-fees

Dulverton Mansions, Grays Inn Road



Fourth Floor

Approx Gross Internal Area **588 Sq Ft - 54.63 Sq M**

For Illustration Purposes Only - Not To Scale

www.goldlens.co.uk

Ref. No. 009859J

