



Sovereign House

19-23 Fitzroy Street, W1T

£2,275 per month
(£525 per week)

Chestertons presents this smart one-bedroom apartment in the heart of London, laid across the third floor of Sovereign House, Fitzrovia, W1T.

CHESTERTONS

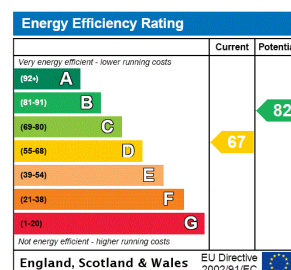


Sovereign House

19-23 Fitzroy Street, W1T

- Popular Fitzrovia development
- One bedroom apartment
- Semi-open plan kitchen
- Moments from Charlotte Street & Fitzroy Square Garden
- Easy access to Regent's Park
- Abundance of local shops, bars, cafes & restaurants nearby

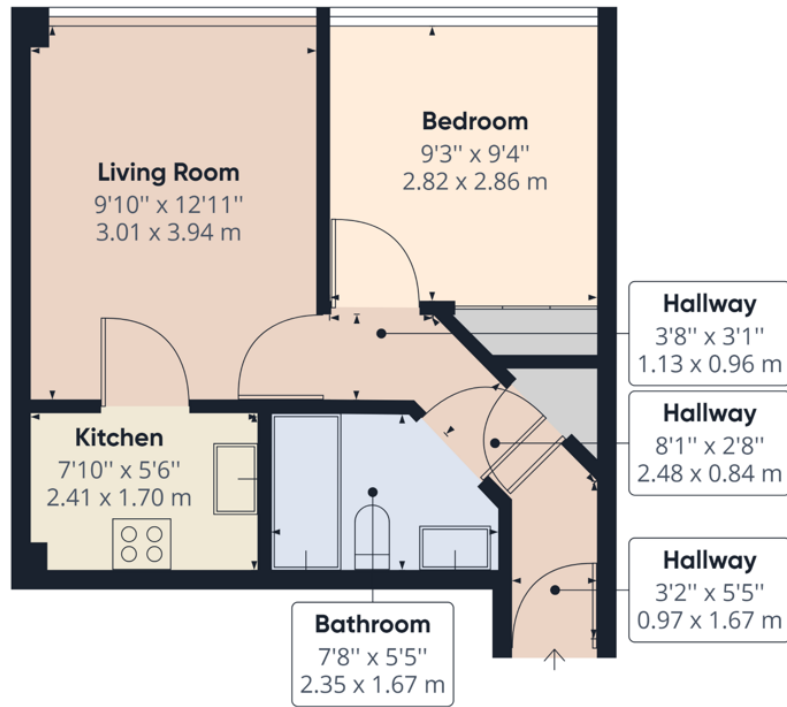
Minimum Term: 12 months
Deposit Required: £2,625.00
Local Authority: Camden
Council Tax Band: E
EPC Rating: D
Furnished



Chestertons Covent Garden Lettings

196 Shaftesbury Avenue
Covent Garden
London
WC2H 8JF
coventgardenlettingsusers@chestertons.co.uk
02030408400
chestertons.co.uk

Additional tenant charges apply (fees apply to non-AST tenancies only)
Tenancy Agreement Fee: £300
References per Tenant/Guarantor: £60
Inventory check (approx. £100 – £250 inc. VAT)
chestertons.co.uk/property-to-rent/applicable-fees



Approximate total area⁽¹⁾
364.56 ft²
33.87 m²

(1) Excluding balconies and terraces

While every attempt has been made to ensure accuracy, all measurements are approximate, not to scale. This floor plan is for illustrative purposes only.

GIRAFFE360

