



Northumberland Avenue

Charing Cross, WC2N

£9,966.67 per month
(£2,300 per week)

(SHORT LET) Truly exceptional 2 bedroom apartment, immaculately presented and found on the 1st floor of this exclusive development, located next to Victoria Embankment & Trafalgar Square. Offering a sprawling reception room, ideal for entertaining.



Northumberland Avenue

Charing Cross, WC2N

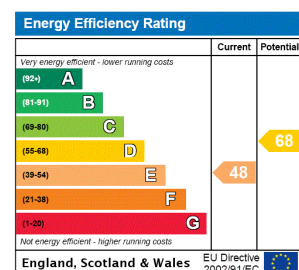
- Exceptional 3 Bedroom Apartment
- Charming Period Development
- First Floor
- Beautifully Appointed



(SHORT LET) A truly exceptional 2 bedroom apartment, immaculately presented and found on the 1st floor of this exclusive development, located next to Victoria Embankment & Trafalgar Square.

Offering a sprawling reception room with dining area, ideal for entertaining with a separate Kitchen. 2 double bedrooms, luxurious ensuite and guest bathroom, excellent storage and wooden flooring throughout & plenty of natural light.

Minimum Term: 1 months
Deposit Required: £4,600.00
Local Authority: Westminster
Council Tax Band: H
EPC Rating: E
Furnished

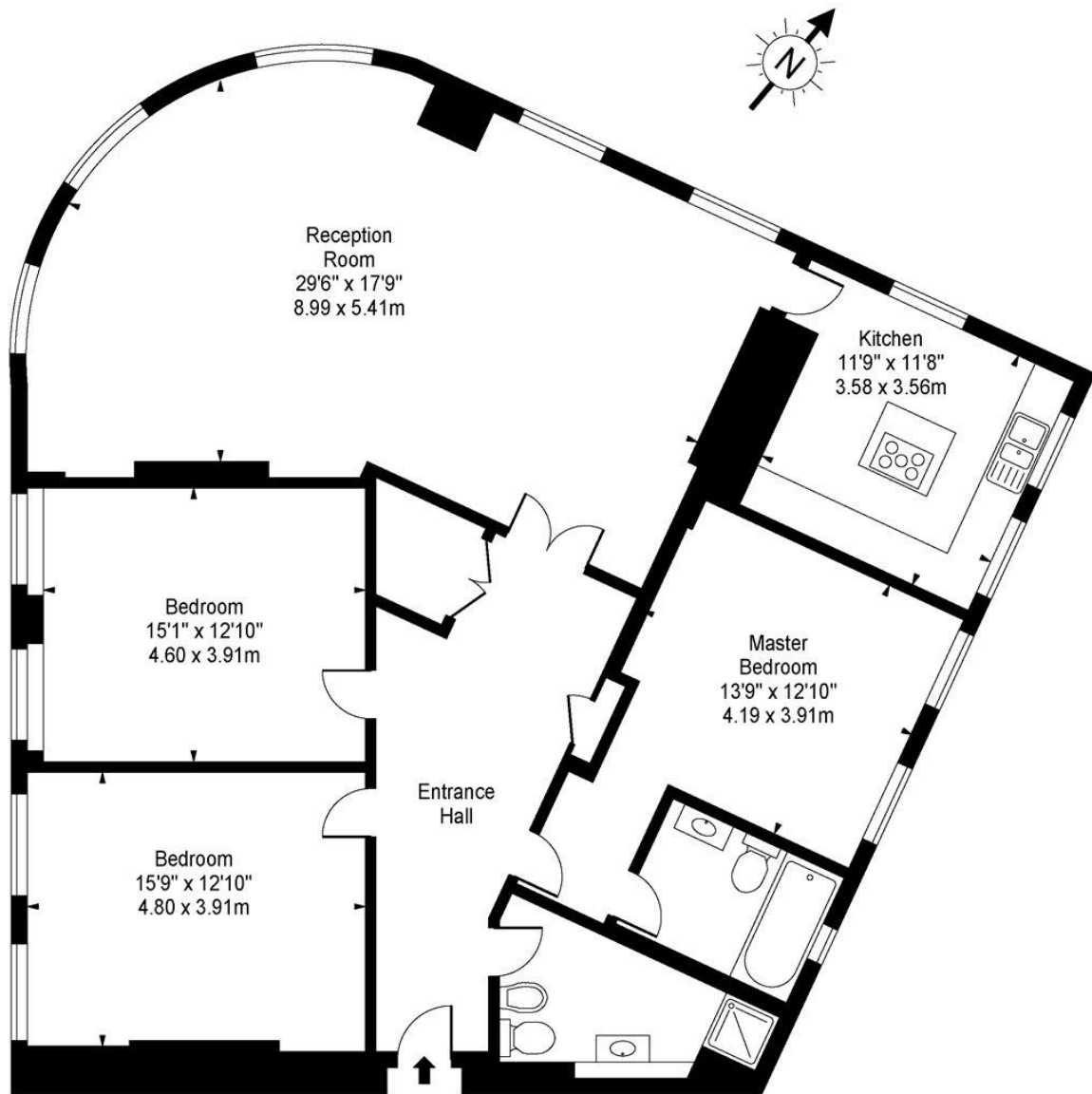


Chestertons Covent Garden Lettings

196 Shaftesbury Avenue
 Covent Garden
 London
 WC2H 8JF
coventgardenlettingsusers@chestertons.co.uk
 02030408400
chestertons.co.uk

Additional tenant charges apply (fees apply to non-AST tenancies only)
 Tenancy Agreement Fee: £300
 References per Tenant/Guarantor: £60
 Inventory check (approx. £100 – £250 inc. VAT)
chestertons.co.uk/property-to-rent/applicable-fees

Northumberland Avenue



Second Floor

Approx Gross Internal Area **1816 Sq Ft - 168.71Sq M**

For Illustration Purposes Only - Not To Scale

www.goldlens.co.uk

Ref. No. 004155A

