

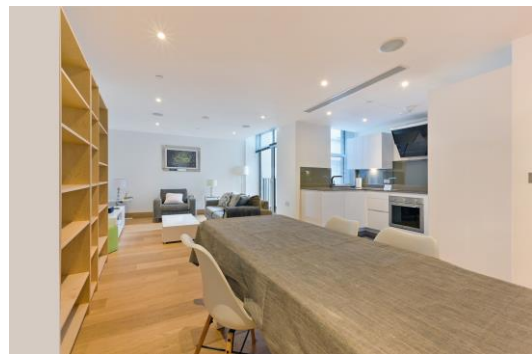


# Red Lion Court

City Of London, EC4A

£3,683.33 per month  
(£850 per week)

A stylish 2 bedroom apartment, in this desirable development with lift access and excellent access to the City & the West End. Impressive open plan living area, 2 double bedrooms with en-suites, solid wood flooring & air conditioning.



# Red Lion Court

City Of London, EC4A

- 2 double bedrooms
- lift access
- aircon
- wooden flooring



A stylish 2 bedroom apartment, in this desirable development with lift access and excellent access to the City & the West End. Impressive open plan living area, 2 double bedrooms with en-suites, solid wood flooring & air conditioning.

Close proximity to Thameslink and Chancery Lane stations.

**Minimum Term:** 12 months  
**Deposit Required:** £4,250.00  
**Local Authority:** City of London  
**Council Tax Band:** F  
**EPC Rating:** B  
**Furnished**

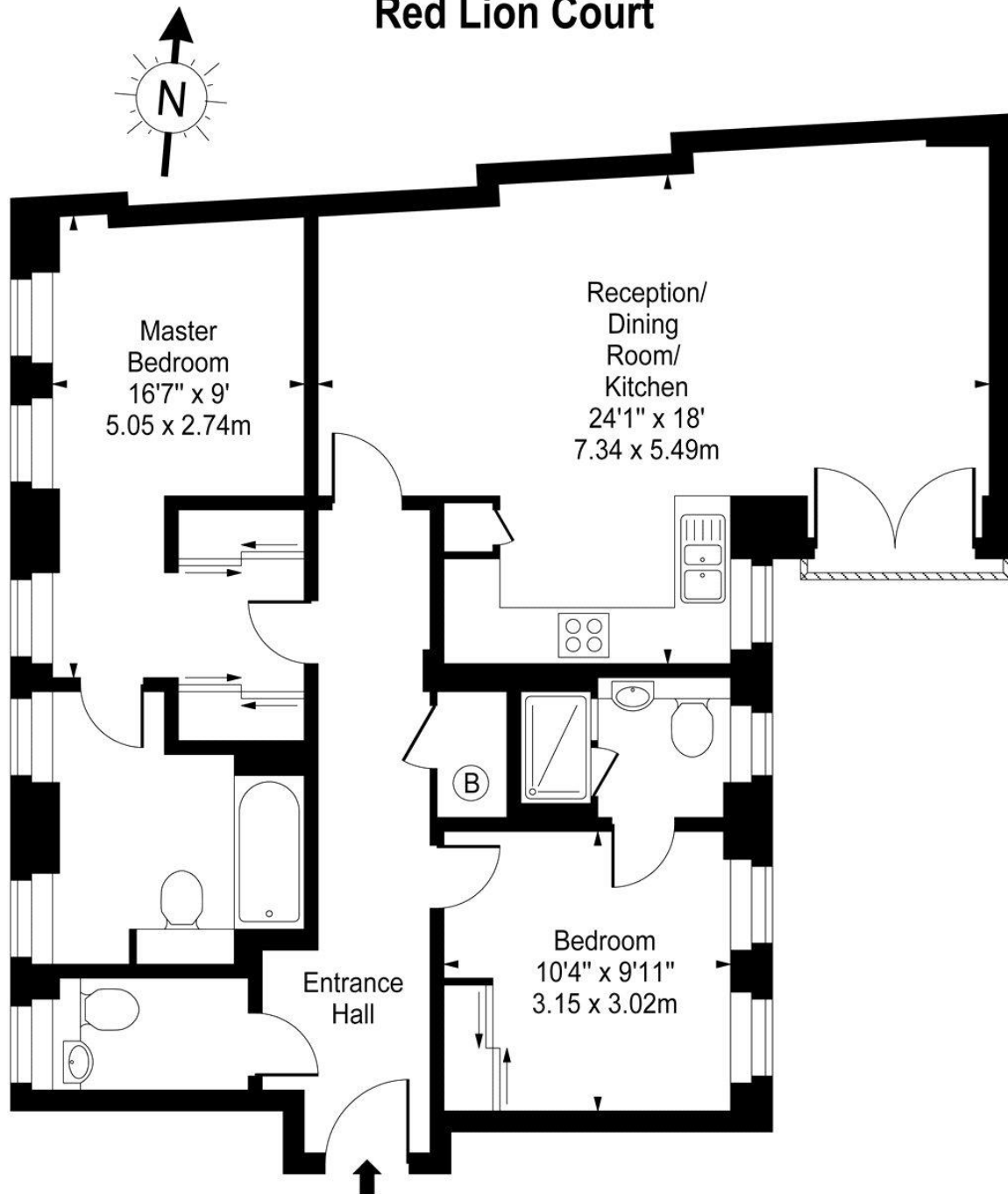
Energy Efficiency Rating		
	Current	Potential
Very energy efficient - lower running costs		
(94-100) <b>A</b>		
(81-93) <b>B</b>	86	86
(69-80) <b>C</b>		
(55-68) <b>D</b>		
(39-54) <b>E</b>		
(21-38) <b>F</b>		
(1-20) <b>G</b>		
Not energy efficient - higher running costs		
England, Scotland & Wales EU Directive 2002/91/EC		

### *Chestertons Covent Garden Lettings*

196 Shaftesbury Avenue  
 Covent Garden  
 London  
 WC2H 8JF  
 coventgardenlettingsusers@chestertons.co.uk  
 02030408400  
 chestertons.co.uk

Additional tenant charges apply (fees apply to non-AST tenancies only)  
 Tenancy Agreement Fee: £300  
 References per Tenant/Guarantor: £60  
 Inventory check (approx. £100 – £250 inc. VAT)  
 chestertons.co.uk/property-to-rent/applicable-fees

# Red Lion Court



Third Floor

Approx Gross Internal Area **915 Sq Ft - 85.00 Sq M**

For Illustration Purposes Only - Not To Scale

[www.goldlens.co.uk](http://www.goldlens.co.uk)

Ref. No. 00553

