



Torrington Square

London, WC1E

£3,500 per month
(£807.69 per week)

A spacious 2 bedroom boasting over 1173 sqft and with access to shared communal garden. Benefitting from a large reception room, two double bedrooms, kitchen with dining area, fitted bathroom and extra WC. Video viewing available.

CHESTERTONS



Torrington Square

London, WC1E

•



A spacious 2 bedroom boasting over 1173 sqft and with access to shared communal garden. Benefitting from a large reception room, two double bedrooms, kitchen with dining area, fitted bathroom and extra WC. Video viewing available.

Within close proximity to Russell Square station and Euston Square station, providing access to Piccadilly, Circle, Metropolitan, Hammersmith and City Lines.

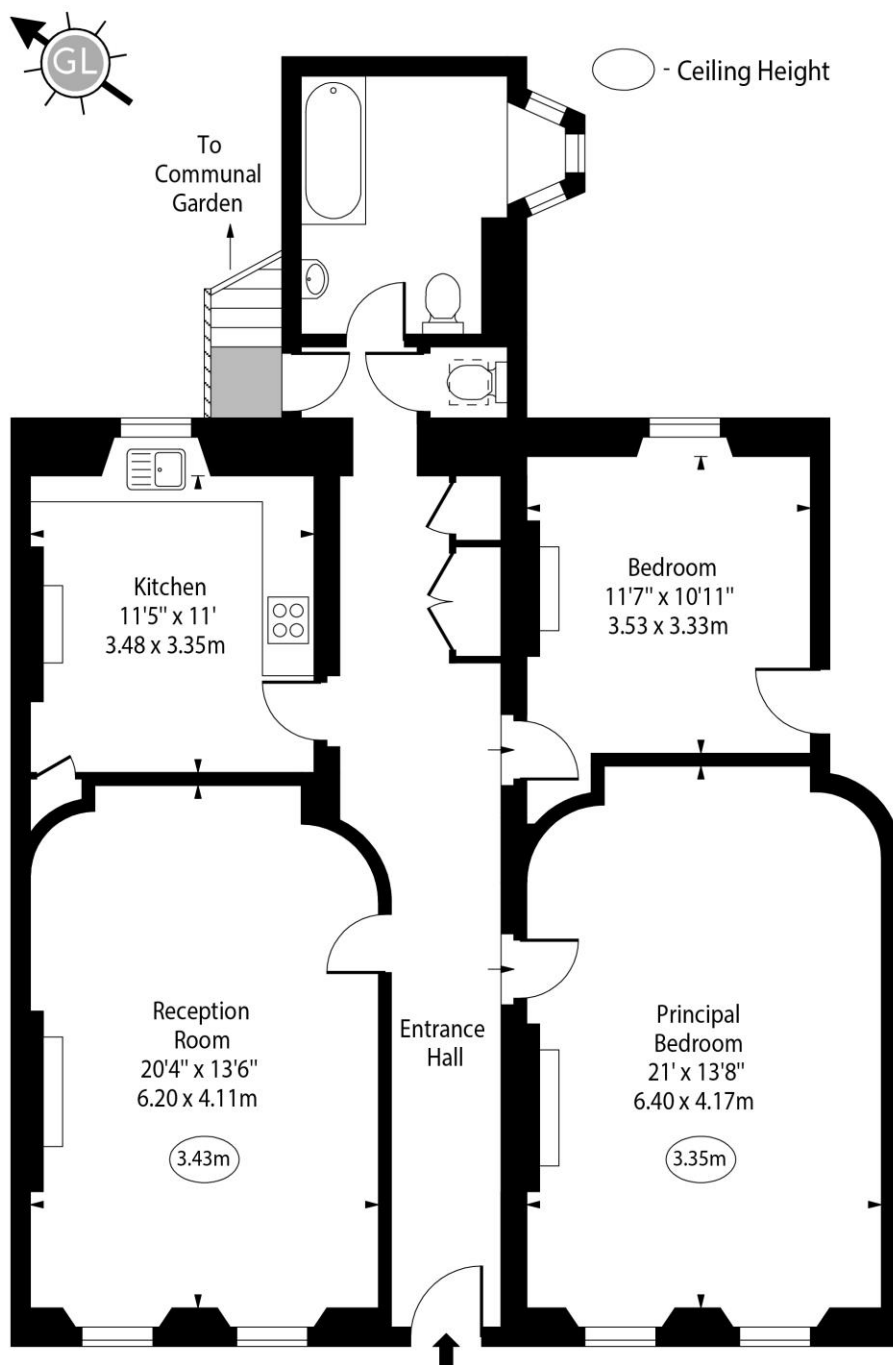
Minimum Term: 12 months
Deposit Required: £0.00
Local Authority: Camden
Council Tax Band: F
EPC Rating: D
Furnished

Chestertons Covent Garden Lettings

196 Shaftesbury Avenue
Covent Garden
London
WC2H 8JF
coventgarden@chestertons.co.uk
02030408400
chestertons.co.uk

Additional tenant charges apply (fees apply to non-AST tenancies only)
Tenancy Agreement Fee: £300
References per Tenant/Guarantor: £60
Inventory check (approx. £100 – £250 inc. VAT)
[chestertons.co.uk/property-to-rent/applicable-fees](https://www.chestertons.co.uk/property-to-rent/applicable-fees)

Torrington Square



Ground Floor

Approx Gross Internal Area 1190 Sq Ft - 110.55 Sq M

For Illustration Purposes Only - Not To Scale

www.goldlens.co.uk

Ref. No. 025791E

