

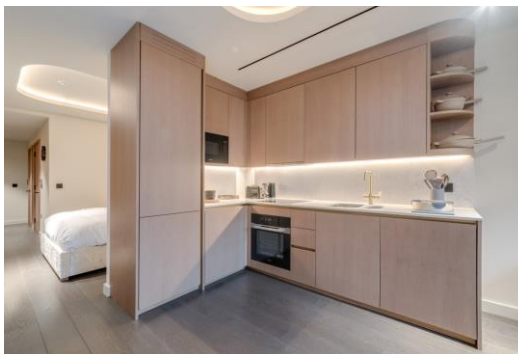


# Fareham Street

London, W1F

£3,878.33 per month  
(£895.00 per week)

This modern studio apartment is perfectly situated on Oxford Street, right in the heart of London's West End. The open-plan layout effortlessly combines the living area, dining space, and a stylish kitchen, creating a functional space.



# Fareham Street

London, W1F

•





This modern studio apartment is perfectly situated on Oxford Street, right in the heart of London's West End. The open-plan layout effortlessly combines the living area, dining space, and a stylish kitchen, creating a functional and inviting environment. High ceilings and expansive, insulated windows enhance the sense of space and fill the apartment with natural light.

The location is second to none, offering easy access to a wide range of amenities, including the vibrant restaurants, bars, and nightlife of Soho, along with the charm of Fitzrovia, Covent Garden, and Mayfair. Commuting is a breeze, with Oxford Circus station (Central, Victoria, and Bakerloo lines) and Tottenham Court Road station

**Minimum Term:** 12 months  
**Deposit Required:** £4,475.00  
**Local Authority:** City of Westminster  
**Council Tax Band:** E  
**EPC Rating:** B  
**Furnished**

Energy Efficiency Rating		
	Current	Potential
Very energy efficient - lower running costs		
(94-100) <b>A</b>		
(81-93) <b>B</b>	83	83
(69-80) <b>C</b>		
(55-68) <b>D</b>		
(39-54) <b>E</b>		
(21-38) <b>F</b>		
(1-20) <b>G</b>		
Not energy efficient - higher running costs		
England, Scotland & Wales EU Directive 2002/91/EC		

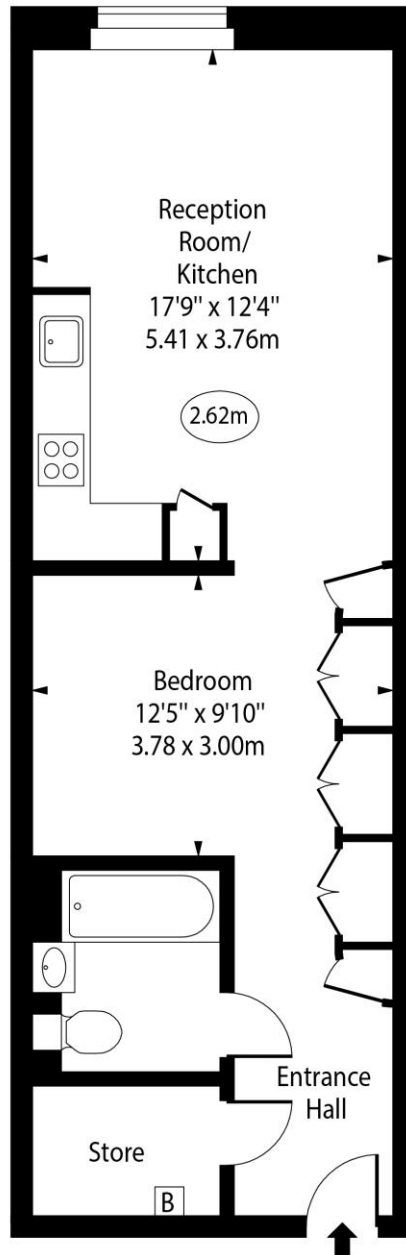
### Chestertons Covent Garden Lettings

196 Shaftesbury Avenue  
 Covent Garden  
 London  
 WC2H 8JF  
 coventgardenlettingsusers@chestertons.co.uk  
 02030408400  
 chestertons.co.uk

Additional tenant charges apply (fees apply to non-AST tenancies only)  
 Tenancy Agreement Fee: £300  
 References per Tenant/Guarantor: £60  
 Inventory check (approx. £100 – £250 inc. VAT)  
 chestertons.co.uk/property-to-rent/applicable-fees

## Fareham Street

○ - Ceiling Height



Second Floor

Approx Gross Internal Area      507 Sq Ft - 47.10 Sq M

For Illustration Purposes Only - Not To Scale

[www.goldlens.co.uk](http://www.goldlens.co.uk)

Ref. No. 026614K

