



Fareham Street

London, W1F

£7,995 per month
(£1,845 per week)

This elegant three-bedroom apartment is ideally situated in the vibrant heart of Oxford Street. The open-concept design effortlessly connects the living room, dining area, and fully-equipped kitchen. A sophisticated mix of wooden flooring & carpet.

CHESTERTONS



Fareham Street

London, W1F

•

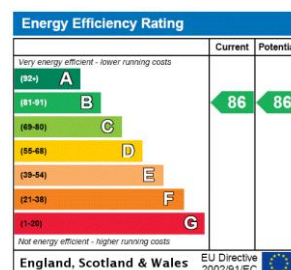


This elegant three-bedroom apartment is ideally situated in the vibrant heart of Oxford Street. The open-concept design effortlessly connects the living room, dining area, and fully-equipped kitchen. A sophisticated mix of wooden flooring and soft carpeting strikes the perfect balance between comfort and luxury.

The apartment boasts high ceilings and expansive, insulated windows that flood the space with natural light, enhancing its airy and refined atmosphere.

TCRW SOHO sets a new benchmark for luxury living in the heart of London's West End. Ideally located just moments from world-

Minimum Term: 12 months
Deposit Required: £11,070.00
Local Authority: City of Westminster
Council Tax Band: G
EPC Rating: To be confirmed
Furnished



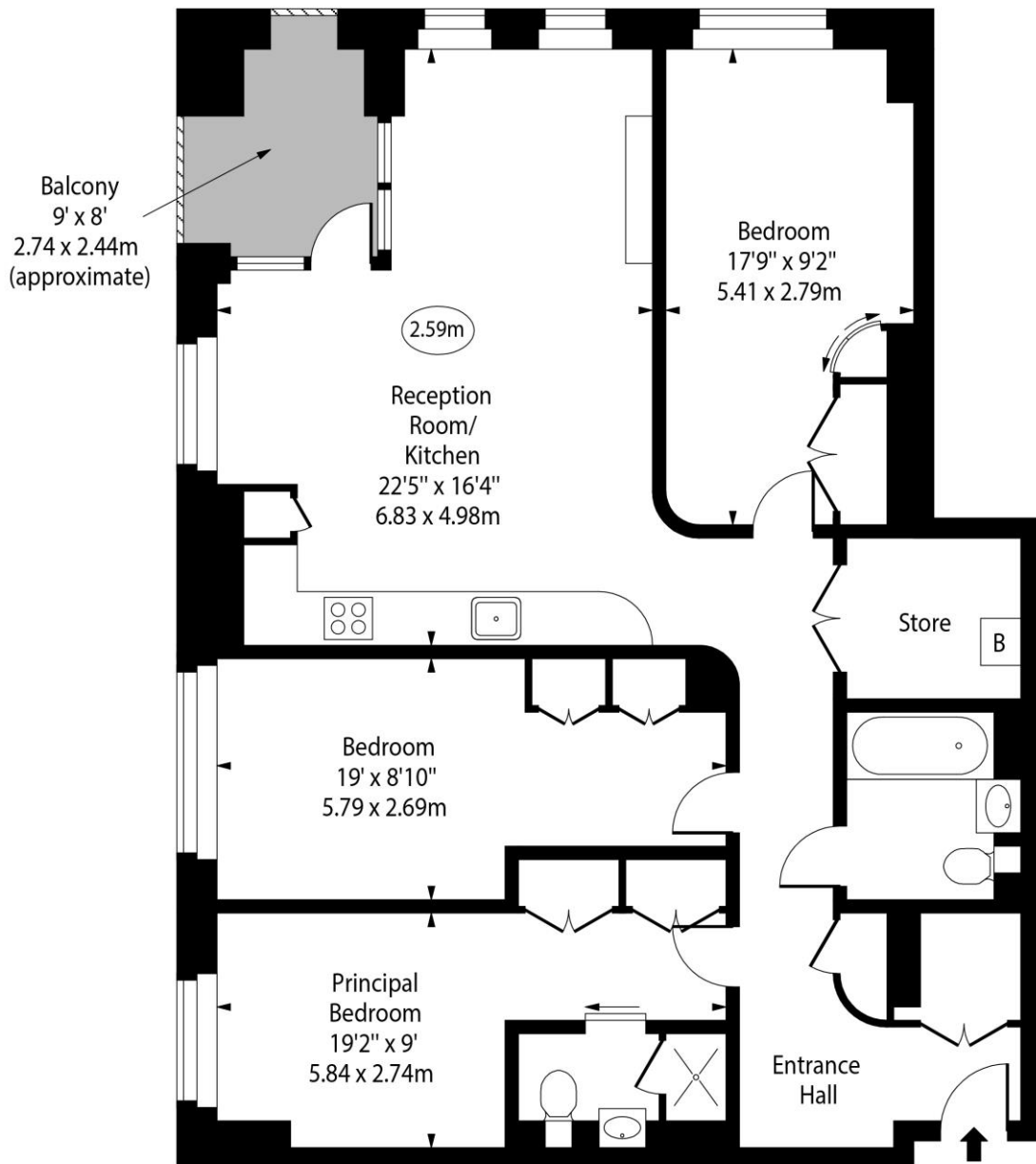
Chestertons Covent Garden Lettings

196 Shaftesbury Avenue
 Covent Garden
 London
 WC2H 8JF
 coventgardenlettingsusers@chestertons.co.uk
 02030408400
 chestertons.co.uk

Additional tenant charges apply (fees apply to non-AST tenancies only)
 Tenancy Agreement Fee: £300
 References per Tenant/Guarantor: £60
 Inventory check (approx. £100 – £250 inc. VAT)
 chestertons.co.uk/property-to-rent/applicable-fees

Fareham Street

○ - Ceiling Height



Second Floor

Approx Gross Internal Area 1092 Sq Ft - 101.45 Sq M

For Illustration Purposes Only - Not To Scale

www.goldlens.co.uk

Ref. No. 026613K

Chesterton UK Services Limited trading as Chestertons for themselves and for the vendor of this property whose agents they are, give notice that (i) these particulars do not constitute any part of an offer or contract, (ii) all statements contained within these particulars are made without responsibility on the part of Chestertons or the vendor, (iii) whilst made in good faith, none of the statements contained within these particulars are to be relied upon as a statement or representation of fact, (iv) any intending purchasers must satisfy themselves by inspection or otherwise as to the correctness of each of the statements contained within these particulars, (v) the vendor does not make or give either Chestertons or any person in their employment any authority to make or give representation or warranty whatsoever in relation to this property. Wide angle lenses may be used. ©Copyright Chestertons | Chesterton Global Ltd | Registered Office 40 Connaught Street, Hyde Park, London W2 2AB Registered Company Number 05334580.



This paper is
100% recyclable