



Hatton Place

Clerkenwell, EC1N

£3,500 per month
(£807.69 per week)

EXCLUSIVE TO CHESTERTONS is this bright 2nd floor lateral apartment boasting a large balcony, modern finish throughout found on a quiet mews convenient for Farringdon station.



Hatton Place

Clerkenwell, EC1N

- Modern finish throughout
- Quiet mews location
- Balcony
- Boasting over 750ft² of living space



A bright 2nd floor apartment (with lift) found within a warehouse style conversion, offering a large open plan reception/kitchen with dining area, balcony, 2 bedrooms, 2 bathrooms and wooden flooring in the reception.

Furniture is computer generated imagery to offer perception on size of rooms, furniture shown does not come with the apartment nor is it offered.

Minimum Term: 12 months
Deposit Required: £4,038.46
Local Authority: London Borough Of Camden
Council Tax Band: F
EPC Rating: B
Unfurnished

Energy Efficiency Rating		
	Current	Potential
Very energy efficient - lower running costs		
A (94-100)		
B (81-93)	83	83
C (69-80)		
D (55-68)		
E (39-54)		
F (21-38)		
G (1-20)		
Not energy efficient - higher running costs		
England, Scotland & Wales EU Directive 2002/91/EC		

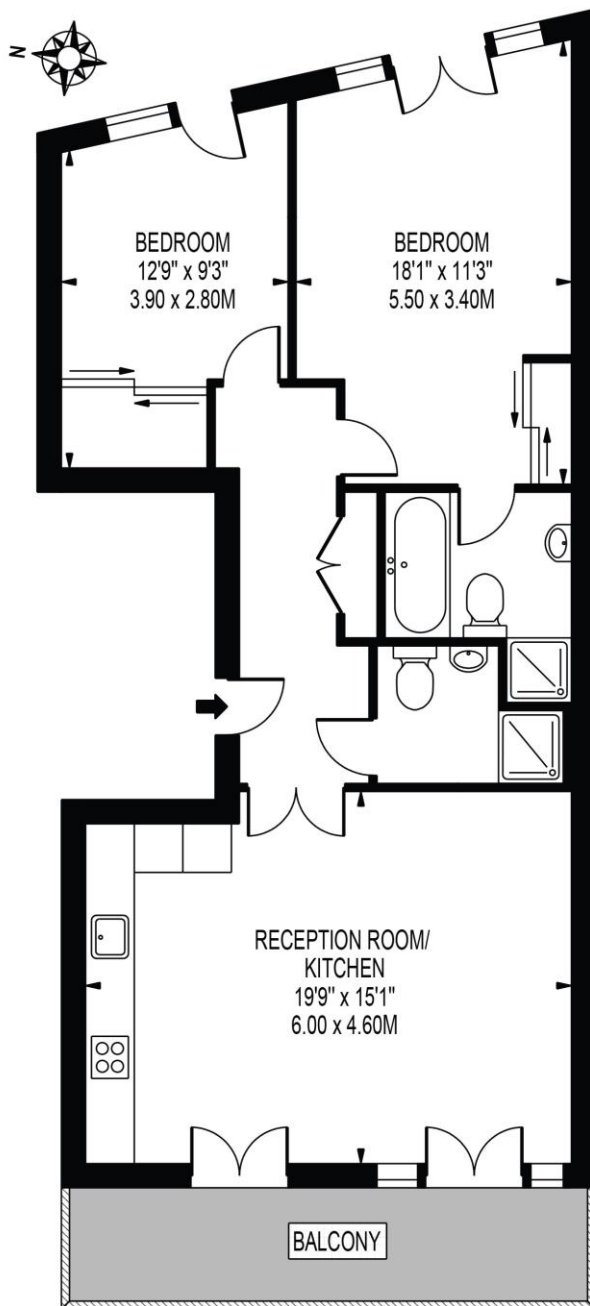
Chestertons Covent Garden Lettings

196 Shaftesbury Avenue
 Covent Garden
 London
 WC2H 8JF
 coventgardenlettingsusers@chestertons.co.uk
 02030408400
 chestertons.co.uk

Additional tenant charges apply (fees apply to non-AST tenancies only)
 Tenancy Agreement Fee: £300
 References per Tenant/Guarantor: £60
 Inventory check (approx. £100 – £250 inc. VAT)
 chestertons.co.uk/property-to-rent/applicable-fees

HATTON PLACE

APPROXIMATE GROSS INTERNAL FLOOR AREA: 777 SQ FT - 72.22 SQ M



SECOND FLOOR

FOR ILLUSTRATION PURPOSES ONLY

THIS FLOOR PLAN SHOULD BE USED AS A GENERAL OUTLINE FOR GUIDANCE ONLY AND DOES NOT CONSTITUTE IN WHOLE OR IN PART AN OFFER OR CONTRACT.
ANY INTENDING PURCHASER OR LESSEE SHOULD SATISFY THEMSELVES BY INSPECTION, SEARCHES, ENQUIRIES AND FULL SURVEY AS TO THE CORRECTNESS OF EACH STATEMENT.
ANY AREAS, MEASUREMENTS OR DISTANCES QUOTED ARE APPROXIMATE AND SHOULD NOT BE USED TO VALUE A PROPERTY OR BE THE BASIS OF ANY SALE OR LET.

