



Richardsons Mews

London, W1T

£8,991.67 per month
(£2,075 per week)

This charming three-bedroom mews house provides a generous living space in central London, showcased to an exceptional standard. Boasting a high-quality interior, the house is nestled in a tranquil and secluded cobbled mews.



Richardsons Mews

London, W1T

-

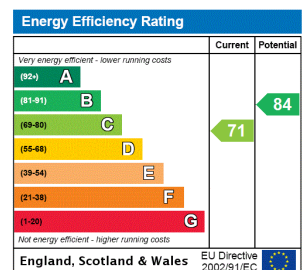


This charming three-bedroom mews house provides a generous living space in central London, showcased to an exceptional standard.

Boasting a high-quality interior, the house is nestled in a tranquil and secluded cobbled mews, conveniently located near Tottenham Court Road and Portland Place.

The property is filled with an abundance of natural light and is spread across four levels. It features a delightful reception room, a modern eat-in kitchen that opens to a private terrace garden, a separate utility room, a magnificent principal bedroom with an en-

Minimum Term: 12 months
Deposit Required: £12,450.00
Local Authority: Camden
Council Tax Band: G
EPC Rating: C
Part Furnished, Unfurnished



Chestertons Covent Garden Lettings

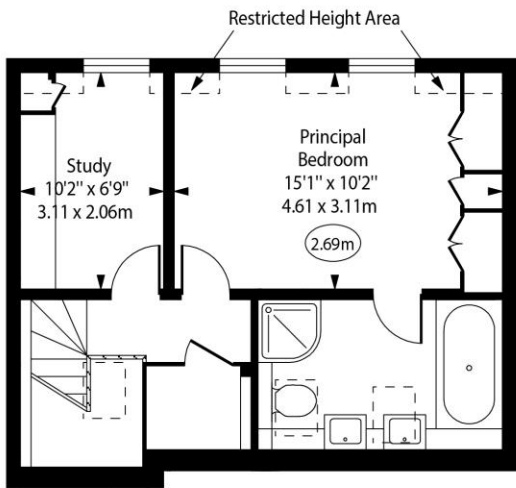
196 Shaftesbury Avenue
 Covent Garden
 London
 WC2H 8JF
 coventgarden@chestertons.co.uk
 02030408400
 chestertons.co.uk

Additional tenant charges apply (fees apply to non-AST tenancies only)
 Tenancy Agreement Fee: £300
 References per Tenant/Guarantor: £60
 Inventory check (approx. £100 – £250 inc. VAT)
chestertons.co.uk/property-to-rent/applicable-fees

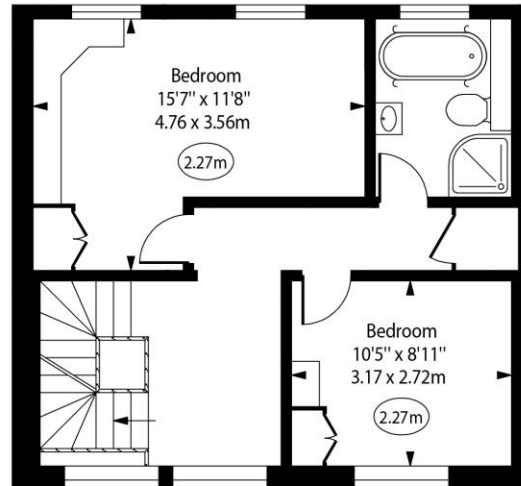
Richardsons Mews



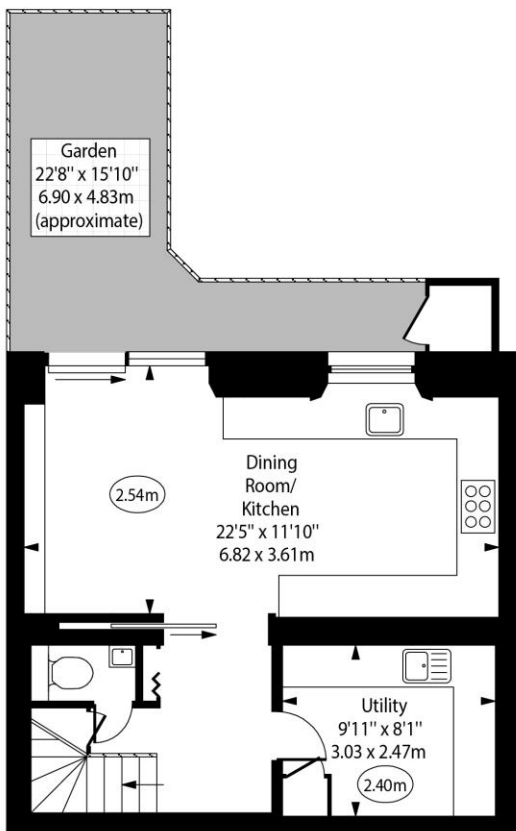
○ - Ceiling Height



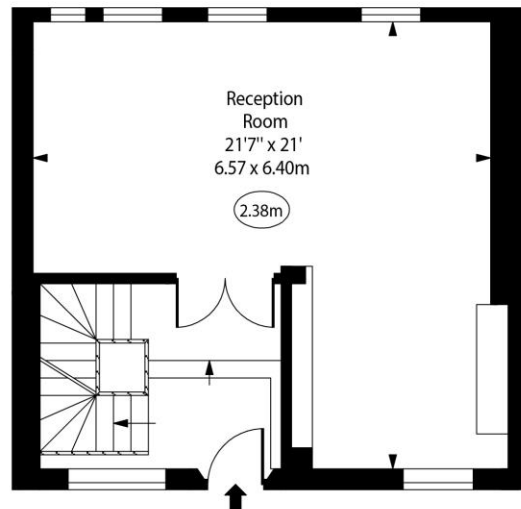
Second Floor



First Floor



Lower Ground Floor



Ground Floor

Approx Gross Internal Area 1783 Sq Ft - 165.64 Sq M

Approx. Floor Area Including Restricted Heights 1800 Sq Ft - 167.22 Sq M

For Illustration Purposes Only - Not To Scale

www.goldlens.co.uk

Ref. No. 025865R

