



Gower Street

Bloomsbury, WC1E

£3,141.67 per month
(£725 per week)

Boasting over 750 sq ft of living space is this 3rd floor 2 bedroom apartment with a small balcony off the reception. Located within Bloomsbury and apart of the Bedford Estates property portfolio with access available for Bedford Sq.



Gower Street

Bloomsbury, WC1E

- *NO TENANT FEES*
- Bright 2 bedroom apartment
- Separate kitchen
- Close to Tottenham Ct Road tube

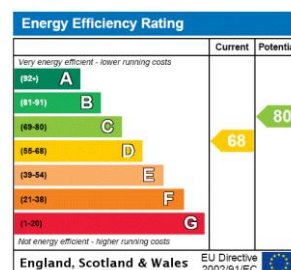


Boasting over 750 sq ft of living space is this 3rd floor 2 bedroom apartment with a small balcony off the reception. Located within Bloomsbury and apart of the Bedford Estates property portfolio with access available for Bedford Square.

Conveniently located for both Tottenham Court Road and Warren Street tube stations, providing access to Northern, Victoria and Central lines. Available un/furnished.

Vehicle parking permits are not available or allowed by the council.

Minimum Term: months
Deposit Required: £3,625.00
Local Authority: London Borough Of Camden
Council Tax Band: E
EPC Rating: D
Furnished, Unfurnished



Chestertons Covent Garden Lettings

196 Shaftesbury Avenue
 Covent Garden
 London
 WC2H 8JF
 coventgarden@chestertons.co.uk
 02030408400
 chestertons.co.uk

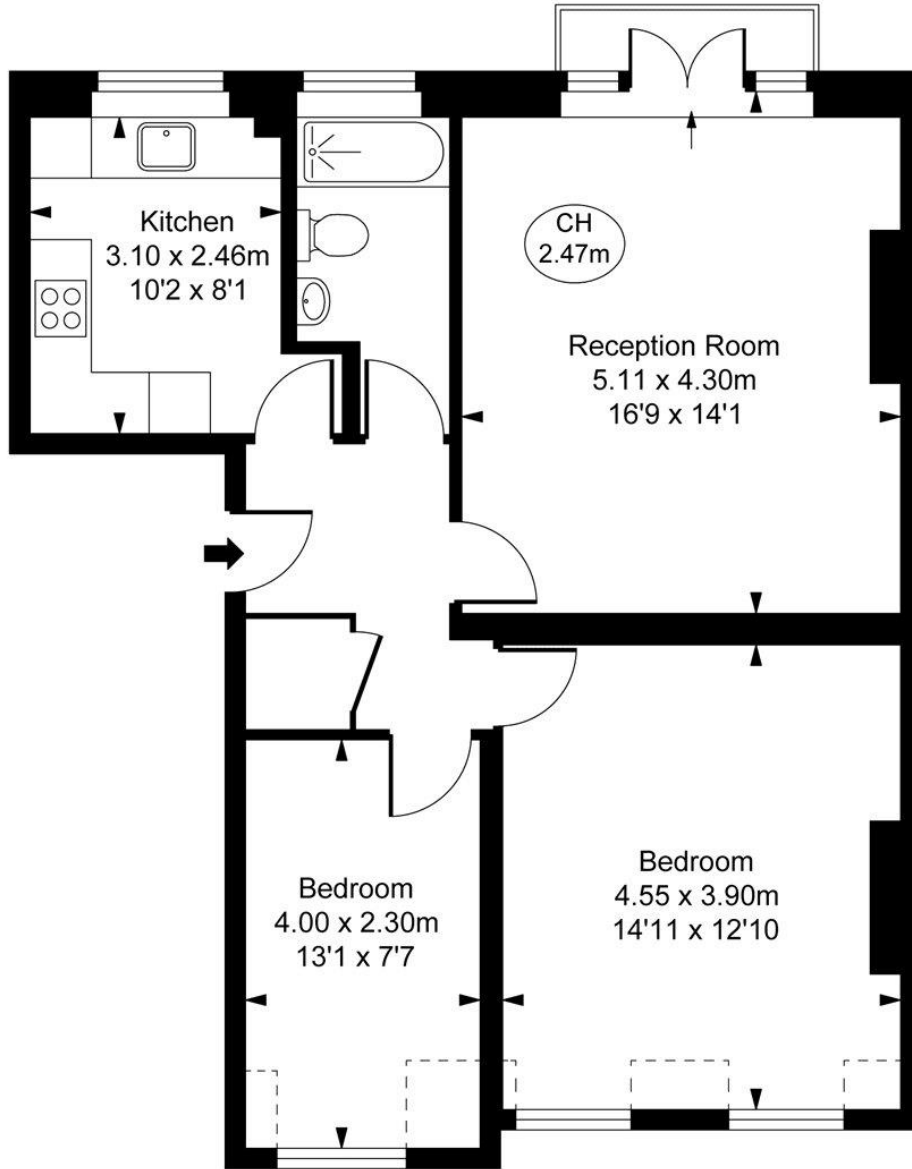
Additional tenant charges apply (fees apply to non-AST tenancies only)
 Tenancy Agreement Fee: £300
 References per Tenant/Guarantor: £60
 Inventory check (approx. £100 – £250 inc. VAT)
 chestertons.co.uk/property-to-rent/applicable-fees

Gower Street, WC1E
Approximate Gross Internal Area
70.44 sq m / 758 sq ft



(Including restricted height
under 1.5m [-----])

(CH = Ceiling Heights)



Third Floor

This plan is not to scale. It is for guidance and not for valuation purposes.
All measurements and areas are approximate only, and have been prepared in accordance with the current edition of the RICS Code of Measuring Practice.
© Fulham Performance

