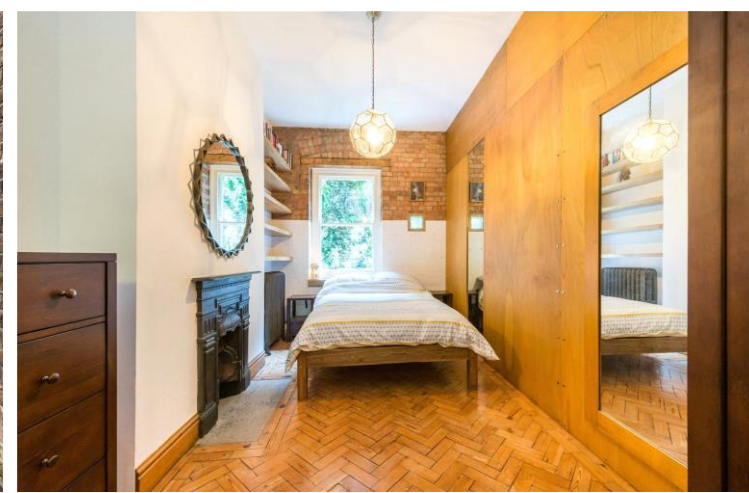




Bristol House  
Southampton Row, WC1B

CHESTERTONS









A stylish apartment set in desirable mansion block located only moments from Bloomsbury Square. The property benefits from exposed brickwork, beautiful parquet flooring and access to a private patio. All bills included for short term lets.

- Short Let - all bills included
- Exposed brickwork
- Parquet flooring
- Private patio garden
- Excellent location

**£950 per week (£4,116.67 pcm)**

Additional tenant charges apply (fees apply to non-AST tenancies only)

Tenancy Agreement Fee: £300

References per Tenant/Guarantor: £60

Inventory check (approx. £100 – £250 inc. VAT)

[chestertons.com/property-to-rent/applicable-fees](http://chestertons.com/property-to-rent/applicable-fees)

Energy Efficiency Rating		Current	Potential
95-100	A		
81-94	B		
69-80	C		
55-68	D	68	69
39-54	E		
21-38	F		
1-20	G		

Not energy efficient - higher running costs

England, Scotland & Wales EU Directive 2002/91/EC

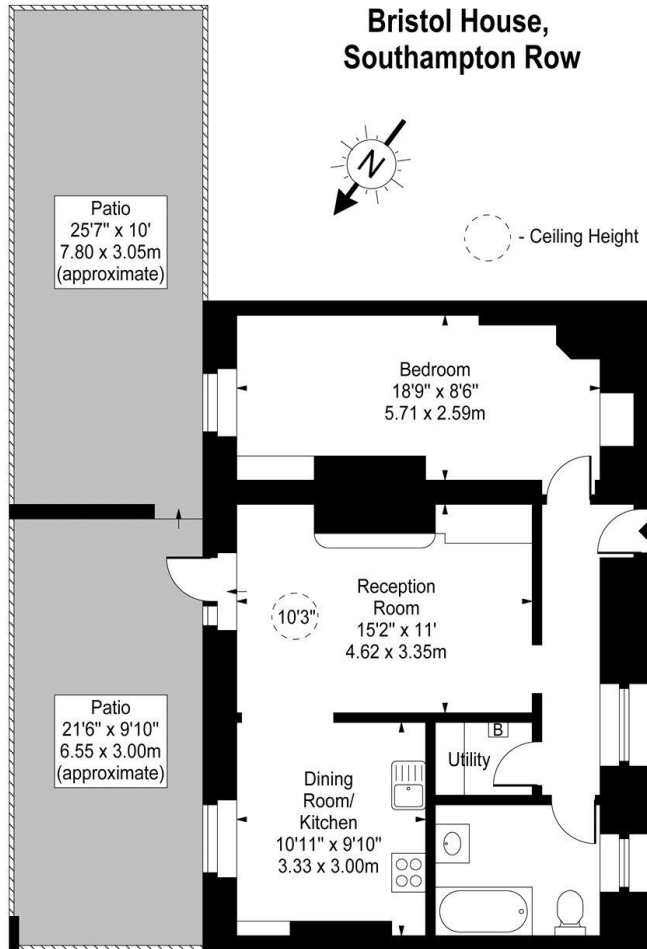
**Minimum Term:** months  
**Deposit Required:** £0.00  
**Local Authority:**  
**Council Tax Band:**  
**EPC Rating:** D  
**Furnished**

*Chestertons Covent Garden Lettings*  
 196 Shaftesbury Avenue  
 Covent Garden  
 London  
 WC2H 8JF  
[lettings.coventgarden@chestertons.com](mailto:lettings.coventgarden@chestertons.com)  
 02030408400

# Bristol House, Southampton Row



 - Ceiling Height



Lower Ground Floor

Approx Gross Internal Area **608 Sq Ft - 56.48 Sq M**

For Illustration Purposes Only - Not To Scale

[www.goldlens.co.uk](http://www.goldlens.co.uk)

Ref. No. 009689M

Chesterton Global Ltd trading as Chestertons for themselves and for the vendor of this property whose agents they are, give notice that (i) these particulars do not constitute any part of an offer or contract, (ii) all statements contained within these particulars are made without responsibility on the part of Chestertons or the vendor, (iii) whilst made in good faith, none of the statements contained within these particulars are to be relied upon as a statement or representation of fact, (iv) any intending purchasers must satisfy themselves by inspection or otherwise as to the correctness of each of the statements contained within these particulars, (v) the vendor does not make or give either Chestertons or any person in their employment any authority to make or give representation or warranty whatsoever in relation to this property. Wide angle lenses may be used. ©Copyright Chestertons | Chesterton Global Ltd | Registered Office 40 Connaught Street, Hyde Park, London W2 2AB Registered Company Number 05334580.



This paper is  
100% recyclable