



Gower Mews

Bloomsbury, WC1E

£4,311.67 per month
(£995 per week)

Bright maisonette found in a quiet mews boasts over 1200sqft of space. The apartment benefits from a large open plan living space & ample built in storage. Convenient for central & northern lines.

CHESTERTONS



Gower Mews

Bloomsbury, WC1E

- Split Level apartment
- Wooden flooring
- Convenient for the central & northern lines
- Close to the area's Universities for students and academics

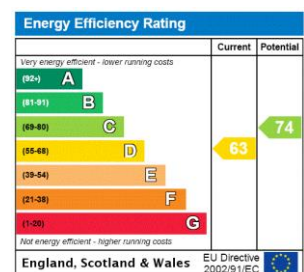


Bright maisonette found in a quiet mews boasts over 1200sqft of space.

The apartment benefits from a large open plan living space & ample built in storage, 2 double bedrooms, en-suite bathroom, shower room and a utility room with guest WC. Finished to a high specification throughout the property is available furnished or unfurnished.

Convenient for Tottenham Court Road & Goodge Street tube stations.

Minimum Term: months
Deposit Required: £4,975.00
Local Authority: London Borough Of Camden
Council Tax Band: F
EPC Rating: D
Furnished, Part Furnished, Unfurnished

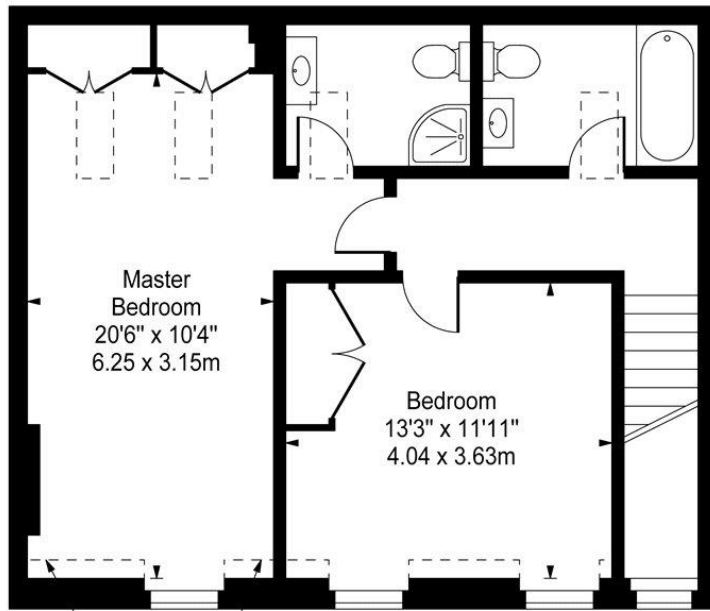


Chestertons Covent Garden Lettings

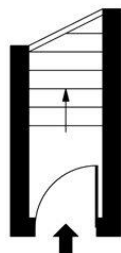
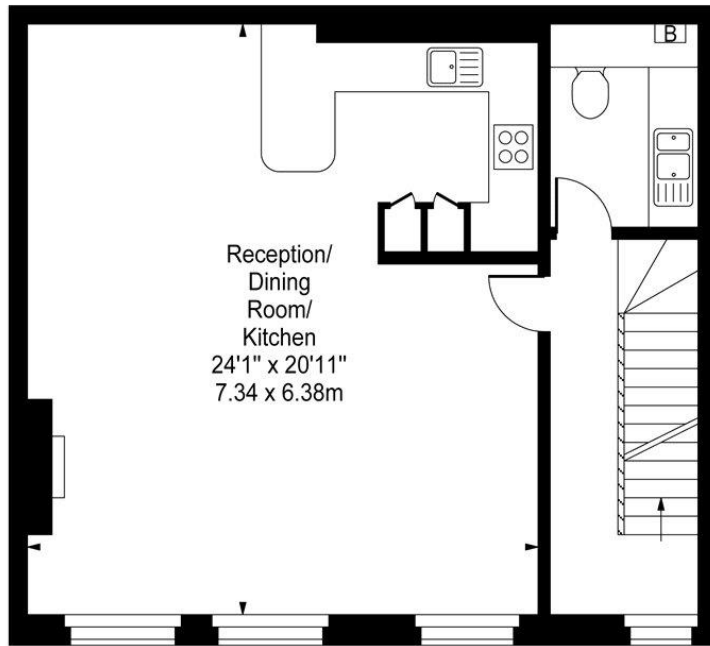
196 Shaftesbury Avenue
 Covent Garden
 London
 WC2H 8JF
 coventgarden@chestertons.co.uk
 02030408400
 chestertons.co.uk

Additional tenant charges apply (fees apply to non-AST tenancies only)
 Tenancy Agreement Fee: £300
 References per Tenant/Guarantor: £60
 Inventory check (approx. £100 – £250 inc. VAT)
chestertons.co.uk/property-to-rent/applicable-fees

Gower Mews



Restricted Height Area Second Floor



Ground Floor
Entrance

First Floor

Approx Gross Internal Area 1295 Sq Ft - 120.31 Sq M
(Including Restricted Height Area)

For Illustration Purposes Only - Not To Scale

www.goldlens.co.uk

Ref. No. 005548J

