



Ridgmount Gardens

London, WC1E

£5,611.67 per month
(£1,295 per week)

NO HMO. Maximum 2 households (2 sharers or family).

A completely refurbished 3/4 bedroom apartment on the 3rd floor of the ever popular and handsome development Ridgmount Gardens.



Ridgmount Gardens

London, WC1E

-



Minimum Term: 12 months
Deposit Required: £0.00
Local Authority: Camden
Council Tax Band: G
EPC Rating: D
Furnished, Part Furnished, Unfurnished

Energy Efficiency Rating		Current	Potential
Very energy efficient - lower running costs	A		
(92-100)	B		
(81-91)	C		
(69-80)	D	58	80
(55-68)	E		
(39-54)	F		
(21-38)	G		
Not energy efficient - higher running costs			
(1-20)			

England, Scotland & Wales EU Directive 2002/91/EC

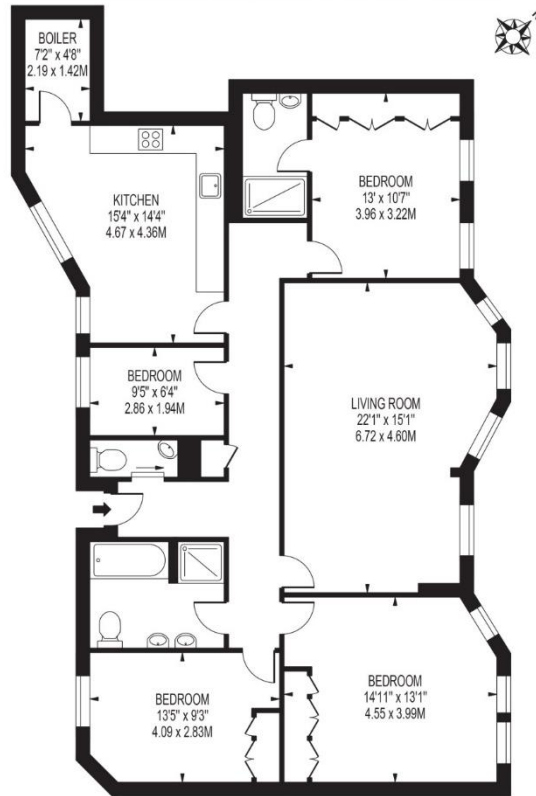
Chestertons Covent Garden Lettings

196 Shaftesbury Avenue
Covent Garden
London
WC2H 8JF
coventgarden@chestertons.co.uk
02030408400
chestertons.co.uk

Additional tenant charges apply (fees apply to non-AST tenancies only)
Tenancy Agreement Fee: £300
References per Tenant/Guarantor: £60
Inventory check (approx. £100 – £250 inc. VAT)
chestertons.co.uk/property-to-rent/applicable-fees

RIDGMOUNT GARDENS

APPROXIMATE GROSS INTERNAL FLOOR AREA: 1368 SQ FT - 127.08 SQ M



FOR ILLUSTRATION PURPOSES ONLY

THIS FLOOR PLAN SHOULD BE USED AS A GENERAL OUTLINE FOR GUIDANCE ONLY AND DOES NOT CONSTITUTE IN WHOLE OR IN PART AN OFFER OR CONTRACT. ANY INTENDING PURCHASERS OR LESSEES SHOULD SATISFY THEMSELVES BY INSPECTION, SEARCHES, ENQUIRIES AND FULL SURVEY AS TO THE CORRECTNESS OF EACH STATEMENT. ANY AREAS, MEASUREMENTS OR DISTANCES QUOTED ARE APPROXIMATE AND SHOULD NOT BE USED TO VALUE A PROPERTY OR BE THE BASIS OF ANY SALE OR LET.

Chesterton Global Ltd trading as Chestertons for themselves and for the vendor of this property whose agents they are, give notice that (i) these particulars do not constitute any part of an offer or contract, (ii) all statements contained within these particulars are made without responsibility on the part of Chestertons or the vendor, (iii) whilst made in good faith, none of the statements contained within these particulars are to be relied upon as a statement or representation of fact, (iv) any intending purchasers must satisfy themselves by inspection or otherwise as to the correctness of each of the statements contained within these particulars, (v) the vendor does not make or give either Chestertons or any person in their employment any authority to make or give representation or warranty whatsoever in relation to this property. Wide angle lenses may be used. ©Copyright Chestertons | Chesterton Global Ltd | Registered Office 40 Connaught Street, Hyde Park, London W2 2AB Registered Company Number 05334580.



This paper is 100% recyclable