



# Dean Street

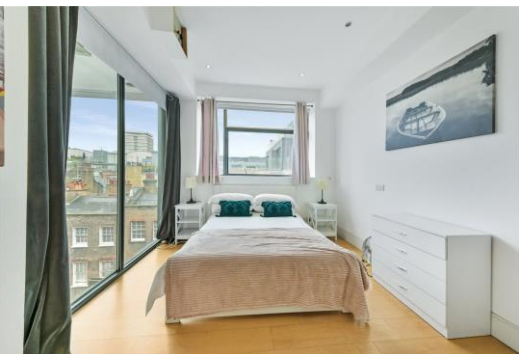
## London, W1D

£8,000 per month  
(£1,846.15 per week)

(SHORT LET) Chestertons is proud to offer this split level apartment in Soho. The apartment has three bedrooms, two bathrooms and is on the third and fourth floors. Spanning over 1294 sqft of living space and benefiting from a private terrace.

**CHESTERTONS**





# Dean Street

London, W1D

•

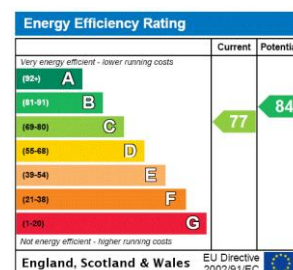


(SHORT LET -2 months maximum stay. All bills included.)  
Chestertons is proud to offer this three bedroom split level apartment in Soho.

The apartment has three bedrooms, two bathrooms and is on the third and fourth floors.

Spanning over 1294 sqft of living space and benefiting from a private terrace, those living here will find ample space, with a huge living area/open plan kitchen, three good size bedrooms and two well sized bathrooms.

**Minimum Term:** 1 months  
**Deposit Required:** £11,076.92  
**Local Authority:** City of Westminster  
**Council Tax Band:** H  
**EPC Rating:** C  
**Furnished**



### *Chestertons Covent Garden Lettings*

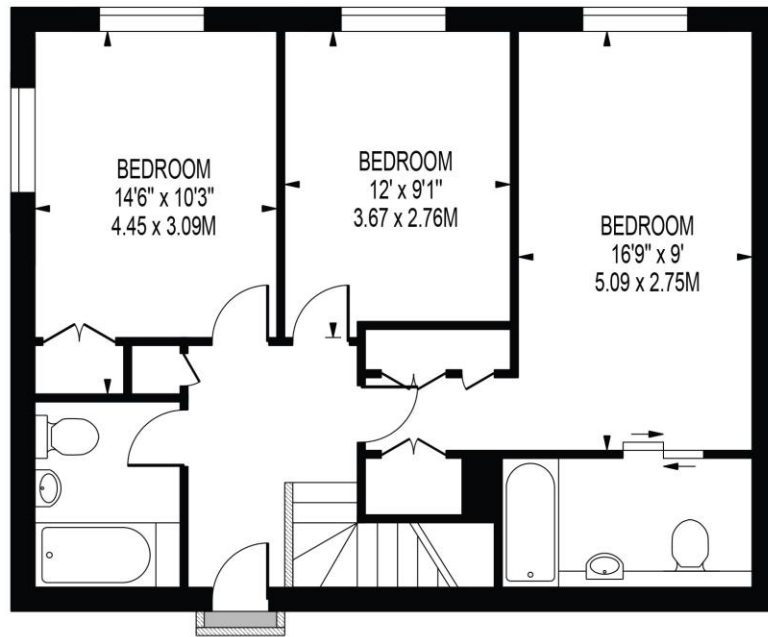
196 Shaftesbury Avenue  
Covent Garden  
London  
WC2H 8JF  
coventgardenlettingsusers@chestertons.co.uk  
02030408400  
chestertons.co.uk

Additional tenant charges apply (fees apply to non-AST tenancies only)  
Tenancy Agreement Fee: £300  
References per Tenant/Guarantor: £60  
Inventory check (approx. £100 – £250 inc. VAT)  
chestertons.co.uk/property-to-rent/applicable-fees

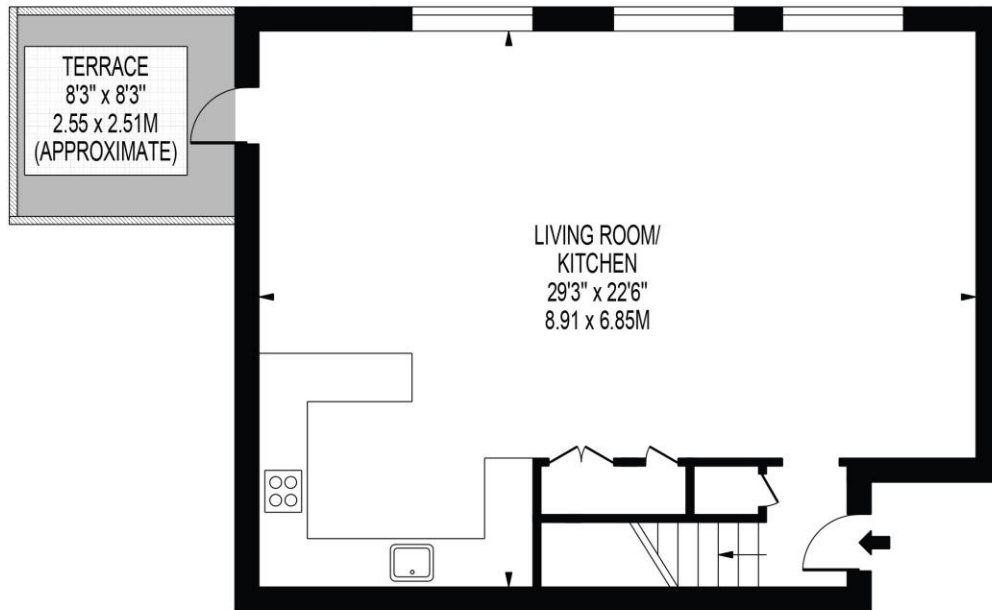


# DEAN STREET

APPROXIMATE GROSS INTERNAL FLOOR AREA: 1294 SQ FT - 120.26 SQ M



FOURTH FLOOR



THIRD FLOOR

FOR ILLUSTRATION PURPOSES ONLY

THIS FLOOR PLAN SHOULD BE USED AS A GENERAL OUTLINE FOR GUIDANCE ONLY AND DOES NOT CONSTITUTE IN WHOLE OR IN PART AN OFFER OR CONTRACT. ANY INTENDING PURCHASER OR LESSEE SHOULD SATISFY THEMSELVES BY INSPECTION, SEARCHES, ENQUIRIES AND FULL SURVEY AS TO THE CORRECTNESS OF EACH STATEMENT. ANY AREAS, MEASUREMENTS OR DISTANCES QUOTED ARE APPROXIMATE AND SHOULD NOT BE USED TO VALUE A PROPERTY OR BE THE BASIS OF ANY SALE OR LET.

