



The Little Adelphi
John Adam Street, WC2N

CHESTERTONS





A bright one bedroom apartment with large private roof terrace and well-proportioned rooms found in a desirable portered development. Close proximity to Embankment Gardens and delights of the West End.

- 24 Hr Concierge
- Private roof terrace
- Separate Kitchen

£2,600 pcm

Additional tenant charges apply (fees apply to non-AST tenancies only)

Tenancy Agreement Fee: £300

References per Tenant/Guarantor: £60

Inventory check (approx. £100 – £250 inc. VAT)

chestertons.co.uk/property-to-rent/applicable-fees

Energy Efficiency Rating		Current	Potential
100-109	A		
81-100	B		
69-80	C	81	83
55-68	D		
39-54	E		
21-38	F		
1-20	G		

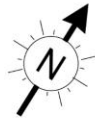
Not energy efficient - higher running costs

England, Scotland & Wales EU Directive 2002/91/EC

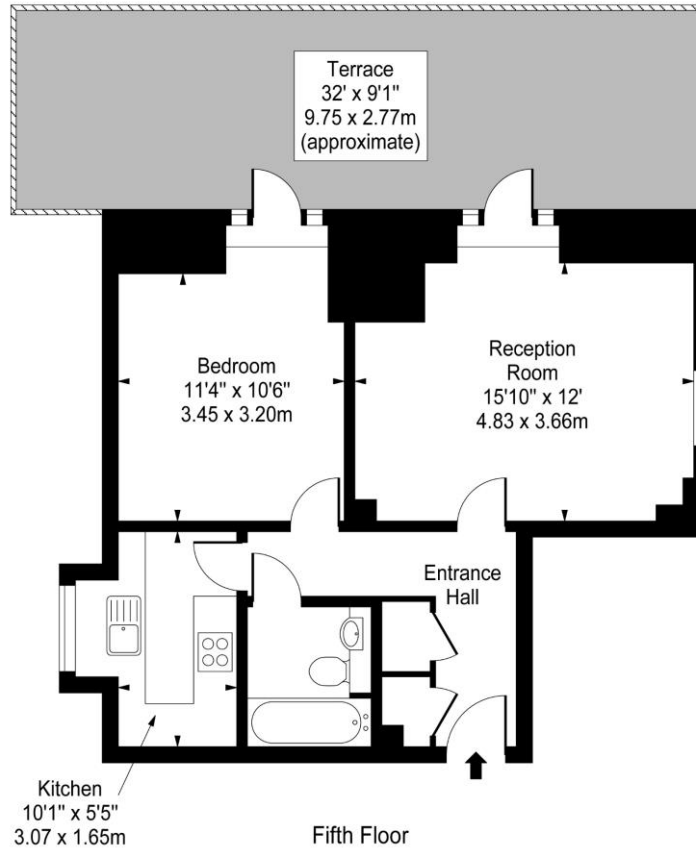
Minimum Term: months
Deposit Required: £3,000.00
Local Authority: City Of Westminster
Council Tax Band:
EPC Rating: C
Unfurnished

Chestertons Covent Garden Lettings

196 Shaftesbury Avenue
 Covent Garden
 London
 WC2H 8JF
coventgarden@chestertons.co.uk
 02030408400



The Little Adelphi, John Adam Street



Approx Gross Internal Area 526 Sq Ft - 48.86 Sq M

For Illustration Purposes Only - Not To Scale

www.goldlens.co.uk

Ref. No. 008111.1

Chesterton Global Ltd trading as Chestertons for themselves and for the vendor of this property whose agents they are, give notice that (i) these particulars do not constitute any part of an offer or contract, (ii) all statements contained within these particulars are made without responsibility on the part of Chestertons or the vendor, (iii) whilst made in good faith, none of the statements contained within these particulars are to be relied upon as a statement or representation of fact, (iv) any intending purchasers must satisfy themselves by inspection or otherwise as to the correctness of each of the statements contained within these particulars, (v) the vendor does not make or give either Chestertons or any person in their employment any authority to make or give representation or warranty whatsoever in relation to this property. Wide angle lenses may be used. ©Copyright Chestertons | Chesterton Global Ltd | Registered Office 40 Connaught Street, Hyde Park, London W2 2AB Registered Company Number 05334580.



This paper is
100% recyclable