



# Shaftesbury Avenue

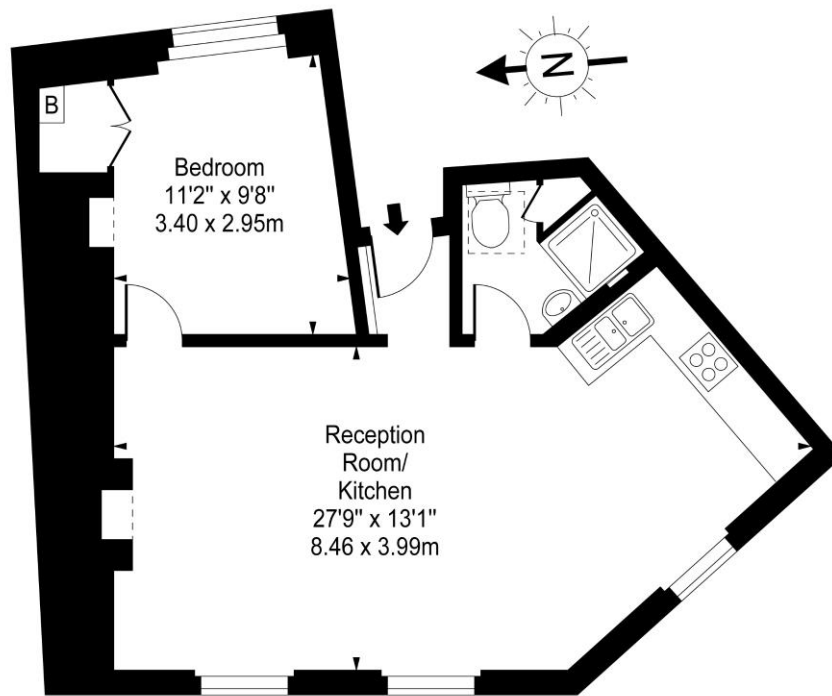
Covent Garden, WC2H

£2,708.33 per month  
(£625 per week)

Stylish one bedroom situated on an iconic Covent Garden street. Situated on the top floor, the apartment is flooded with natural light and boast exposed brick & vaulted ceiling providing excellent ceiling height.

CHESTERTONS

## Shaftesbury Avenue



Third Floor

Approx Gross Internal Area **507 Sq Ft - 47.10 Sq M**

For Illustration Purposes Only - Not To Scale

[www.goldlens.co.uk](http://www.goldlens.co.uk)

Ref. No. 010384J

**Minimum Term:** months  
**Deposit Required:** £0.00  
**Local Authority:**  
**Council Tax Band:**  
**EPC Rating:** E  
**Furnished**

Energy Efficiency Rating		Current	Potential
Very energy efficient - lower running costs			
(92+)	A		
(81-91)	B		
(69-80)	C		
(55-68)	D		
(39-54)	E	54	63
(21-38)	F		
(1-20)	G		
Not energy efficient - higher running costs			
England, Scotland & Wales		EU Directive 2002/91/EC	

### Chestertons Covent Garden Lettings

196 Shaftesbury Avenue  
 Covent Garden  
 London  
 WC2H 8JF  
[lettings.coventgarden@chestertons.com](mailto:lettings.coventgarden@chestertons.com)  
 02030408400

Additional tenant charges apply (fees apply to non-AST tenancies only)  
 Tenancy Agreement Fee: £300  
 References per Tenant/Guarantor: £60  
 Inventory check (approx. £100 – £250 inc. VAT)  
[chestertons.com/property-to-rent/applicable-fees](http://chestertons.com/property-to-rent/applicable-fees)

Chesterton Global Ltd trading as Chestertons for themselves and for the vendor of this property whose agents they are, give notice that (i) these particulars do not constitute any part of an offer or contract, (ii) all statements contained within these particulars are made without responsibility on the part of Chestertons or the vendor, (iii) whilst made in good faith, none of the statements contained within these particulars are to be relied upon as a statement or representation of fact, (iv) any intending purchasers must satisfy themselves by inspection or otherwise as to the correctness of each of the statements contained within these particulars, (v) the vendor does not make or give either Chestertons or any person in their employment any authority to make or give representation or warranty whatsoever in relation to this property. Wide angle lenses may be used. ©Copyright Chestertons | Chesterton Global Ltd | Registered Office 40 Connaught Street, Hyde Park, London W2 2AB Registered Company Number 05334580.



This paper is 100% recyclable