

## Cranfield House

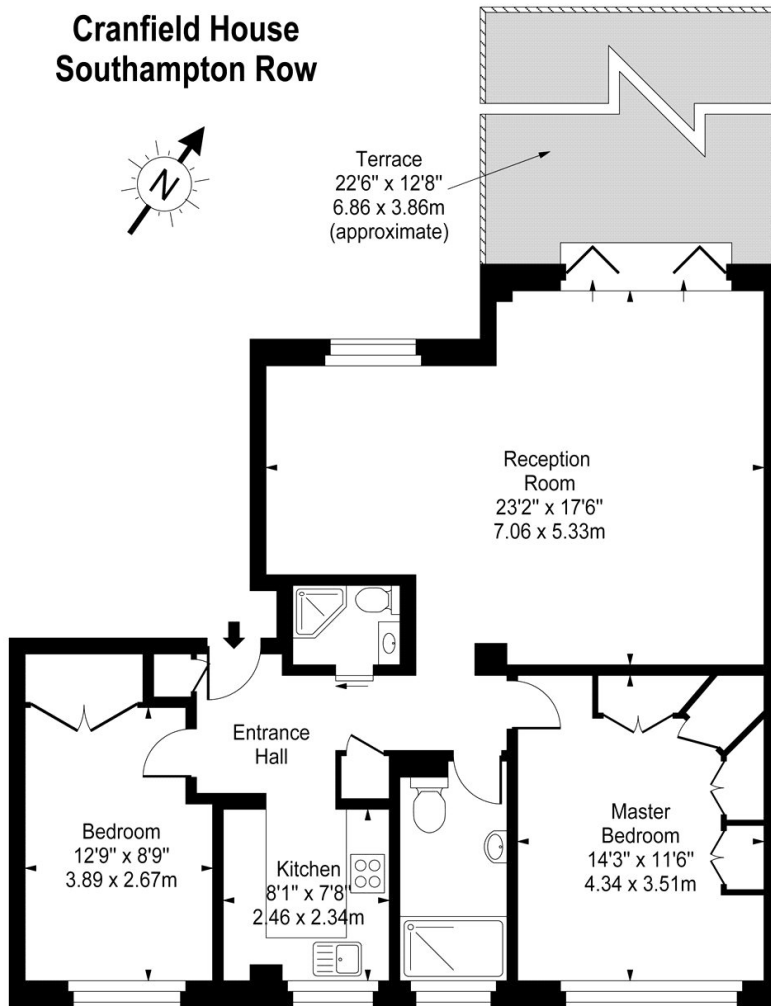
Southampton Row, WC1B

£700 per week  
(£3,033.33 pcm)

Found within this portered block is a spacious 2 double bedroom apartment close to Russell Square & Holborn tube stations offering a large reception with separate kitchen perfect for entertaining with sole access to a wonderful terrace.

**CHESTERTONS**  
*Covent Garden*

## Cranfield House Southampton Row



First Floor

Approx Gross Internal Area **883 Sq Ft - 82.03 Sq M**

For Illustration Purposes Only - Not To Scale

[www.goldlens.co.uk](http://www.goldlens.co.uk)

Ref. No. 003659A

**Tenure:** Long Let

**Furnished**

Additional tenant charges apply

Tenancy Agreement Fee: £300

References per Tenant/Guarantor: £60

Inventory check (approx. £100 – £250 inc. VAT)

[chestertons.com/property-to-rent/applicable-fees](http://chestertons.com/property-to-rent/applicable-fees)

Energy Efficiency Rating		Current	Potential
Very energy efficient - lower running costs			
(92-)	A		
(81-91)	B		
(69-80)	C	77	82
(55-68)	D		
(39-54)	E		
(21-38)	F		
(1-20)	G		
Not energy efficient - higher running costs			
England, Scotland & Wales		EU Directive 2002/91/EC	

## Chestertons Covent Garden Lettings

196 Shaftesbury Avenue

London

WC2H 8JF

[lettings.coventgarden@chestertons.com](mailto:lettings.coventgarden@chestertons.com)

02030408400

[chestertons.com](http://chestertons.com)

