



# Montague Street

London, WC1B

£3,250 per month  
(£750 per week)

Newly refurbished 1 bedroom apartment found on the 1st floor of a converted Grade II listed building. Finished to an excellent standard throughout with ample storage and a separate private utility room. Video viewing available.



# Montague Street

London, WC1B

-



Newly refurbished 1 bedroom apartment found on the 1st floor of a converted Grade II listed building overlooking the British Museum. Finished to an excellent standard throughout with ample storage and a separate private utility room. Video viewing available.

Close proximity to Holborn and Russell Square tube station providing access to Central and Piccadilly Lines.

---

**Minimum Term:** months  
**Deposit Required:** £0.00  
**Local Authority:** Camden  
**Council Tax Band:** F  
**EPC Rating:** C  
**Furnished, Part Furnished, Unfurnished**

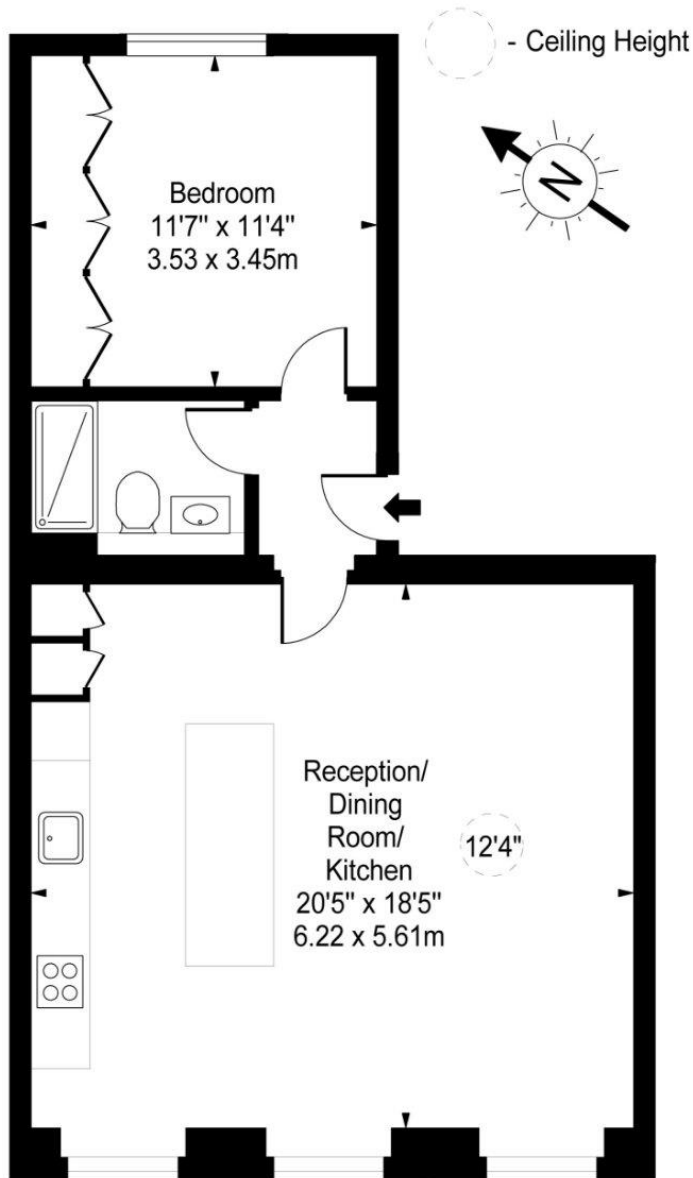
---

### *Chestertons Covent Garden Lettings*

196 Shaftesbury Avenue  
Covent Garden  
London  
WC2H 8JF  
coventgarden@chestertons.co.uk  
02030408400  
chestertons.co.uk

Additional tenant charges apply (fees apply to non-AST tenancies only)  
Tenancy Agreement Fee: £300  
References per Tenant/Guarantor: £60  
Inventory check (approx. £100 – £250 inc. VAT)  
[chestertons.co.uk/property-to-rent/applicable-fees](https://www.chestertons.co.uk/property-to-rent/applicable-fees)

# Montague Street



First Floor

Approx Gross Internal Area **604 Sq Ft - 56.11 Sq M**

For Illustration Purposes Only - Not To Scale

[www.goldlens.co.uk](http://www.goldlens.co.uk)

Ref. No. 013448E

