



Three Cups Yard
Sandland Street, WC1R

CHESTERTONS





Exclusive to Chestertons: This two bedroom apartment offers 900ft² of living space boasting double ceiling height reception, wooden flooring and plenty of natural light. Conveniently located for Holborn tube. VIDEO VIEWING AVAILABLE.

- Close to the area's Universities for students and academics
- VIDEO VIEWING AVAILABLE
- ideal of sharers

£850 per week (£3,683.33 pcm)

Additional tenant charges apply (fees apply to non-AST tenancies only)

Tenancy Agreement Fee: £300

References per Tenant/Guarantor: £60

Inventory check (approx. £100 – £250 inc. VAT)

chestertons.co.uk/property-to-rent/applicable-fees

Energy Efficiency Rating		Current	Potential
90-100	A		
81-89	B	86	86
69-80	C		
55-68	D		
49-54	E		
41-48	F		
35-40	G		

Not energy efficient - higher running costs

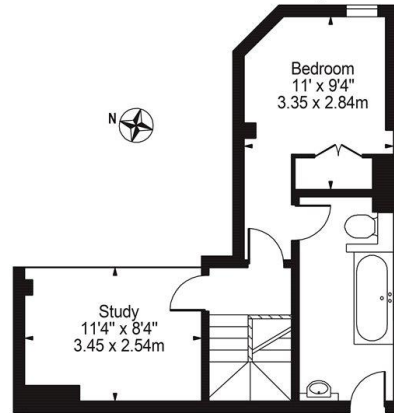
England, Scotland & Wales EU Directive 2002/91/EC

Minimum Term: 12 months
Deposit Required: £4,250.00
Local Authority: Camden
Council Tax Band: G
EPC Rating: C
Furnished, Part Furnished

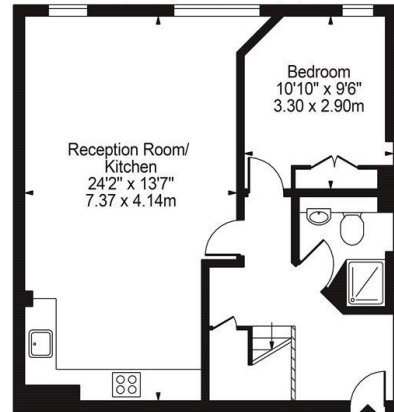
Chestertons Covent Garden Lettings
 196 Shaftesbury Avenue
 Covent Garden
 London
 WC2H 8JF
lettings.coventgarden@chestertons.co.uk
 02030408400

Three Cups Yard, WC1

Approx. Gross Internal Area 925 Sq Ft - 85.94 Sq M



Mezzanine
(349 Sq Ft - 32.42 Sq M)



Second Floor
(576 Sq Ft - 53.51 Sq M)

For Illustration Purposes Only - Not To Scale

This floor plan should be used as a general outline for guidance only and does not constitute in whole or in part an offer or contract. Any intending purchaser or lessee should satisfy themselves by inspection, searches, enquiries and full survey as to the correctness of each statement. Any areas, measurements or distances quoted are approximate and should not be used to value a property or be the basis of any sale or let.

