



Great Russell Street

Bloomsbury, WC1B

£3,250 per month
(£750 per week)

A stunning 1 BEDROOM APARTMENT finished to the highest standard with a fully fitted kitchen in the open plan reception, a large bedroom and a bathroom. Secure GATED DEVELOPMENT with lift access to the fifth floor. VIDEO VIEWING AVAILABLE.

CHESTERTONS



Great Russell Street

Bloomsbury, WC1B

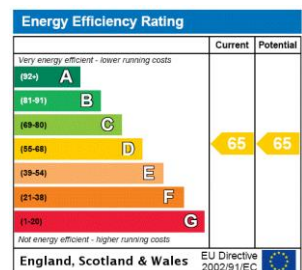
- 1 Bedroom
- 1 Bathroom
- Open Plan Reception
- 5th Floor Apartment



A stunning 1 BEDROOM APARTMENT finished to the highest standard with a fully fitted kitchen in the open plan reception, a large bedroom and a bathroom. Secure GATED DEVELOPMENT with lift access to the fifth floor.

Within close proximity to Tottenham Court Road tube station providing access to Central and Northern Lines.

Minimum Term: 12 months
Deposit Required: £3,750.00
Local Authority: London Borough Of Camden
Council Tax Band: E
EPC Rating: D
Furnished, Part Furnished, Unfurnished

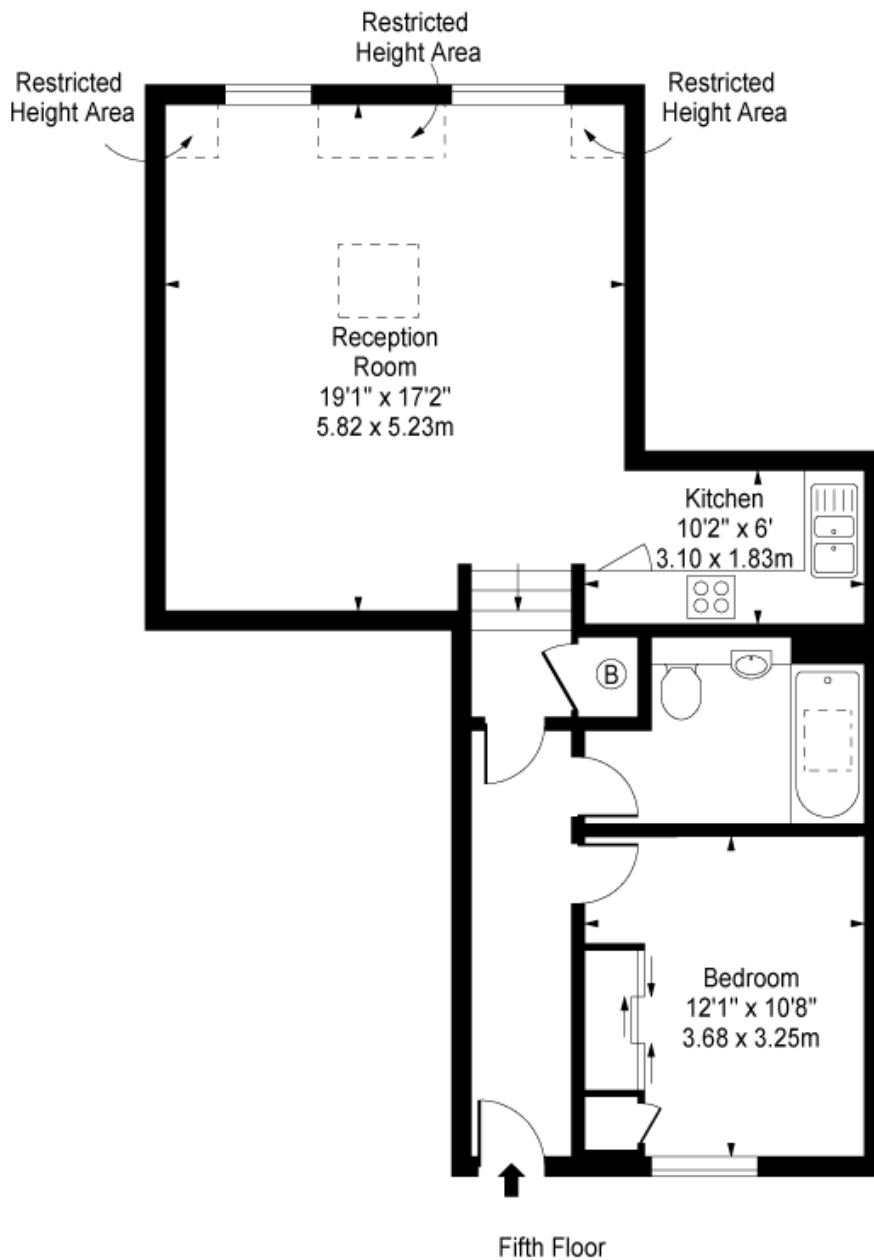


Chestertons Covent Garden Lettings

196 Shaftesbury Avenue
 Covent Garden
 London
 WC2H 8JF
 coventgarden@chestertons.co.uk
 02030408400
 chestertons.co.uk

Additional tenant charges apply (fees apply to non-AST tenancies only)
 Tenancy Agreement Fee: £300
 References per Tenant/Guarantor: £60
 Inventory check (approx. £100 – £250 inc. VAT)
 chestertons.co.uk/property-to-rent/applicable-fees

Great Russell Street, W1T 7AQ



Approx Gross Internal Area 660 Sq Ft - 61.31 Sq M
(Excluding Restricted Height Area)

For Illustration Purposes Only - Not To Scale

Floor Plan by www.bpmmediagroup.com

Ref: No. P45708

