



Neal Street

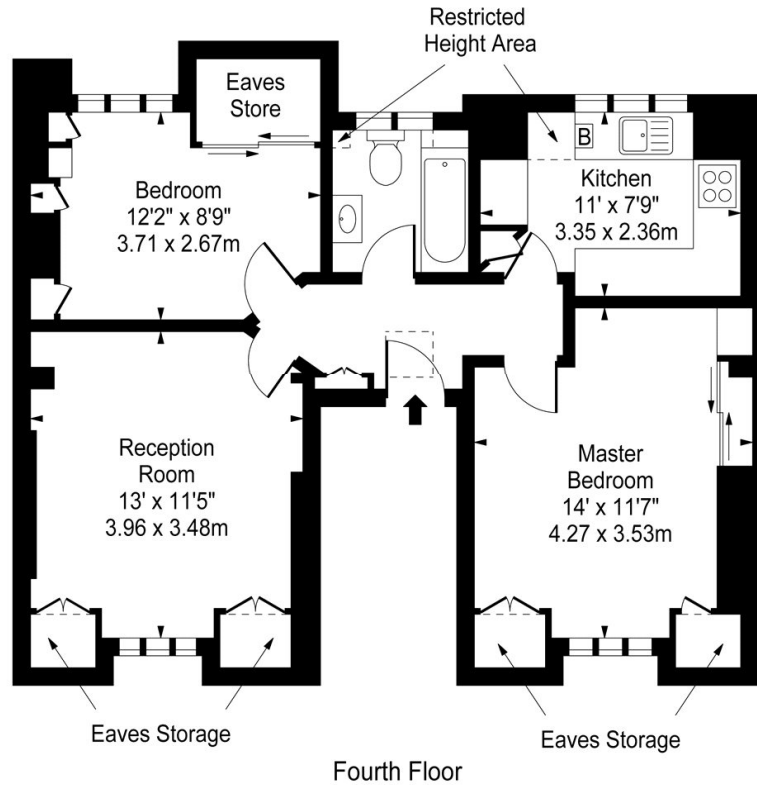
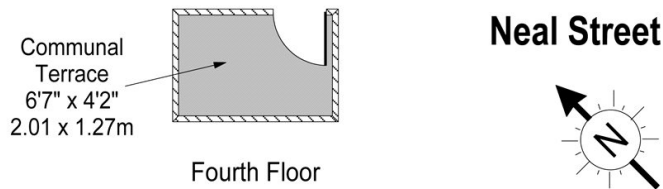
London, WC2H

£495 per week

(£2,145 pcm)

Found on the top floor is this 2 double bedrooms apartment with ample storage, a bright reception room, separate kitchen, bathroom and access to a communal terrace. VIDEO VIEWING AVAILABLE. *2 week rent free period*

CHESTERTONS



Approx Gross Internal Area **605 Sq Ft - 56.20 Sq M**
(Including Restricted Height Area & Eaves Storages)

For Illustration Purposes Only - Not To Scale
www.goldlens.co.uk
Ref. No. 002080

Tenure: Long Let

Part Furnished, Unfurnished

Additional tenant charges apply (fees apply to non-AST tenancies only)

Tenancy Agreement Fee: £300

References per Tenant/Guarantor: £60

Inventory check (approx. £100 – £250 inc. VAT)

chestertons.com/property-to-rent/applicable-fees

Energy Efficiency Rating		Current	Potential
Very energy efficient - lower running costs			
(92+)	A		
(81-91)	B		
(69-80)	C		
(55-68)	D	62	63
(39-54)	E		
(21-38)	F		
(1-20)	G		
Not energy efficient - higher running costs			
England, Scotland & Wales		EU Directive 2002/91/EC	

Chestertons Covent Garden Lettings

196 Shaftesbury Avenue

Covent Garden

London

WC2H 8JF

lettings.coventgarden@chestertons.com

02030408400

chestertons.com

Chesterton Global Ltd trading as Chestertons for themselves and for the vendor of this property whose agents they are, give notice that (i) these particulars do not constitute any part of an offer or contract, (ii) all statements contained within these particulars are made without responsibility on the part of Chestertons or the vendor, (iii) whilst made in good faith, none of the statements contained within these particulars are to be relied upon as a statement or representation of fact, (iv) any intending purchasers must satisfy themselves by inspection or otherwise as to the correctness of each of the statements contained within these particulars, (v) the vendor does not make or give either Chestertons or any person in their employment any authority to make or give representation or warranty whatsoever in relation to this property. Wide angle lenses may be used. ©Copyright Chestertons | Chesterton Global Ltd | Registered Office 40 Connaught Street, Hyde Park, London W2 2AB Registered Company Number 05334580.