



Bedford Court Mansions

Adeline Place, WC1B

£5,200 per month
(£1,200 per week)

A stunning two bedroom apartment on the raised ground floor of one of Bloomsbury's most iconic mansion blocks, Bedford Court Mansions.



Bedford Court Mansions

Adeline Place, WC1B

-

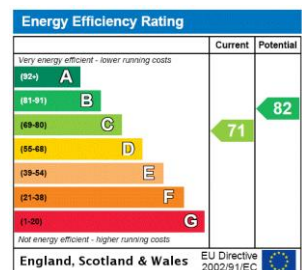


A stunning two bedroom apartment on the raised ground floor of one of Bloomsbury's most iconic mansion blocks, Bedford Court Mansions.

The property has been finished beautifully throughout and offers; a large kitchen/living room with wood floors, master bedroom with built in storage, a fantastic master bathroom/WC with bath and large walk-in shower and large second double bedroom with ensuite bathroom/WC with walk-in shower.

The property is ideally located just off Bedford Square close to Tottenham Court Road tube station and within easy walking

Minimum Term: 12 months
Deposit Required: £7,200.00
Local Authority: London Borough Of Camden
Council Tax Band: F
EPC Rating: C
Unfurnished



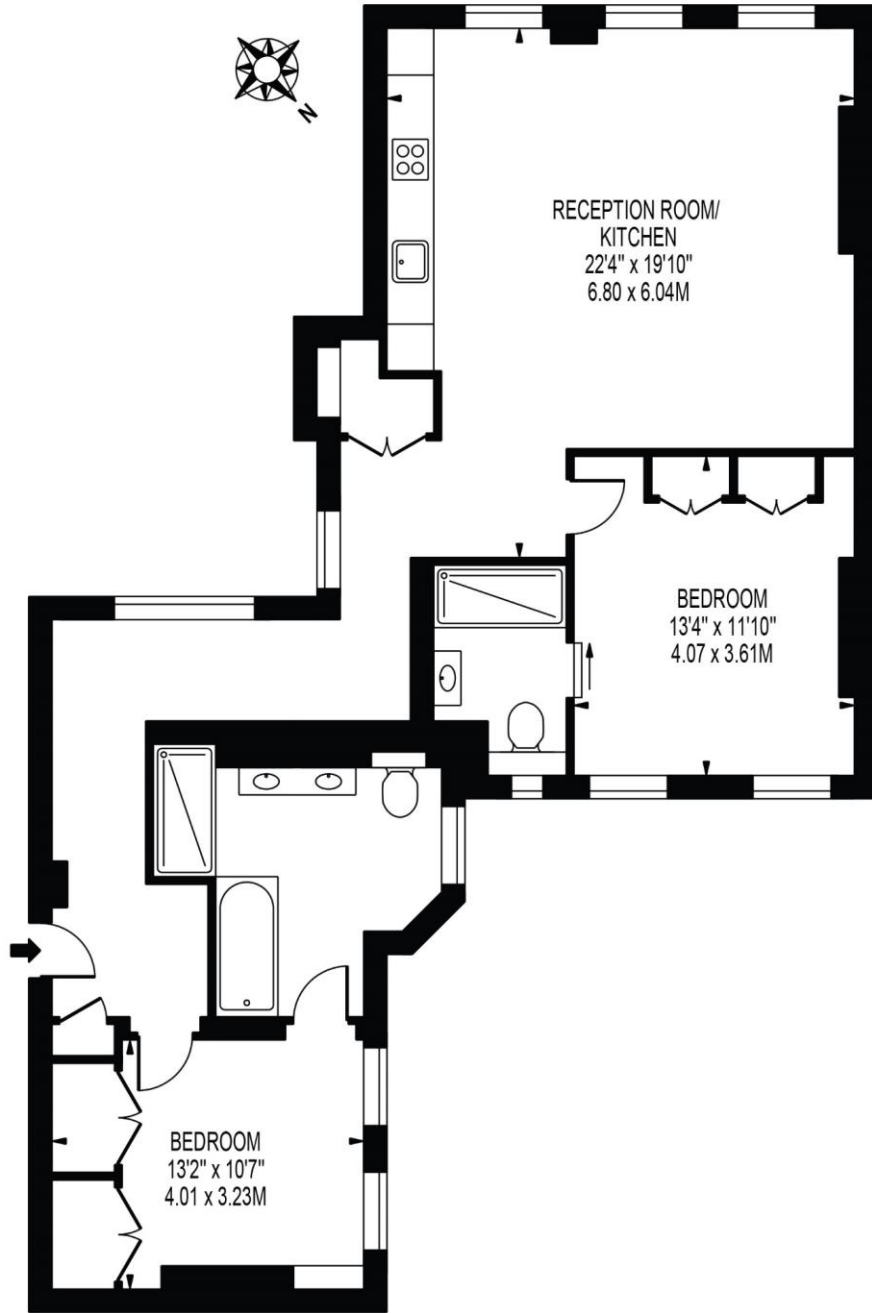
Chestertons Covent Garden Lettings

196 Shaftesbury Avenue
 Covent Garden
 London
 WC2H 8JF
 coventgarden@chestertons.co.uk
 02030408400
 chestertons.co.uk

Additional tenant charges apply (fees apply to non-AST tenancies only)
 Tenancy Agreement Fee: £300
 References per Tenant/Guarantor: £60
 Inventory check (approx. £100 – £250 inc. VAT)
chestertons.co.uk/property-to-rent/applicable-fees

BEDFORD COURT MANSIONS

APPROXIMATE GROSS INTERNAL FLOOR AREA: 1043 SQ FT - 96.91 SQ M



GROUND FLOOR

FOR ILLUSTRATION PURPOSES ONLY

THIS FLOOR PLAN SHOULD BE USED AS A GENERAL OUTLINE FOR GUIDANCE ONLY AND DOES NOT CONSTITUTE IN WHOLE OR IN PART AN OFFER OR CONTRACT. ANY INTENDING PURCHASER OR LESSEE SHOULD SATISFY THEMSELVES BY INSPECTION, SEARCHES, ENQUIRIES AND FULL SURVEY AS TO THE CORRECTNESS OF EACH STATEMENT. ANY AREAS, MEASUREMENTS OR DISTANCES QUOTED ARE APPROXIMATE AND SHOULD NOT BE USED TO VALUE A PROPERTY OR BE THE BASIS OF ANY SALE OR LET.

Chesterton Global Ltd trading as Chestertons for themselves and for the vendor of this property whose agents they are, give notice that (i) these particulars do not constitute any part of an offer or contract, (ii) all statements contained within these particulars are made without responsibility on the part of Chestertons or the vendor, (iii) whilst made in good faith, none of the statements contained within these particulars are to be relied upon as a statement or representation of fact, (iv) any intending purchasers must satisfy themselves by inspection or otherwise as to the correctness of each of the statements contained within these particulars, (v) the vendor does not make or give either Chestertons or any person in their employment any authority to make or give representation or warranty whatsoever in relation to this property. Wide angle lenses may be used. ©Copyright Chestertons | Chesterton Global Ltd | Registered Office 40 Connaught Street, Hyde Park, London W2 2AB Registered Company Number 05334580.



This paper is 100% recyclable