



Chenies Street Chambers
9 Chenies Street, WC1E

CHESTERTONS





Perfect for sharers, this 2 bedroom apartment boasts over 650 sqft of living space and is located in the heart of Bloomsbury, benefitting from high ceilings, ample storage and a separate kitchen.

- Ideal for sharers
- Convenient for the central & northern lines
- Close to the area's Universities for students and academics
- Available with Deposit alternative option

£2,816.67 pcm

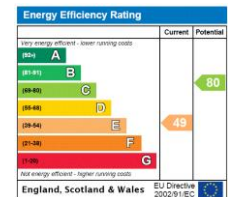
Additional tenant charges apply (fees apply to non-AST tenancies only)

Tenancy Agreement Fee: £300

References per Tenant/Guarantor: £60

Inventory check (approx. £100 – £250 inc. VAT)

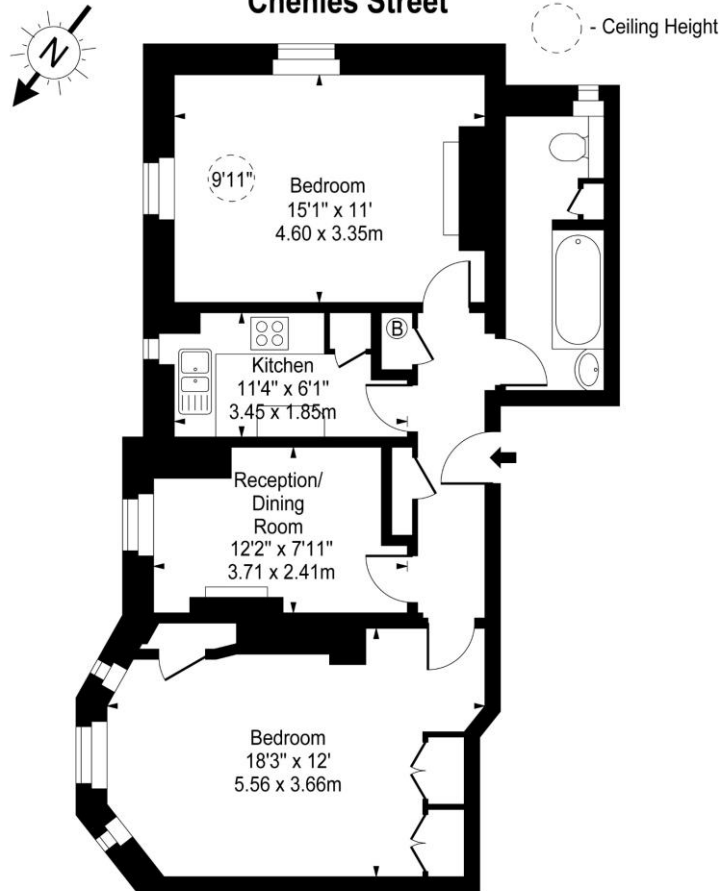
chestertons.co.uk/property-to-rent/applicable-fees



Minimum Term: 12 months
Deposit Required: £3,250.00
Local Authority: London Borough Of Camden
Council Tax Band: E
EPC Rating: E
Furnished

Chestertons Covent Garden Lettings
 196 Shaftesbury Avenue
 Covent Garden
 London
 WC2H 8JF
lettings.coventgarden@chestertons.co.uk
 02030408400

Chenies Street Chambers, Chenies Street



Ground Floor

Approx Gross Internal Area **688 Sq Ft - 63.92 Sq M**

For Illustration Purposes Only - Not To Scale

www.goldlens.co.uk

Ref. No. 010788M

Chesterton Global Ltd trading as Chestertons for themselves and for the vendor of this property whose agents they are, give notice that (i) these particulars do not constitute any part of an offer or contract, (ii) all statements contained within these particulars are made without responsibility on the part of Chestertons or the vendor, (iii) whilst made in good faith, none of the statements contained within these particulars are to be relied upon as a statement or representation of fact, (iv) any intending purchasers must satisfy themselves by inspection or otherwise as to the correctness of each of the statements contained within these particulars, (v) the vendor does not make or give either Chestertons or any person in their employment any authority to make or give representation or warranty whatsoever in relation to this property. Wide angle lenses may be used. ©Copyright Chestertons | Chesterton Global Ltd | Registered Office 40 Connaught Street, Hyde Park, London W2 2AB Registered Company Number 05334580.



This paper is
100% recyclable