



Meard Street

Soho, W1F

£9,966.67 per month
(£2,300 per week)

A truly stunning and substantial SOHO TOWNHOUSE, lovingly renovated throughout to exacting standards this 4 bedroom home benefits from a PRIVATE PATIO. Convenient for Oxford Circus, Tottenham Court Road and Leicester Square tube stations.



Meard Street

Soho, W1F

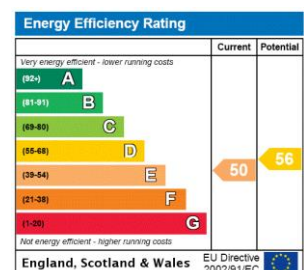
- Substantial Home
- 4 double bedrooms
- 4 bathrooms
- Private patio garden
- Newly renovated throughout



A truly stunning and substantial Soho townhouse, lovingly renovated throughout to exacting standards this 4 bedroom Grade II listed home benefits from a private patio. Convenient for Oxford Circus, Tottenham Court Road and Leicester Square tube stations.

Divided over 5 floors the property comprises of a 1st floor reception boasting plenty of character and charm, dining room with a feature fireplace, large modern kitchen, 2nd informal reception, 3 double bedrooms all with en-suite bathrooms, further double bedroom, guest bathroom, patio garden and utility room.

Minimum Term: 12 months
Deposit Required: £13,800.00
Local Authority:
Council Tax Band: H
EPC Rating: E
Unfurnished

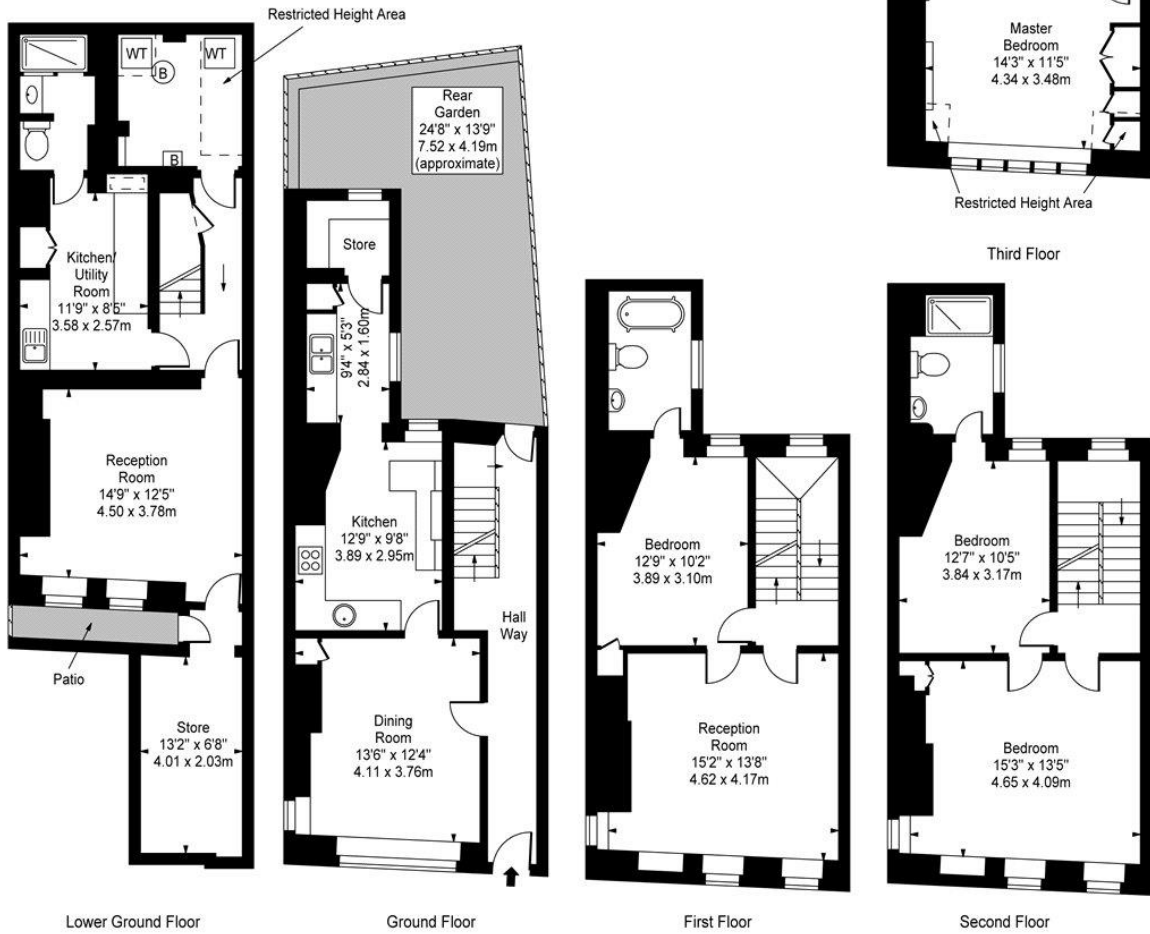


Chestertons Covent Garden Lettings

196 Shaftesbury Avenue
 Covent Garden
 London
 WC2H 8JF
 coventgarden@chestertons.co.uk
 02030408400
 chestertons.co.uk

Additional tenant charges apply (fees apply to non-AST tenancies only)
 Tenancy Agreement Fee: £300
 References per Tenant/Guarantor: £60
 Inventory check (approx. £100 – £250 inc. VAT)
chestertons.co.uk/property-to-rent/applicable-fees

Meard Street



Approx Gross Internal Area **2401 Sq Ft - 223.05 Sq M**
 (Including Restricted Height Area & Store)
 For Illustration Purposes Only - Not To Scale
 www.goldlens.co.uk
 Ref. No. 003668M

