



# Carburton Street

London, W1W

£2,275 per month  
(£525 per week)

This bright and spacious apartment is located on the first floor of a well-maintained purpose-built building in a peaceful residential neighbourhood at the heart of Fitzrovia.

**CHESTERTONS**



# Carburton Street

London, W1W

•



This bright and spacious apartment is located on the first floor of a well-maintained purpose-built building in a peaceful residential neighbourhood at the heart of Fitzrovia.

The apartment boasts a large reception room, a fully equipped kitchen, a double bedroom, and a bathroom. It is well-maintained with plenty of natural light and ample storage space.

Spacious Reception Room, double bedroom, separate kitchen, excellent storage space, wooden flooring & furnished.

Situated in the serene Carburton Street area, it's just a short walk

**Minimum Term:** 12 months  
**Deposit Required:** £2,625.00  
**Local Authority:** City of Westminster  
**Council Tax Band:** E  
**EPC Rating:** C  
**Furnished**

Energy Efficiency Rating		
	Current	Potential
Very energy efficient - lower running costs		
<b>A</b> (92-100)		
<b>B</b> (81-91)		
<b>C</b> (69-80)	75	79
<b>D</b> (55-68)		
<b>E</b> (39-54)		
<b>F</b> (21-38)		
<b>G</b> (1-20)		
Not energy efficient - higher running costs		
England, Scotland & Wales EU Directive 2002/91/EC		

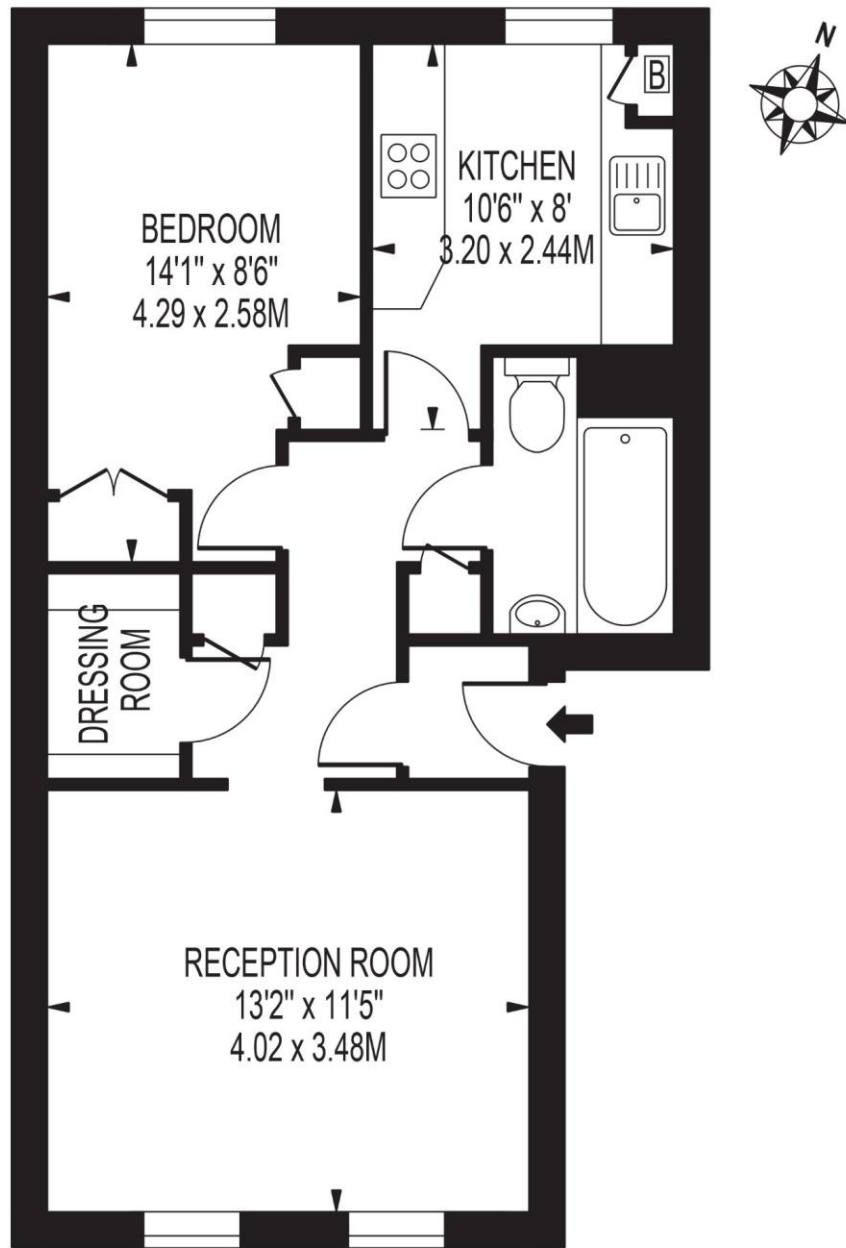
### *Chestertons Covent Garden Lettings*

196 Shaftesbury Avenue  
 Covent Garden  
 London  
 WC2H 8JF  
 coventgarden@chestertons.co.uk  
 02030408400  
 chestertons.co.uk

Additional tenant charges apply (fees apply to non-AST tenancies only)  
 Tenancy Agreement Fee: £300  
 References per Tenant/Guarantor: £60  
 Inventory check (approx. £100 – £250 inc. VAT)  
 chestertons.co.uk/property-to-rent/applicable-fees

# CARBURTON STREET

APPROXIMATE GROSS INTERNAL FLOOR AREA: 481 SQ FT - 44.68 SQ M



## FIRST FLOOR

FOR ILLUSTRATION PURPOSES ONLY

THIS FLOOR PLAN SHOULD BE USED AS A GENERAL OUTLINE FOR GUIDANCE ONLY AND DOES NOT CONSTITUTE IN WHOLE OR IN PART AN OFFER OR CONTRACT.  
ANY INTENDING PURCHASER OR LESSEE SHOULD SATISFY THEMSELVES BY INSPECTION, SEARCHES, ENQUIRIES AND FULL SURVEY AS TO THE CORRECTNESS OF EACH STATEMENT.  
ANY AREAS, MEASUREMENTS OR DISTANCES QUOTED ARE APPROXIMATE AND SHOULD NOT BE USED TO VALUE A PROPERTY OR BE THE BASIS OF ANY SALE OR LET.

