



Windmill Street

Fitzrovia, W1T

£3,250 per month
(£750 per week)

Chestertons are proud to offer this two bedroom 600 square feet apartment on the 2nd floor of a well kept, secure residential building on Windmill Street, W1T.

CHESTERTONS



Windmill Street

Fitzrovia, W1T

•

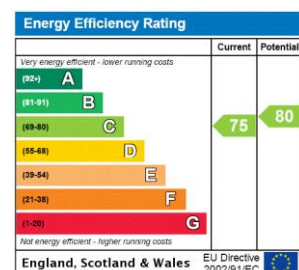


Chestertons are proud to offer this two bedroom 600 square feet apartment on the 2nd floor of a well kept, secure residential building on Windmill Street, W1T.

The apartment has a fresh feel throughout and has good quality wooden floors, a well kept bathroom and a spacious reception/kitchen area, with a private and spacious balcony just off of it.

Benefits of the area include being right on the corner of Charlotte Street, a street famously known for it's eclectic selection of well known eateries, such as Roka, the Charlotte Street Hotel, Circolo

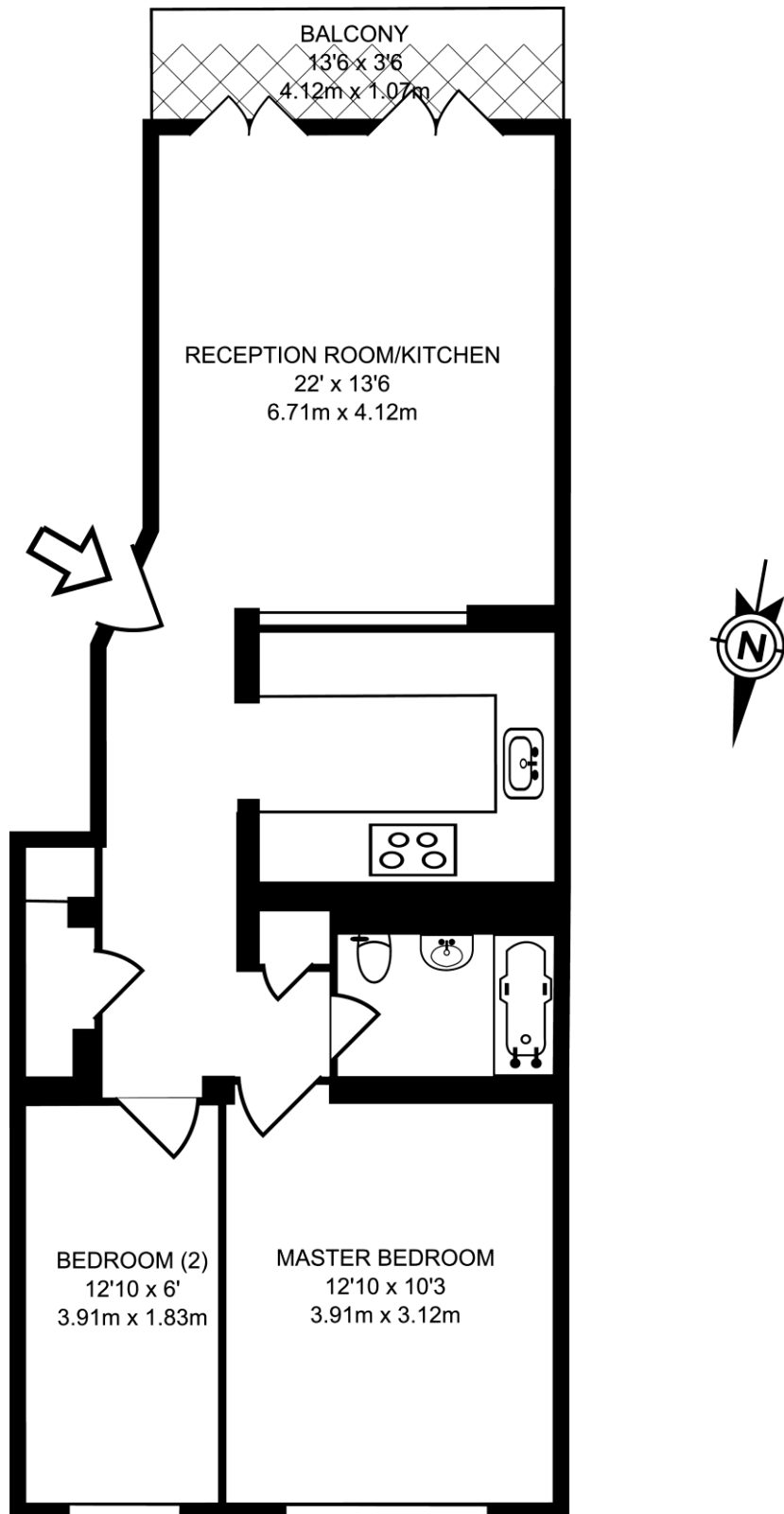
Minimum Term: 12 months
Deposit Required: £3,750.00
Local Authority: London Borough Of Camden
Council Tax Band: E
EPC Rating: C



Chestertons Covent Garden Lettings

196 Shaftesbury Avenue
 Covent Garden
 London
 WC2H 8JF
 coventgarden@chestertons.co.uk
 02030408400
 chestertons.co.uk

Additional tenant charges apply (fees apply to non-AST tenancies only)
 Tenancy Agreement Fee: £300
 References per Tenant/Guarantor: £60
 Inventory check (approx. £100 – £250 inc. VAT)
 chestertons.co.uk/property-to-rent/applicable-fees



SECOND FLOOR GROSS INTERNAL FLOOR AREA
602 SQ FT/55.92 SQ M

