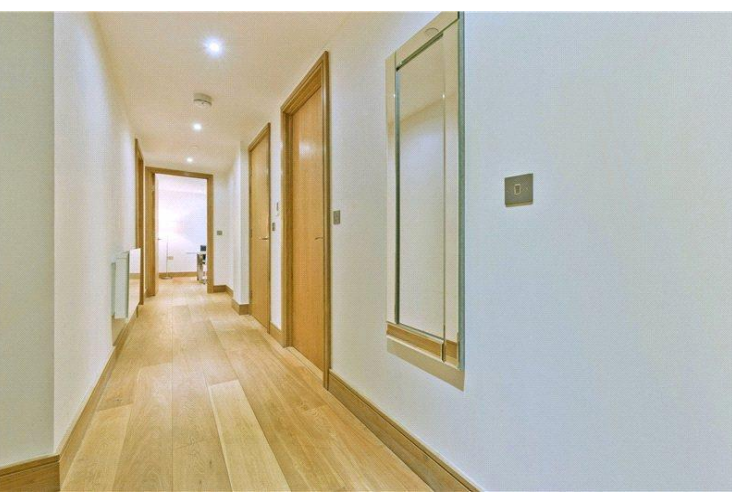




Red Lion Court
City Of London, EC4A

CHESTERTONS





A stylish 2 bedroom apartment, in this desirable development with lift access and excellent access to the City & the West End. Impressive open plan living area, 2 double bedrooms with en-suites, solid wood flooring & air conditioning.

- 2 double bedrooms
- lift access
- aircon
- wooden flooring

£3,900 pcm

Additional tenant charges apply (fees apply to non-AST tenancies only)

Tenancy Agreement Fee: £300

References per Tenant/Guarantor: £60

Inventory check (approx. £100 – £250 inc. VAT)

[chestertons.co.uk/property-to-rent/applicable-fees](https://www.chestertons.co.uk/property-to-rent/applicable-fees)

Energy Efficiency Rating		Current	Potential
92-100	A		
81-91	B	86	86
69-80	C		
55-68	D		
49-54	E		
45-48	F		
35-44	G		

Not energy efficient - higher running costs

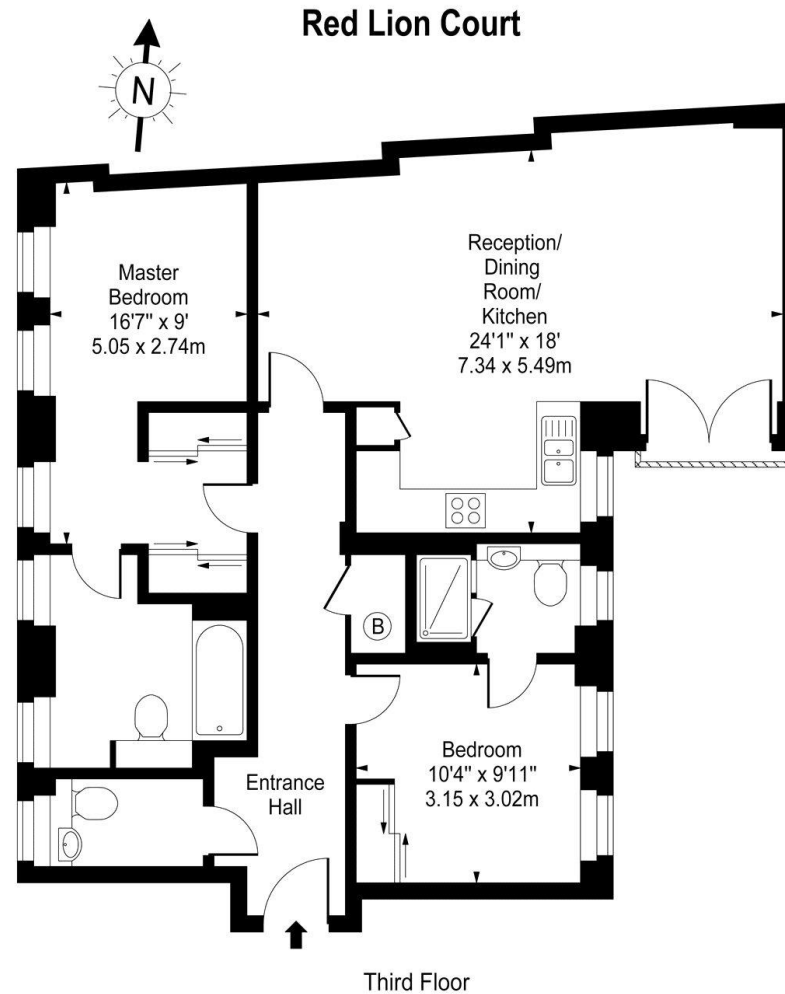
EU Directive 2002/91/EC

England, Scotland & Wales

Minimum Term: 12 months
Deposit Required: £4,500.00
Local Authority: City of Westminster
Council Tax Band: F
EPC Rating: B
Furnished

Chestertons Covent Garden Lettings

196 Shaftesbury Avenue
 Covent Garden
 London
 WC2H 8JF
coventgarden@chestertons.co.uk
 02030408400



Approx Gross Internal Area 915 Sq Ft - 85.00 Sq M

For Illustration Purposes Only - Not To Scale

www.goldlens.co.uk

Ref. No. 00553

Chesterton Global Ltd trading as Chestertons for themselves and for the vendor of this property whose agents they are, give notice that (i) these particulars do not constitute any part of an offer or contract, (ii) all statements contained within these particulars are made without responsibility on the part of Chestertons or the vendor, (iii) whilst made in good faith, none of the statements contained within these particulars are to be relied upon as a statement or representation of fact, (iv) any intending purchasers must satisfy themselves by inspection or otherwise as to the correctness of each of the statements contained within these particulars, (v) the vendor does not make or give either Chestertons or any person in their employment any authority to make or give representation or warranty whatsoever in relation to this property. Wide angle lenses may be used. ©Copyright Chestertons | Chesterton Global Ltd | Registered Office 40 Connaught Street, Hyde Park, London W2 2AB Registered Company Number 05334580.



This paper is
100% recyclable