



# Whetstone Park

London, WC2A

£6,608.33 per month  
(£1,525.00 per week)

Set foot in this amazing three bedroom, two bathroom complex featuring an incredible 1242 sqft of space. Arranged over the fifth and sixth floor of a highly desirable development.

**CHESTERTONS**



# Whetstone Park

London, WC2A

- Long Let | Stunning Modern Three Bedroom Apartment Duplex With A Private Terrace | WC2, London.
- 
- Contact us now for a video viewing or 360 tour.
- 
- Set foot in this amazing three bedroom, two bathroom complex featuring an incredible 1242 sq ft of space. Arranged over the fifth and sixth floor of a highly desirable development, this modern penthouse offers an open-plan kitchen/living room area, floor to ceiling windows, picturesque views over Lincoln's Inn private gardens and two stylishly designed bathrooms.



Chestertons are proud to offer this amazing three bedroom, two bathroom complex featuring an incredible 1242 sq ft of space.

Arranged over the fifth and sixth floor of a highly desirable development, this modern penthouse offers an open-plan kitchen/living room area, floor to ceiling windows, picturesque views over Lincoln's Inn private gardens and two stylishly designed bathrooms.

This property is perfectly located with Covent Garden just minutes away and by being equidistant between Holborn and Chancery Lane underground stations giving you the opportunity to enjoy the best

**Minimum Term:** 12 months  
**Deposit Required:** £9,150.00  
**Local Authority:** Camden  
**Council Tax Band:** F  
**EPC Rating:** C  
**Furnished**

Energy Efficiency Rating		
	Current	Potential
Very energy efficient - lower running costs		
<b>A</b> (92-100)		
<b>B</b> (81-91)		
<b>C</b> (69-80)	76	76
<b>D</b> (55-68)		
<b>E</b> (39-54)		
<b>F</b> (21-38)		
<b>G</b> (1-20)		
Not energy efficient - higher running costs		
England, Scotland & Wales		EU Directive 2002/91/EC

### Chestertons Covent Garden Lettings

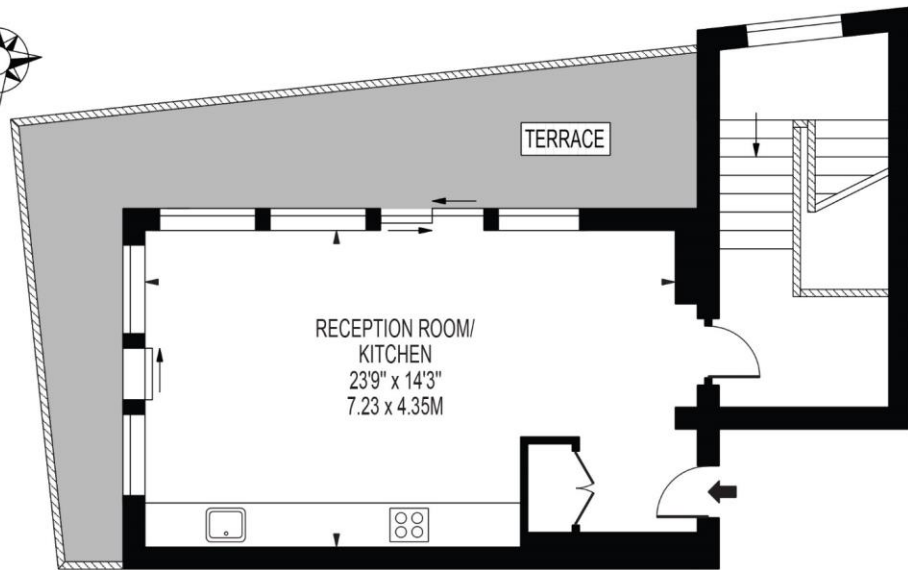
196 Shaftesbury Avenue  
 Covent Garden  
 London  
 WC2H 8JF  
 coventgarden@chestertons.co.uk  
 02030408400  
 chestertons.co.uk

Additional tenant charges apply (fees apply to non-AST tenancies only)  
 Tenancy Agreement Fee: £300  
 References per Tenant/Guarantor: £60  
 Inventory check (approx. £100 – £250 inc. VAT)  
 chestertons.co.uk/property-to-rent/applicable-fees

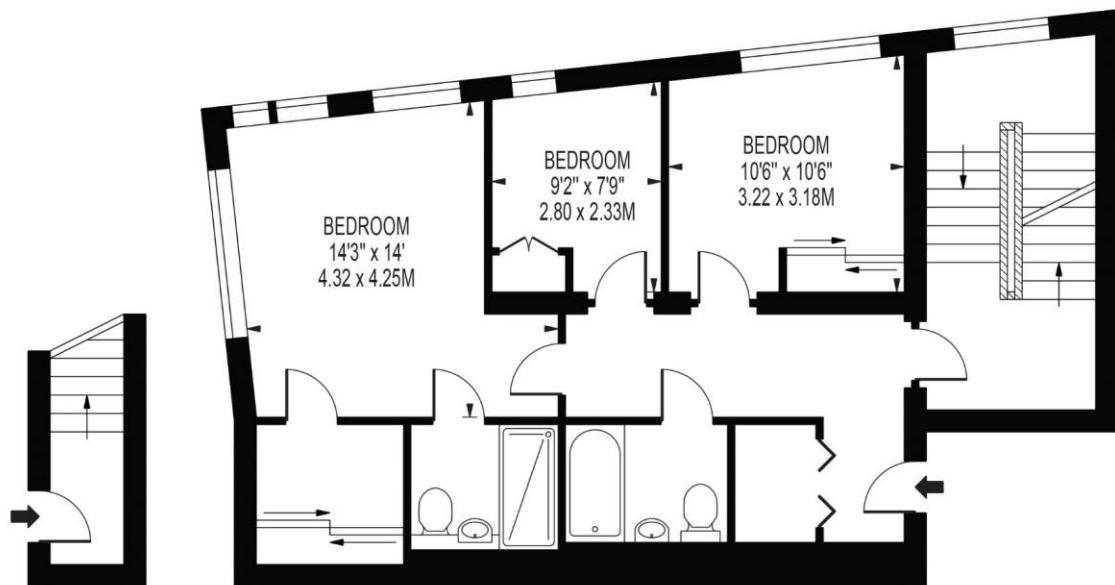


# WHETSTON PARK

APPROXIMATE GROSS INTERNAL FLOOR AREA: 1245 SQ FT - 115.66 SQ M



SIXTH FLOOR



FOURTH FLOOR  
ENTRANCE

FIFTH FLOOR

FOR ILLUSTRATION PURPOSES ONLY

THIS FLOOR PLAN SHOULD BE USED AS A GENERAL OUTLINE FOR GUIDANCE ONLY AND DOES NOT CONSTITUTE IN WHOLE OR IN PART AN OFFER OR CONTRACT. ANY INTENDING PURCHASER OR LESSEE SHOULD SATISFY THEMSELVES BY INSPECTION, SEARCHES, ENQUIRIES AND FULL SURVEY AS TO THE CORRECTNESS OF EACH STATEMENT. ANY AREAS, MEASUREMENTS OR DISTANCES QUOTED ARE APPROXIMATE AND SHOULD NOT BE USED TO VALUE A PROPERTY OR BE THE BASIS OF ANY SALE OR LET.

