



Tainters Brook, Uckfield

East Sussex TN22 1UQ

£550,000

**MANSELL
McTAGGART**
Trusted since 1947

Tainters Brook

Uckfield

A beautifully positioned and immaculately maintained 4/5 bedroom, 2 bath/shower room detached family home boasting a stunning outlook across the neighbouring countryside with versatile downstairs accommodation, an integral garage, large driveway and a generous secluded garden.

This spacious family home has been beautifully maintained with UPVC double glazed windows, new guttering and recently upgraded UPVC soffits and fascias and enjoys a delightful position at the edge of this popular family development. Overlooking the adjacent fields the property offers beautiful far reaching views as well as access to countryside walks and benefits from, in brief, on the ground floor; a useful entrance porch providing access to the spacious entrance hall with an understairs cupboard and downstairs cloakroom, a dual aspect living room with a gas fireplace and double doors opening to the dining room, the dining room has patio doors giving access to the outside seating terrace and a door into the kitchen breakfast room which offers a range of matching units to eye and base level, a generous dining area, access to the utility room which in turn provides an external door and a door into the integral garage. Half of the double garage has been converted to provide a fifth bedroom/study/playroom.

From the entrance hall a staircase rises to the first floor offering; a main bedroom with a range of fitted wardrobes and an en-suite shower room, a second generous double bedroom with built-in wardrobes, a family bathroom and two further good size bedrooms.

Outside the very secluded rear garden is a particular feature boasting a stunning outlook across the neighbouring countryside, a seating terrace immediately adjoins the rear of the property and runs the entire length of the house, a side passage provides access to the front and two timber sheds are also available.





Tainters Brook

Uckfield

The front of the property is approached via a double width and double length driveway providing parking for several vehicles leading to an integral garage and a path in turn leads through the pretty front garden to the entrance porch.

EPC rating TBC & Council tax band F

Services: Gas fired central heating and mains drainage

Tainters Brook is a popular cul-de-sac which forms part of the ever popular Hempstead Fields development on the northern side of town accessed via Browns Lane. Uckfield town centre is within close proximity via a nearby footpath, which offers a comprehensive range of shopping and leisure facilities including a cinema, several bars/restaurants, supermarkets, a public library as well as a popular leisure centre. The town boasts a wide selection of schools for all age groups including a sixth form community college.

The nearby A272 provides swift vehicular access to Haywards Heath which offers an excellent commuter train service to London (Victoria/London Bridge both approximately 47 mins). An additional rail service can be found in nearby Uckfield and Buxted village (London Bridge approx 67 mins). The motorway network of the M23/25 is also easily accessed west of Haywards Heath at Bolney or Warninglid village.

The coastal resorts of Eastbourne and Brighton city centre are also close by as is the stunning 6,500 acre Ashdown Forest, the inspiration behind A.A Milne's Winnie The Pooh books offering numerous scenic walks and outdoor pursuits.



Uckfield, East Sussex, TN22

Approximate Gross Internal Area = 163.1 sq m / 1756 sq ft
(Including Garage)

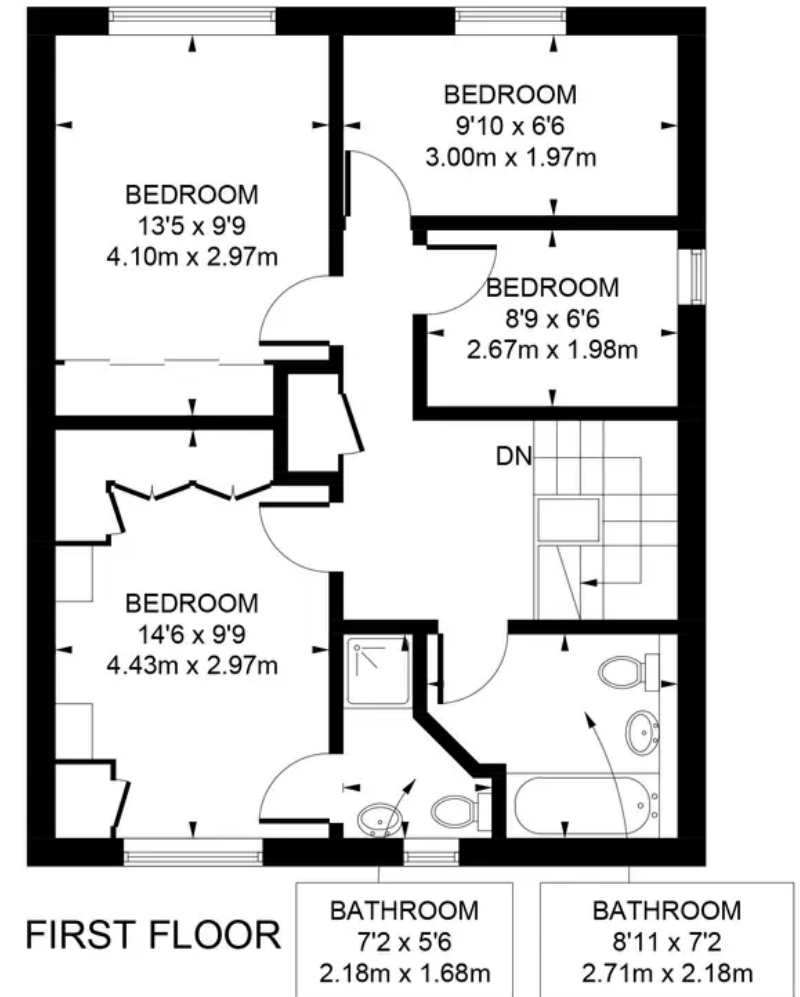
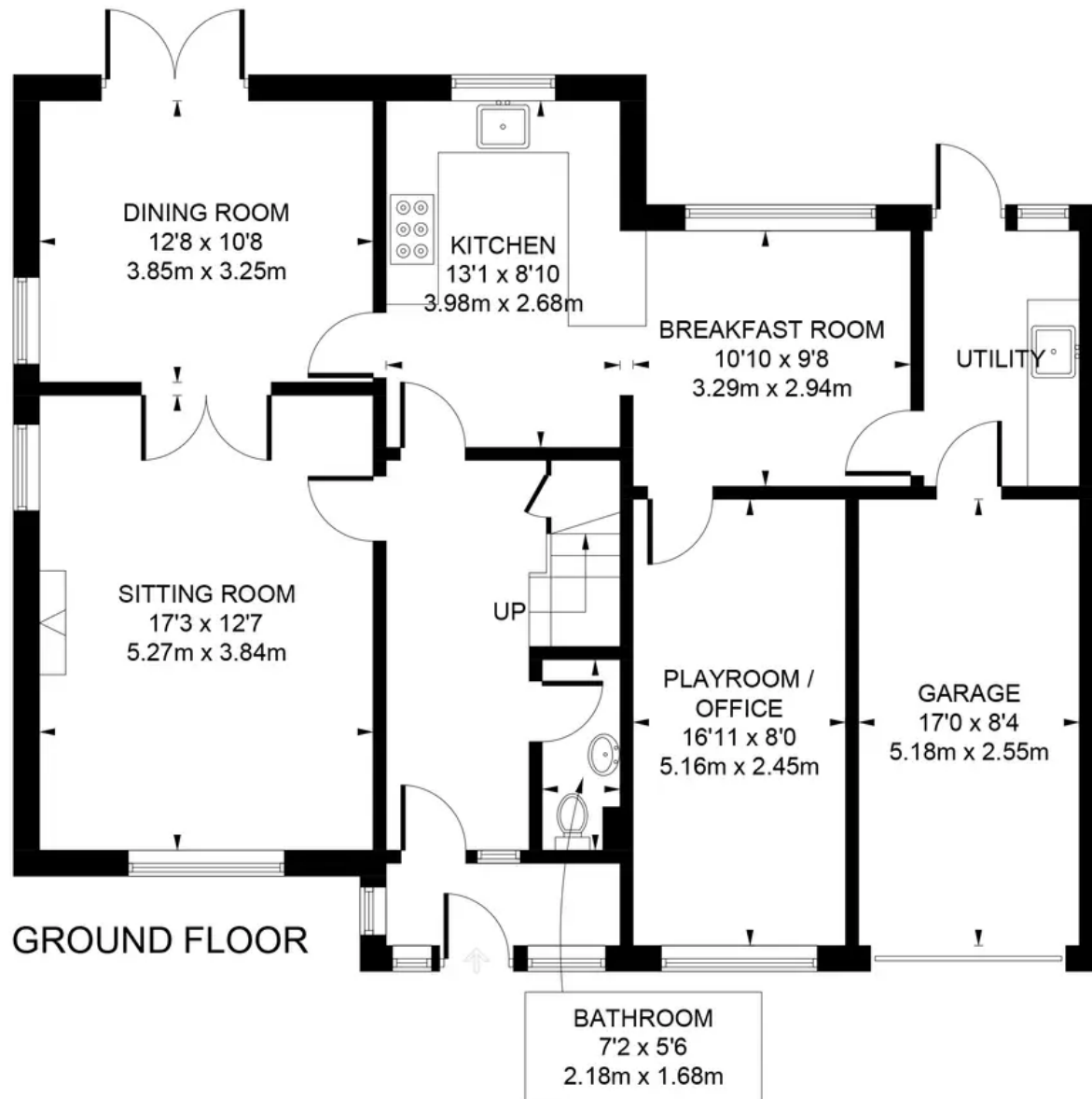


Illustration for identification purposes only, measurements
are approximate, not to scale. (ID999507)