



Robin House Firgrove Road, Cross In Hand
Heathfield

£595,000
MANSELL
McTAGGART
— Trusted since 1947 —

Robin House Firgrove Road

Cross In Hand, Heathfield

An exceptional brand new three double bedroom two bathroom detached family home situated in an elevated position enjoying stunning far reaching view towards the South Downs and the coast of Eastbourne.

Robins House is a beautifully designed and impeccably finished country home situated in a desirable Sussex village. The property boasts fine accommodation over two storeys with underfloor heating throughout, an air source heat pump and solar panels generating energy.

The property is entered via an entrance hallway with a cloak room found nearby. There is a study, an impressive open plan 19'5 x 17' kitchen/dining room fitted with a matching range of units with integrated appliances, a central island with breakfast bar and a separate utility room. The double aspect sitting room continues from the kitchen/dining room and has a set of sliding patio doors providing access to the rear garden.





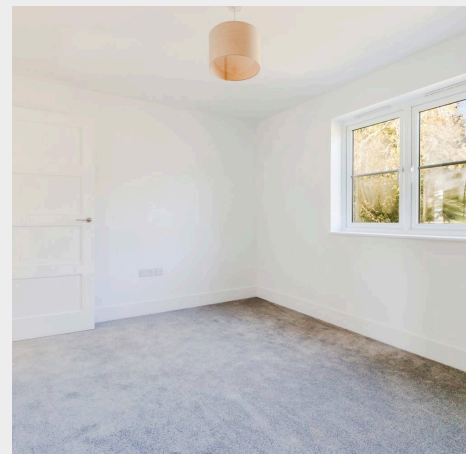
Robin House Firgrove Road

Cross In Hand, Heathfield

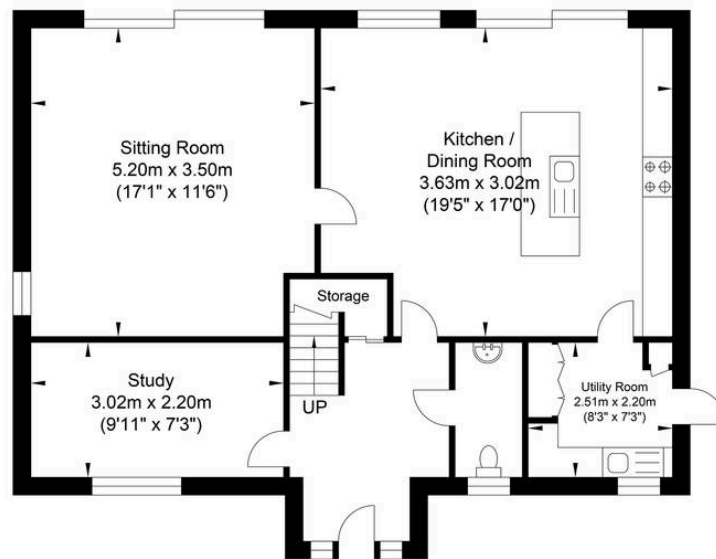
The first floor provides a spacious landing, a principal bedroom with en-suite shower room. There are two further double bedrooms and a family bathroom comprising of a white suite, an enclosed bath with built-in shower.

Outside, the front of the property is approached via a block paved driveway. The rear garden has been completely landscaped with paving adjoining the rear of the property, there is a generous patio to one side of a raised level lawn and timber shed. Enclosed in part by post and rail fencing enjoying a pleasant aspect across the neighbouring paddock.

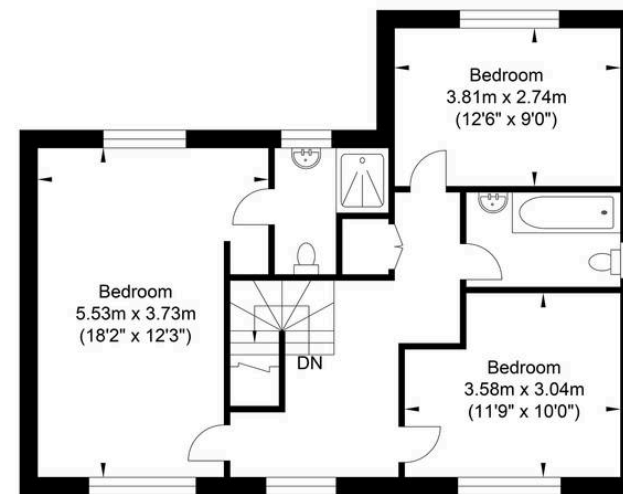
- An exceptional brand new three double bedroom detached country home enjoying far reaching view across the South Downs and the coast of Eastbourne
- Underfloor heating throughout | Air source heat pump | Solar Panels
- Beautifully built and impeccably finished
- 19'5 x 17' kitchen/dining room and a separate utility room
- Sitting room | Study
- Principal bedroom with en-suite
- Family bathroom with built-in shower
- Landscaped rear garden adjoining a neighbouring paddock



Robins House



Ground Floor
Approximate Floor Area
895.88 sq ft
(83.23 sq m)



First Floor
Approximate Floor Area
665.31 sq ft
(61.81 sq m)

Approximate Gross Internal Area = 145.04 sq m / 1561.19 sq ft
Illustration for identification purposes only, measurements are approximate, not to scale.

Mansell McTaggart Uckfield

Mansell McTaggart, 204-206 High Street – TN22 1RD

01825 760770

uf@mansellmctaggart.co.uk

www.mansellmctaggart.co.uk/branch/uckfield

Consumer Protection from Unfair Trading Regulations 2008 We have not tested any apparatus, equipment, fixtures, fittings or services and so cannot verify that they are in working order or fit for purpose. You are advised to obtain verification from your solicitor or surveyor. References to the tenure of a property are based on information supplied by the seller. We have not had sight of the title documents and a buyer is advised to obtain verification from their solicitor. Items shown in photographs are not included unless specifically mentioned within the sales particulars, but may be available by separate negotiation.