



Campfield Rough, Lane off of main rd, Duddleswell, TN22 3JN

£5,200 pcm

**MANSELL
McTAGGART**
Trusted since 1947

Campfield Rough House, Lane off of main rd

Duddleswell, Uckfield

FAMILY LET ONLY. A magnificent unfurnished 4 bedroom 2 bathroom detached country home with a grass tennis court, double garage, and detached home office/studio with power & light all within 2.5 acres of parklike grounds situated in an enviable position in the Ashdown Forest. Available September.

- Grass tennis court
- Kitchen/breakfast room
- Dining room
- A magnificent 4 bedroom detached country home set within the Ashdown Forest
- 2.5 acres of parklike grounds
- Principal bedroom with en-suite
- Drawing room with Edwardian carved oak panel fireplace
- Double Garage
- Separate detached office/studio





Campfield Rough House, Lane off of main rd

Duddleswell, Uckfield

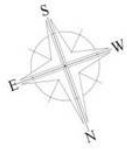
FAMILY LET ONLY. A magnificent Unfurnished (white goods only) 4 bedroom 2 bathroom detached country home, grass tennis court ,Double garage Detached Home office/studio with power & light all within 2.5 acres of parklike grounds situated in an enviable position in the Ashdown Forest. (Gardener services will be included in the rent).

Campfield Rough lies in a beautiful and completely secluded position, believed to have been built in 1840 and significantly enlarged in 1911. The property has been much improved by the current owners and boasts impressive Edwardian carved panelled features. The gardens and grounds host a number of mature trees as well as several types of Acer, a Pieris, Gingko, Eucryphia and Eucalyptus. Within the grounds is the grass tennis court.

The property is entered via a central hallway with a cloakroom and a double aspect study. The drawing room is a distinguishing feature of the property having an imposing carved panelled fireplace with an attractive bay window enjoying a fine aspect of the gardens. The dining room has similar features and a tile slate floor which continues throughout the ground floor. The kitchen/breakfast room is made up by a matching range of oak units with granite work surfaces, integrated appliances and halogen six ring range.



- Grass tennis court
- Kitchen/breakfast room



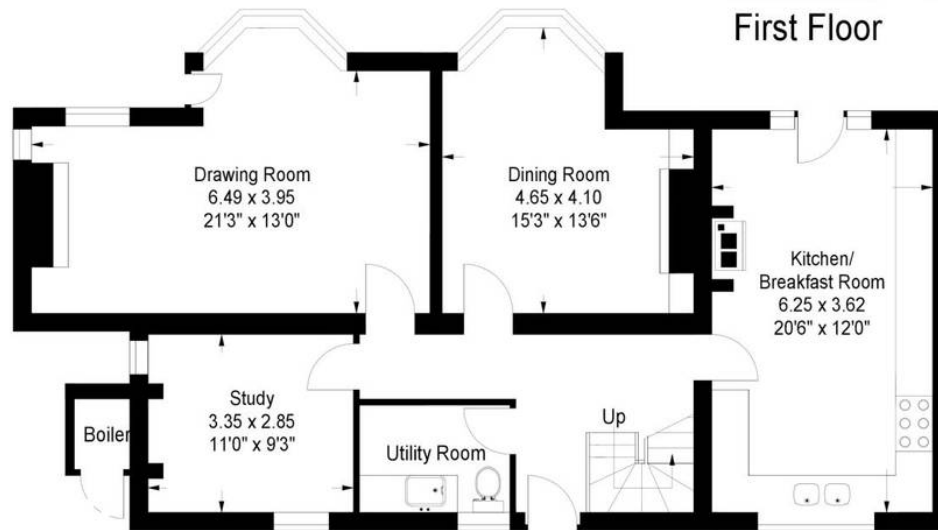
Campfield Rough

Approximate
Gross Internal Floor Area
House: 189sq.m. or 2034sq.ft.
Studio: 32sq.m. or 345sq.ft.

Floor plans prepared to provide a layout
and location of the accommodation,
and for illustrative purposes only.



First Floor



Ground Floor



Mansell McTaggart Uckfield

Mansell McTaggart, 204-206 High Street - TN22 1RD

01825 760770

uf@mansellmctaggart.co.uk

www.mansellmctaggart.co.uk/branch/uckfield

Consumer Protection from Unfair Trading Regulations 2008 We have not tested any apparatus, equipment, fixtures, fittings or services and so cannot verify that they are in working order or fit for purpose. You are advised to obtain verification from your solicitor or surveyor. References to the tenure of a property are based on information supplied by the seller. We have not had sight of the title documents and a buyer is advised to obtain verification from their solicitor. Items shown in photographs are not included unless specifically mentioned within the sales particulars, but may be available by separate negotiation.