



13 Brome Grove, Ridgewood

Uckfield, East Sussex, TN22 5FU

£595,000

**MANSELL
McTAGGART**
Trusted since 1947

13 Brome Grove

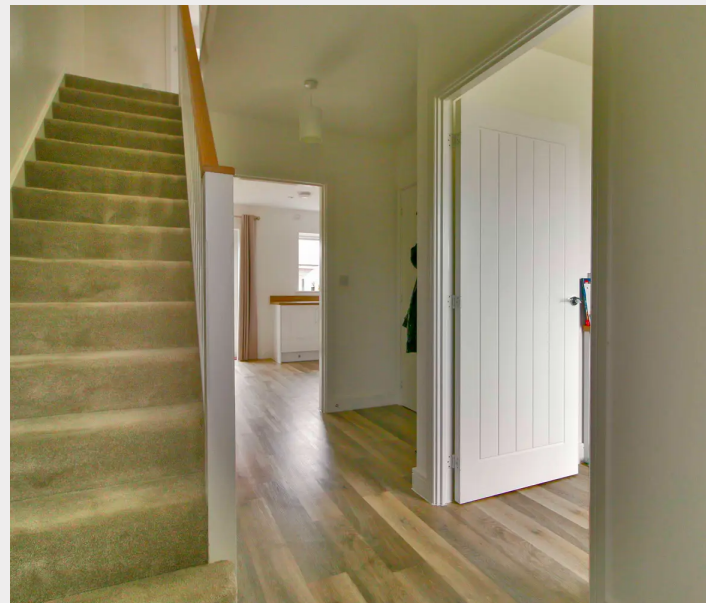
Ridgewood, Uckfield

A modern 5 bedroom 3 bathroom detached family home occupying a pleasant corner plot with a double width driveway and detached double garage. Forming part of the newly developed Ridgewood Place, enjoying a pleasant aspect of the nature reserve.

This impressive home was contracted by Taylor Wimpey in 2021 to The Garrton design and most recently the current owners have added air conditioning units to most rooms. The accommodation is arranged over 3 storeys, boasting spacious accommodation for a large family with 5 double bedrooms. The double garage is a particular feature of the property which currently serves as a well equipment gym.

The property is entered via a central hallway with a cloak/utility room found nearby and study/family room at the front. The sitting room is double aspect and has a set of double doors leading to the dining area in the kitchen. The kitchen/dining room is a generous size, made up to one side with a matching range of units to eye and base level with integrated appliances. There are 2 sets of French doors that lead out to the rear garden.

The first floor provides, three bedrooms and a family bathroom which comprises of an enclosed bathroom with shower over. The principal bedroom has a dressing area which then continues through to an en-suite shower room. The second floor provides 2 further bedrooms and a shower room.





13 Brome Grove

Ridgewood, Uckfield

Outside, the front of the property is approached via a central pathway with a lawn to either side. The driveway is found to the rear of the property and in turn leads to the detached garage. The rear garden is mainly laid to lawn with a paved seating terrace. The whole enclosed by an attractive brick wall. There is a personal door into the garage and a gate giving access to the driveway.

EPC B

Council Tax band: F

GFCH

Heat pump for air conditioning

Mains drainage

Tenure: Freehold

Maintenance charge £221.98

Brome Grove forms part of a brand new development constructed by Taylor Wimpey situated on the southern outskirts of Ridgewood. The development will benefit from a new primary school, areas of public open space, children's play areas and new leisure and community facilities. There are numerous playing fields and public recreation areas nearby as well as the local Ridgewood post office/shop and the Highlands Pub/Restaurant.



Brome Grove, Uckfield, East Sussex, TN22

Approximate Gross Internal Area = 166.1 sq m / 1787 sq ft

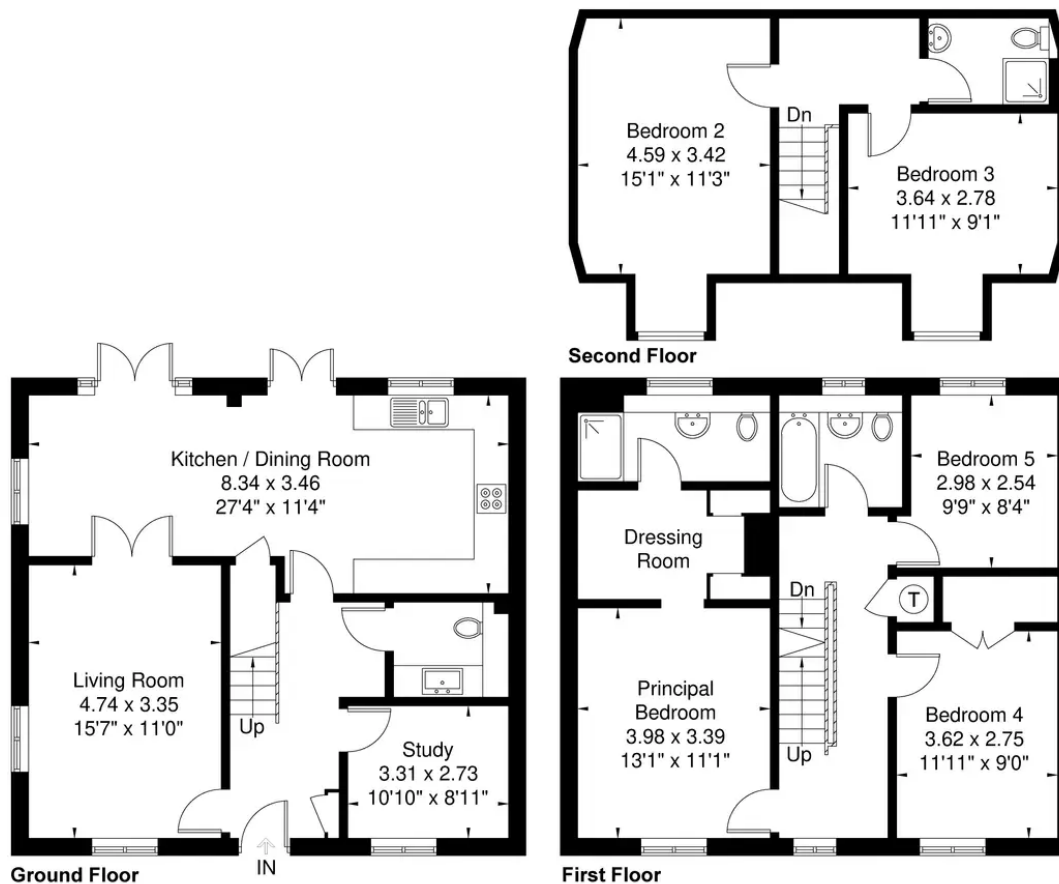


Illustration for identification Purposes only, measurements are approximate, not for scale

Mansell McTaggart Uckfield

Mansell McTaggart, 204-206 High Street - TN22 1RD

01825 760770

uf@mansellmctaggart.co.uk

www.mansellmctaggart.co.uk/branch/uckfield

Consumer Protection from Unfair Trading Regulations 2008 We have not tested any apparatus, equipment, fixtures, fittings or services and so cannot verify that they are in working order or fit for purpose. You are advised to obtain verification from your solicitor or surveyor. References to the tenure of a property are based on information supplied by the seller. We have not had sight of the title documents and a buyer is advised to obtain verification from their solicitor. Items shown in photographs are not included unless specifically mentioned within the sales particulars, but may be available by separate negotiation.