



**Taurus House, Union Road, Bristol,
BS1**

Offers in Excess of £210,000

- City Centre one bed
- Modern finish
- Allocated parking space
- Excellent rental yield
- Communal roof terrace
- Ideal investment



Taurus House, Union Road, Bristol, BS1

Contemporary, modern and good sized one bed apartment a stones throw from Castle Park and the bustling city centre. Apartment benefits from a high standard finish, comes with parking and is an ideal investment currently achieving a 6% rental yield.

Kitchen/Diner

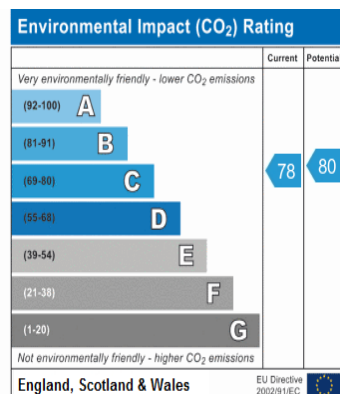
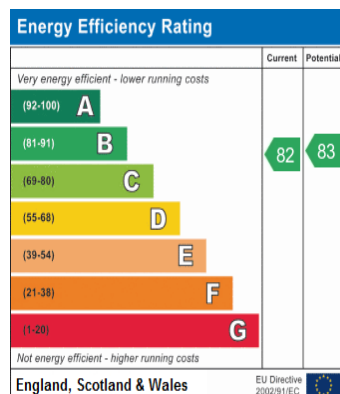
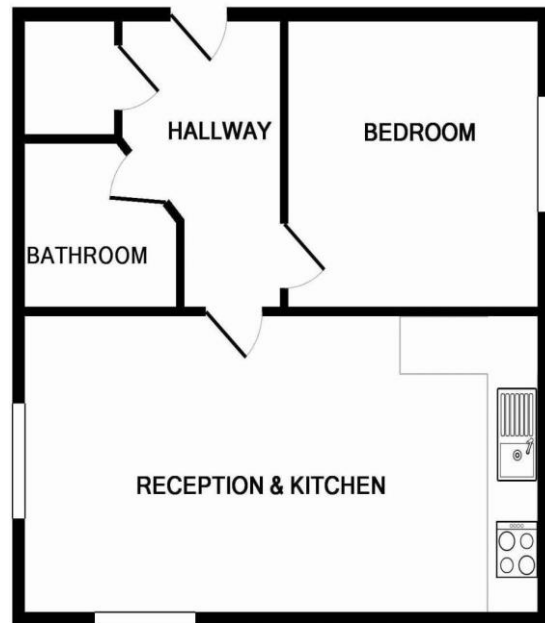
Open plan kitchen and living area
16' 0" x 15' 0" (4.87m x 4.57m)

Bedroom

10' 0" x 10' 0" (3.05m x 3.05m)

Bathroom

7' 5" x 8' 0" (2.26m x 2.44m)



46 College Green, The Harbourside, Bristol BS1 5SH

0117 928 1900

info@harboursidepropertygroup.co.uk