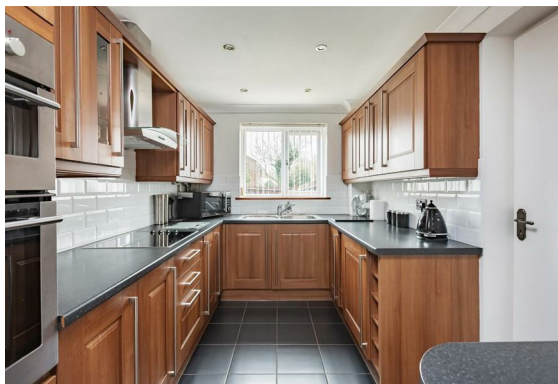




11 Olivers Mill New Ash Green

- Sought After Location
- Link/End of Staggered Terrace House
- Three Bedrooms
- Thru Lounge/Diner
- Fitted Kitchen
- Attached Garage with Driveway
- West Facing Rear Garden

£395,000





Located in a highly sought after neighbourhood a lovely well presented link/end of terrace three bedroom house. The property features: gas central heating, double glazing throughout, west facing rear garden, boasting an attached garage with driveway for a couple of cars.

A delightful house which has been maintained to a high standard, the accommodation includes: spacious entrance hall, spacious through lounge/diner, fitted kitchen with door leading into attached garage, three bedrooms and bathroom, lovely west facing rear garden.

New Ash Green benefits from local facilities which include local shops, doctor and dental surgeries, health clinic, primary school and nurseries, access to grammar and secondary schools, public library. Bus services to main line railway station at Longfield offering services to London as well as a commuter coach service to London. There are road links from this area giving access to A2/M2, A20/M20, M25 and Dartford Tunnel. The major features are the close proximity to Bluewater Shopping Complex and Ebbsfleet International Station with high speed link to Paris and St Pancras International Station.

Tenure: Freehold

Council Tax Band: D



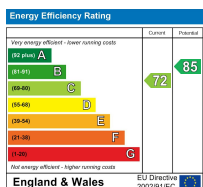
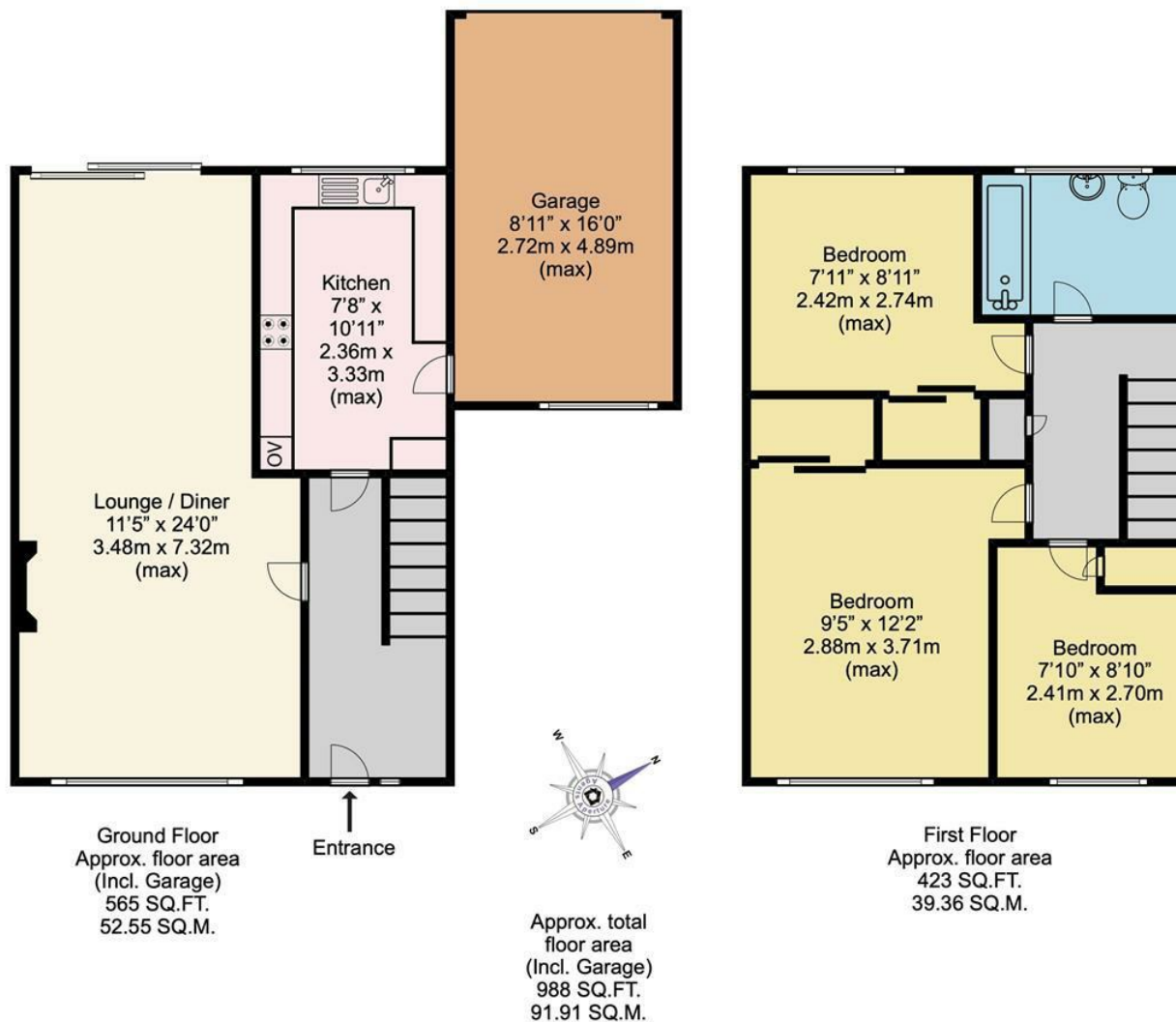


Fixtures and fittings by arrangement other than those mentioned.

Residents Society Fees and Village Association Fees apply to properties in New Ash Green, please ask for further information or contact New Ash Green Village Association directly for figures.







Appliances and services are untested. Dimensions are approximate and floorplans are not to scale. Fixtures and fittings, planning and alterations, lease details if applicable, should all be verified legally.

Open: Monday-Friday 9am-5.30pm
Saturday 9am-5pm

**4 The Row, New Ash Green
Kent DA3 8JG**

**1 The Parade, Wrotham Road
Meopham, Kent DA13 0JL**

01474 815811 / 871555

info@hartleyestates.com
www.hartleyestates.com

