



26 Chapel Wood New Ash Green

- Located on the Very Edge of the Village
- Mid Terrace Two Bedroom House
- Kitchen
- Lounge/Diner
- Bathroom
- Rear Garden
- Garage
- End of Chain

£270,000

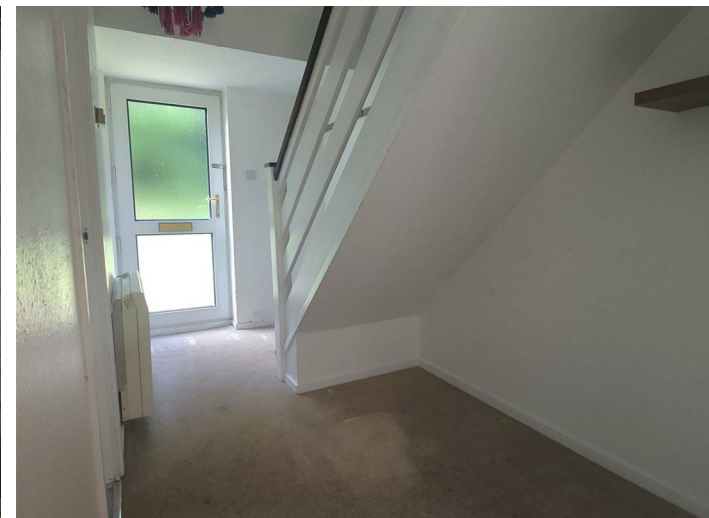




Excellent opportunity for a first time purchase or investment, a mid terrace two bedroom house located on the very edge of the village.

Located on the very edge of the village a mid terrace house offering the following accommodation: entrance hall, kitchen to front, lounge/diner to rear overlooking rear garden, two double bedrooms and bathroom, garage in nearby block. The property has electric storage heaters and double glazing. This property also benefits from having no onward chain.

New Ash Green benefits from local facilities which include local shops, doctor and dental surgeries, health clinic, primary school and nurseries, access to grammar and secondary schools, public library. Bus services to main line railway station at Longfield offering services to London. There are road links from this area giving access to A2/M2, A20/M20, M25 and Dartford Tunnel. The major features are the close proximity to Bluewater Shopping Complex and Ebbsfleet International Station with high speed link to Paris and St Pancras International Station.





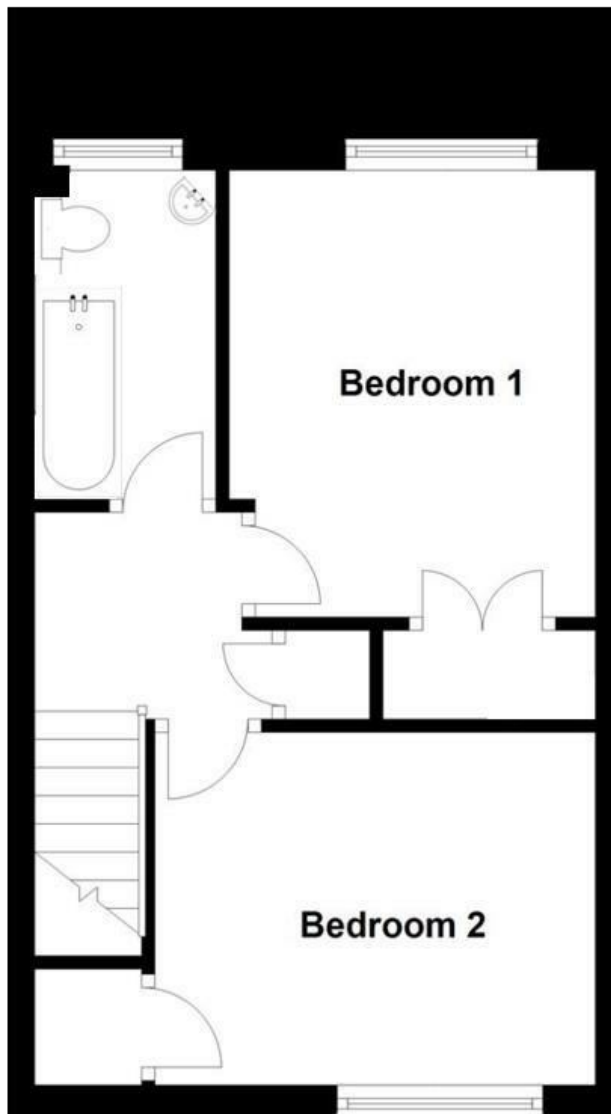
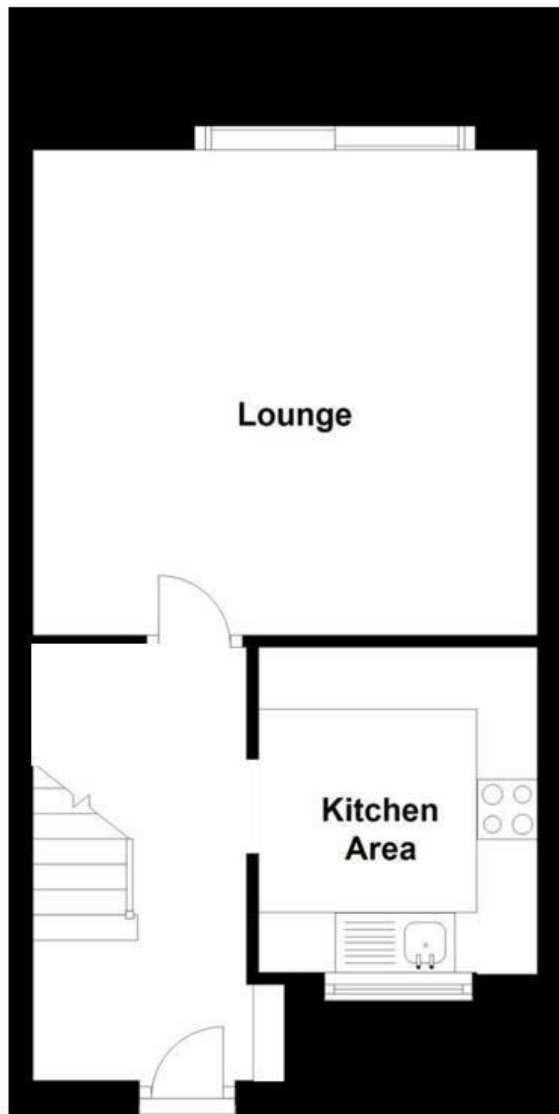
Tenure: Freehold

Council Tax Band: C

Fixtures and fittings by arrangement other than those mentioned.

Residents Society Fees and Village Association Fees apply to properties in New Ash Green, please ask for further information or contact New Ash Green Village Association directly for figures.





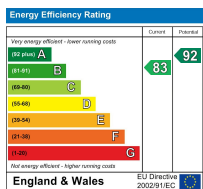
Open: Monday-Friday 9am-5.30pm
Saturday 9am-5pm

**4 The Row, New Ash Green
Kent DA3 8JG**

**1 The Parade, Wrotham Road
Meopham, Kent DA13 0JL**

01474 815811 / 871555

info@hartleyestates.com
www.hartleyestates.com



Appliances and services are untested. Dimensions are approximate and floorplans are not to scale.
Fixtures and fittings, planning and alterations, lease details if applicable, should all be verified legally.