



28 Seven Acres New Ash Green

- Rarely Available
- Attractive Four Bedroom Detached House
- Sought After Location
- Two Reception Rooms
- Conservatory
- Fitted Kitchen
- Secluded South Facing Rear Garden
- Attached Garage & Driveway

£535,000





Very rarely available for sale! This attractive tiled hung detached four bedroom family house located in a cul-de-sac position on the highly sought after neighbourhood of Seven Acres. The property offers excellent well presented living accommodation. Extra features include gas central heating, double glazing throughout, attached garage and driveway.

Step through the front door to a reception hallway with downstairs cloakroom, fitted modern kitchen, separate dining room, lovely bright and spacious lounge, conservatory, four good size bedrooms, a large bathroom with bath and separate shower unit.

The south facing rear garden are secluded and boasts a outside cabin, there is also access to the attached garage with pitched roof and power and light plus driveway to the front.

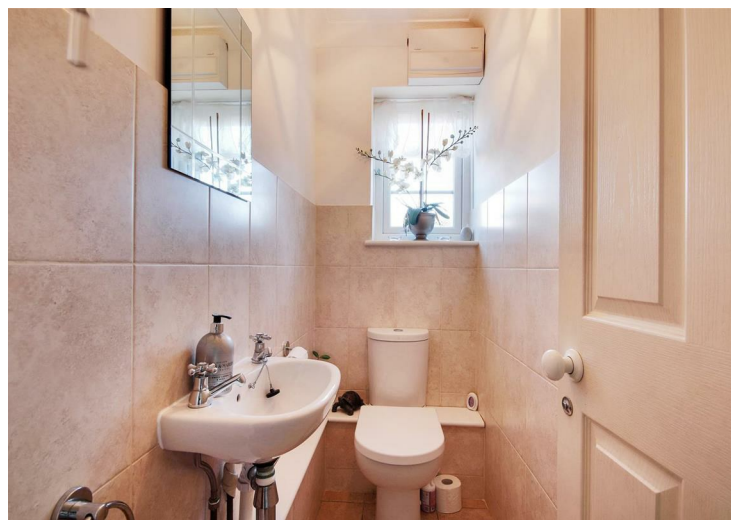
Tenure: Freehold

Council Tax Band: E

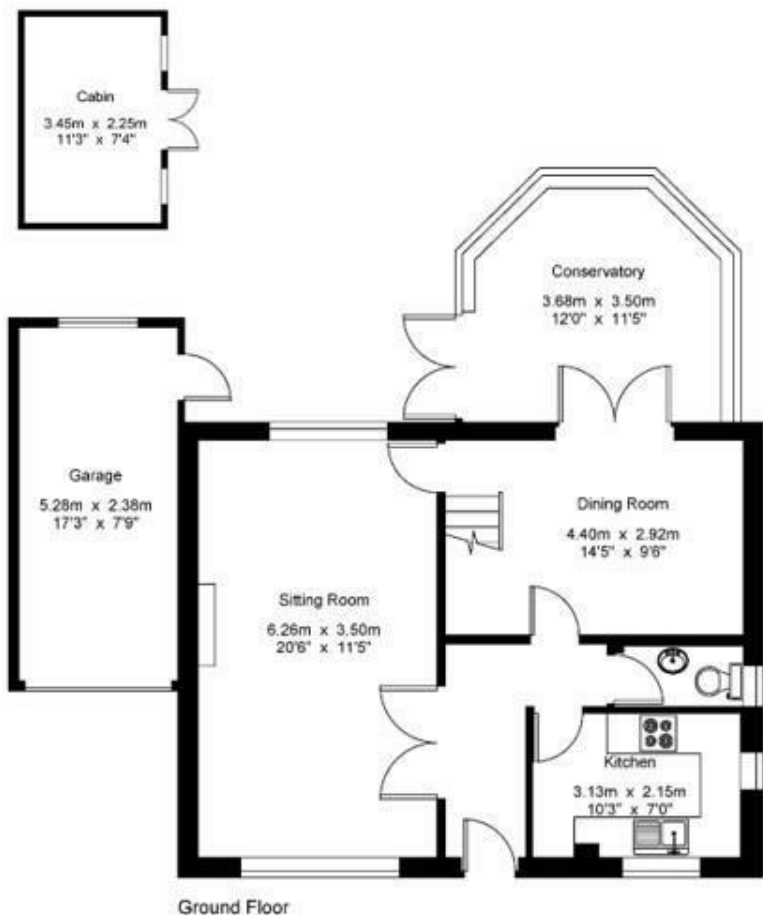
Fixtures and fittings by arrangement other than those mentioned.

Residents Society Fees and Village Association Fees apply to properties in New Ash Green, please ask for further information or contact New Ash Green Village Association directly for figures.

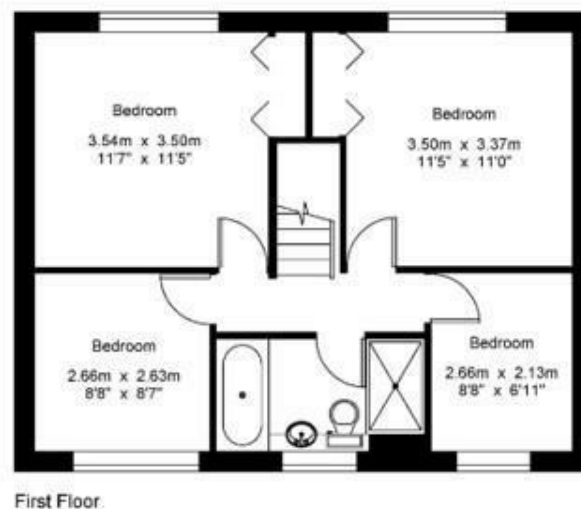








Gross Internal Area : 128.0 sq.m (1375 sq.ft.)
(Including Garage)



For Identification Purposes Only.
© 2025 Trueplan (UK) Limited (51892) 614 881



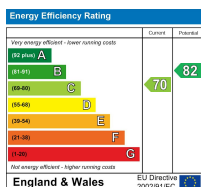
Open: Monday-Friday 9am-5.30pm
Saturday 9am-5pm

**4 The Row, New Ash Green
Kent DA3 8JG**

**1 The Parade, Wrotham Road
Meopham, Kent DA13 0JL**

01474 815811 / 871555

info@hartleyestates.com
www.hartleyestates.com



Appliances and services are untested. Dimensions are approximate and floorplans are not to scale.
Fixtures and fittings, planning and alterations, lease details if applicable, should all be verified legally.