



153 Knights Croft New Ash Green

- Lovely Location
- End of Terrace Three Bedroom House
- Spacious Lounge
- Study/Bedroom Four
- Dining Room
- Fitted Kitchen
- Rear Garden
- Garage

£375,000





Located on the sought after neighbourhood of Knights Croft on the very edge of the village a end of terrace three/four bedroom house. Built by the renowned architect Eric Lyons (Span Ltd) the property offers lovely light and airy living accommodation.

The property has gas warm air central heating, double glazing throughout, garage in nearby block to rear.

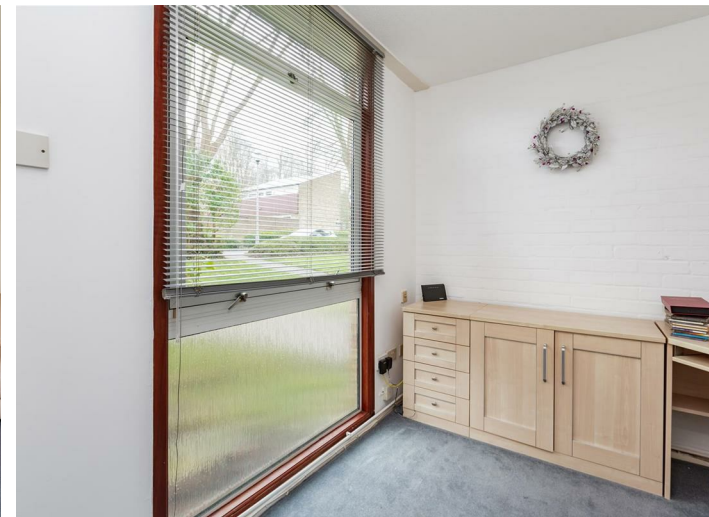
Lovely open living accommodation including: entrance porch, downstairs cloakroom, spacious lounge with full double glazing sliding patio doors overlooking rear garden, dining room also overlooking rear garden, good size fitted kitchen, study/bedroom four, upstairs there are three good size bedrooms, main bedroom with cathedral ceiling, also there is a shower room.

Tenure: Freehold

Council Tax Band: D

Fixtures and fittings by arrangement other than those mentioned.

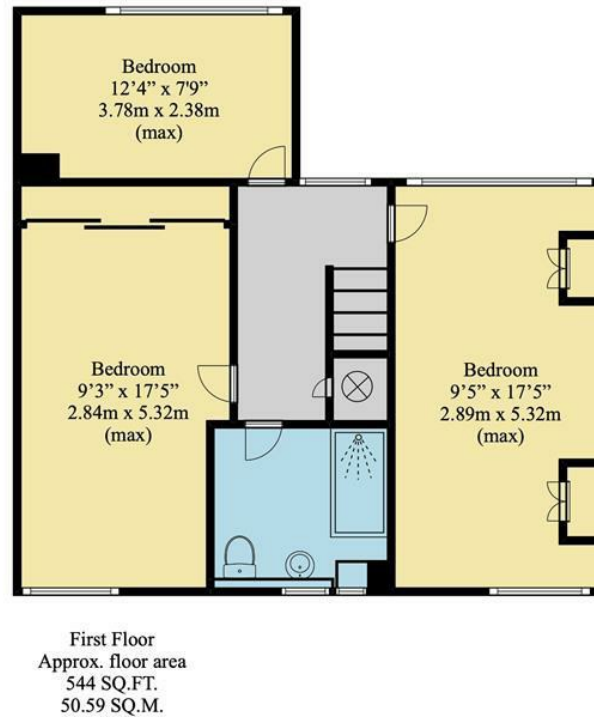
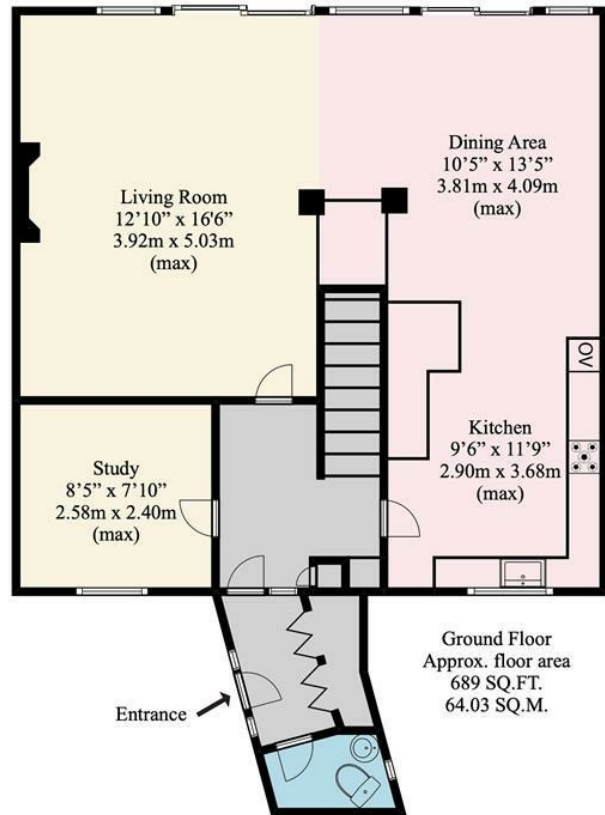
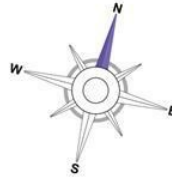
Residents Society Fees and Village Association Fees apply to properties in New Ash Green, please ask for further information or contact New Ash Green Village Association directly for figures.





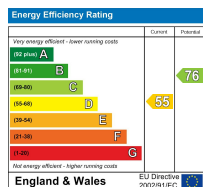


Approx. total
floor area
1,233 SQ.FT.
114.62 SQ.M.



Disclaimer

This floorplan is for illustrative purposes only. We do not accept responsibility for any errors or omissions. The depicted appliances have not been tested, and their operability or efficiency is not guaranteed. Measurements are approximate and not to scale and not precise, and may have been taken from the widest area including wardrobes and storage spaces. Garages and outbuildings may not be represented in their actual location in relation to the property. Buyers are advised to take their own measurements and compass reading. Internal measurements and total areas should be verified, as their accuracy is not guaranteed.



Appliances and services are untested. Dimensions are approximate and floorplans are not to scale. Fixtures and fittings, planning and alterations, lease details if applicable, should all be verified legally.

Open: Monday-Friday 9am-5.30pm
Saturday 9am-5pm

**4 The Row, New Ash Green
Kent DA3 8JG**

**1 The Parade, Wrotham Road
Meopham, Kent DA13 0JL**

01474 815811 / 871555

info@hartleyestates.com
www.hartleyestates.com

