



24 Evenden Road Meopham

- End of Terrace House
- Three Bedrooms
- Spacious Lounge
- Good Size Fitted Kitchen/Breakfast Room
- Upstairs Shower Room
- Downstairs Cloakroom
- Rear Garden
- Integral Garage & Drive
- No Onward Chain
- Great Potential

£430,000





Excellent location in the sought after village of Meopham, end of terrace three bedroom house. The property offers great potential with scope for more improvements. The property has no onward chain.

The property does require some updating and is set in a popular road within Meopham and is walking distance from the ever popular Meopham Community Academy along with the Meopham mainline railway station.

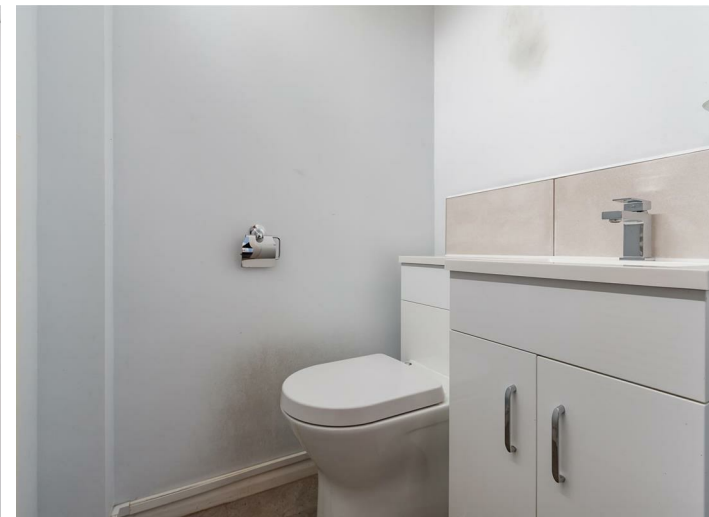
This end of terrace house offers a spacious lounge, good size fitted kitchen/breakfast room and cloakroom downstairs. Upstairs are three bedrooms and a shower room.

The property also boasts a good size rear garden, integral garage and driveway.

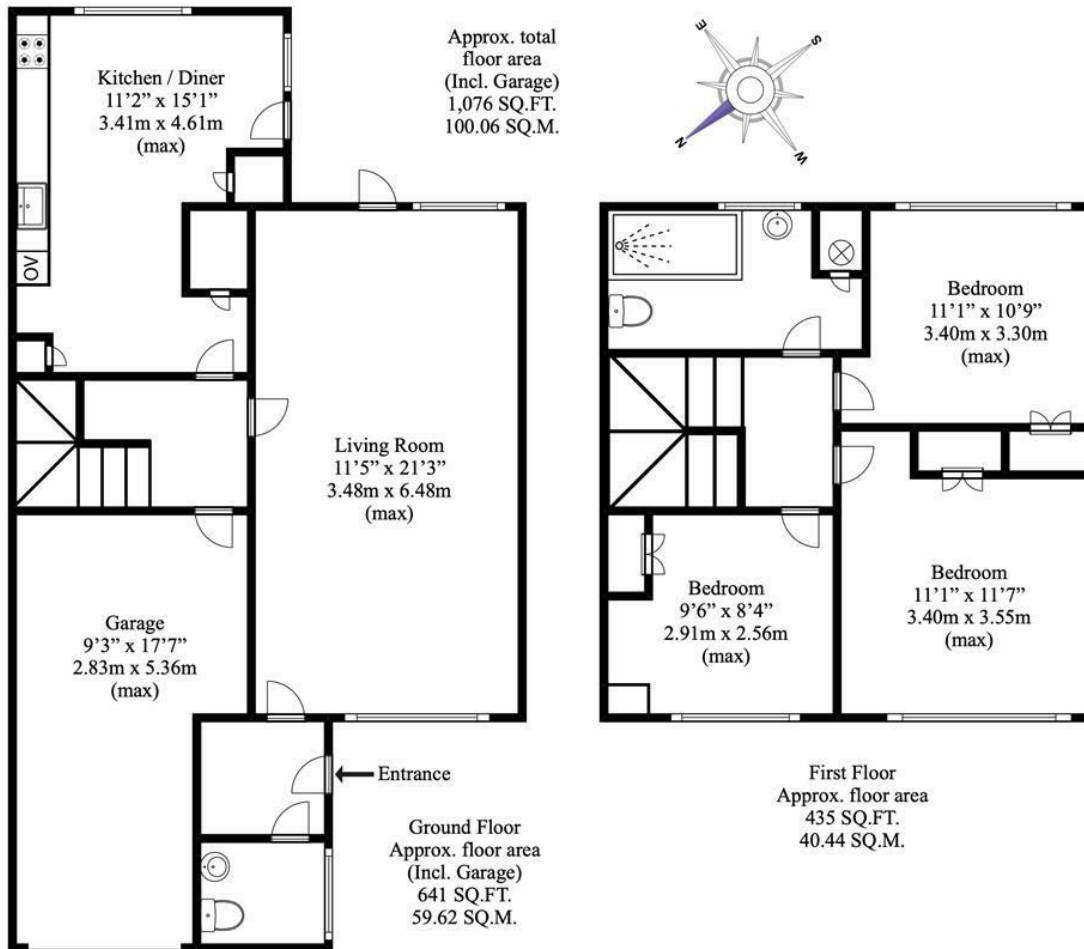
Tenure: Freehold

Council Tax Band: D

Fixtures and fittings by arrangement other than those mentioned.

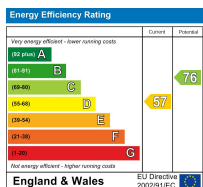






Disclaimer

This floorplan is for illustrative purposes only. We do not accept responsibility for any errors or omissions. The depicted appliances have not been tested, and their operability or efficiency is not guaranteed. Measurements are approximate and not to scale and not precise, and may have been taken from the widest area including wardrobes and storage spaces. Garages and outbuildings may not be represented in their actual location in relation to the property. Buyers are advised to take their own measurements and compass reading. Internal measurements and total areas should be verified, as their accuracy is not guaranteed.



Appliances and services are untested. Dimensions are approximate and floorplans are not to scale. Fixtures and fittings, planning and alterations, lease details if applicable, should all be verified legally.

Open: Monday-Friday 9am-5.30pm
 Saturday 9am-5pm

**4 The Row, New Ash Green
 Kent DA3 8JG**

**1 The Parade, Wrotham Road
 Meopham, Kent DA13 0JL**

01474 815811 / 871555

info@hartleyestates.com
 www.hartleyestates.com

