



# The Ridings London Road West Kingsdown

- Spacious Detached Chalet Bungalow
- Five Bedrooms
- Well Presented Throughout
- Three Reception Rooms
- Two Bathrooms
- Tandem Garage
- Large Driveway
- Viewing Highly Recommended

Price Range  
£685,000-£695,000





PRICE RANGE £685,000-£695,000 A fabulous well presented detached five bedroom chalet bungalow offering excellent family living accommodation, located in a secluded position behind a gated entrance and with plenty of parking/driveway plus garaging.

A well presented detached spacious versatile chalet bungalow, beautifully updated by the current owners. Accommodation includes: entrance hallway, large family room leading to fully fitted kitchen, utility room and rear lobby, living room, study, two ground floor bedrooms one with ensuite. Upstairs there are three further bedrooms and a beautiful laid out spacious bathroom.

Boasting large driveway and tandem garage.

The property is located in the village of West Kingsdown which falls within the Sevenoaks district. The property is well connected to village amenities to include Co-Op and takeaway outlets, a village library and a primary school. A further selection of reputable primary and secondary schools are also within easy reach, including the highly selective, coeducational private school at Sevenoaks.

Road links to the M20 and M25 are superb, whilst train stations at Swanley, Borough Green, Eynsford and Longfield are within close proximity. These offer services to London Bridge, Charing Cross and London Victoria, as well as the Kent Coastline.

### ENTRANCE HALL





**LOUNGE**

**STUDY**

**FULLY FITTED KITCHEN/FAMILY ROOM**

16'9" x 14'11" (5.13 x 4.55)

**REAR LOBBY**

**UTILITY ROOM/CLOAKROOM**

6'5" x 6'3" (1.96 x 1.93)

**BEDROOM FOUR**

10'11" x 11'1" (3.35 x 3.4)

**ENSUITE/SHOWER ROOM**

**BEDROOM FIVE**

11'8" x 11'1" (3.58 x 3.4)

**FIRST FLOOR LANDING**

**MAIN BEDROOM**

15'10" x 12'1" (4.85 x 3.7)

**BEDROOM**

15'10" x 11'8" (4.85 x 3.58)

**BEDROOM**

11'9" x 7'4" (3.6 x 2.26)

**FAMILY BATHROOM**

10'8" x 8'8" (3.25m x 2.64m)





### **FRONT GARDEN**

Access via cast iron double gates, security lights.

### **DRIVEWAY**

Block paved to both front and side with parking for several cars, double garage leading to further parking and garage.

### **DETACHED TANDEM GARAGE**

27'3" x 8'6" (8.31m x 2.59m)

Up and over door, power and light.

### **REAR GARDEN**

Patio area, laid to lawn, outside tap, side access.

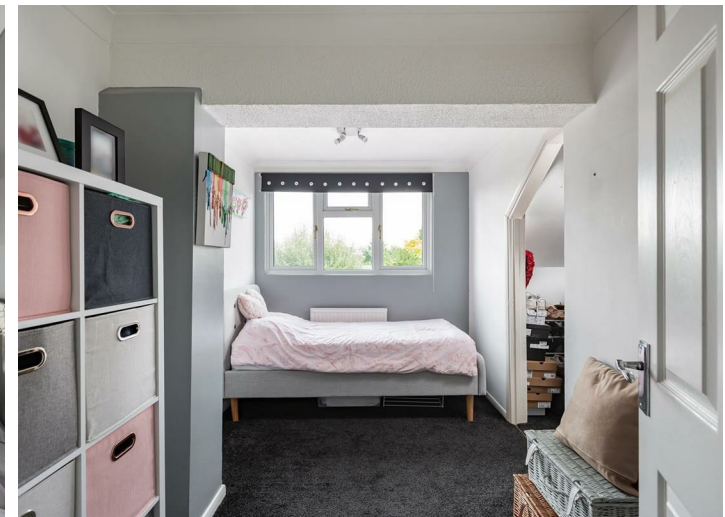
### **Base Freehold**

Tenure: Freehold

Council Tax Band: F

Fixtures and fittings by arrangement other than those mentioned.





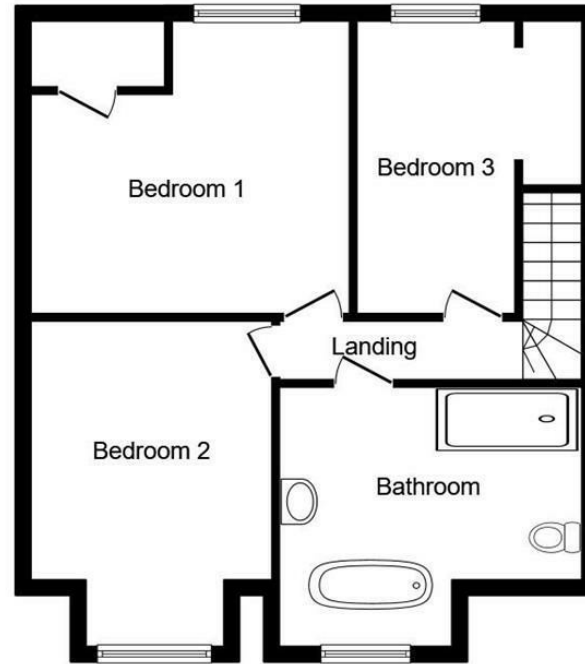




The Ratings

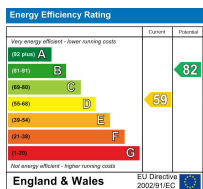


Ground Floor



First Floor

This floor plan is for illustrative purposes only. It is not drawn to scale. Any measurements, floor areas (including any total floor area), openings and orientations are approximate. No details are guaranteed, they cannot be relied upon for any purpose and do not form any part of any agreement. No liability is taken for any error, omission or misstatement. A party must rely upon its own inspection(s). Powered by www.Propertybox.io



Appliances and services are untested. Dimensions are approximate and floorplans are not to scale. Fixtures and fittings, planning and alterations, lease details if applicable, should all be verified legally.

Open: Monday-Friday 9am-5.30pm  
Saturday 9am-5pm

4 The Row, New Ash Green  
Kent DA3 8JG

1 The Parade, Wrotham Road  
Meopham, Kent DA13 0JL

01474 815811 / 871555

info@hartleyestates.com  
www.hartleyestates.com

