



7 Burghfield Road Istead Rise

- Three Bedroom Detached Bungalow
- Requires Modernisation
- Lounge/Diner
- Kitchen
- Conservatory
- Bathroom
- Garden
- Garage
- No Onward Chain
- Lots of Potential

Offers In The
Region Of
£465,000





We are pleased to be able to offer for sale this three bedroom detached bungalow backing onto fields. The property does require modernisation and would be the perfect project for anyone looking for a property with lots of potential.

If you are looking for a property that offers loads of potential then this is the one for you. This three bedroom detached bungalow is in a favourable position backing onto open farmland.

Currently the accommodation comprises of two double bedrooms at the front of the property, a lounge/diner at the rear with a third single bedroom off of that.

A kitchen at the rear and a separate bathroom & cloakroom. There is also a conservatory off of the lounge/diner.

Outside there is a good size garden to the rear and at the front, parking for two cars on the drive along with a single garage.

The property is offered with no onward chain.





Tenure: Freehold

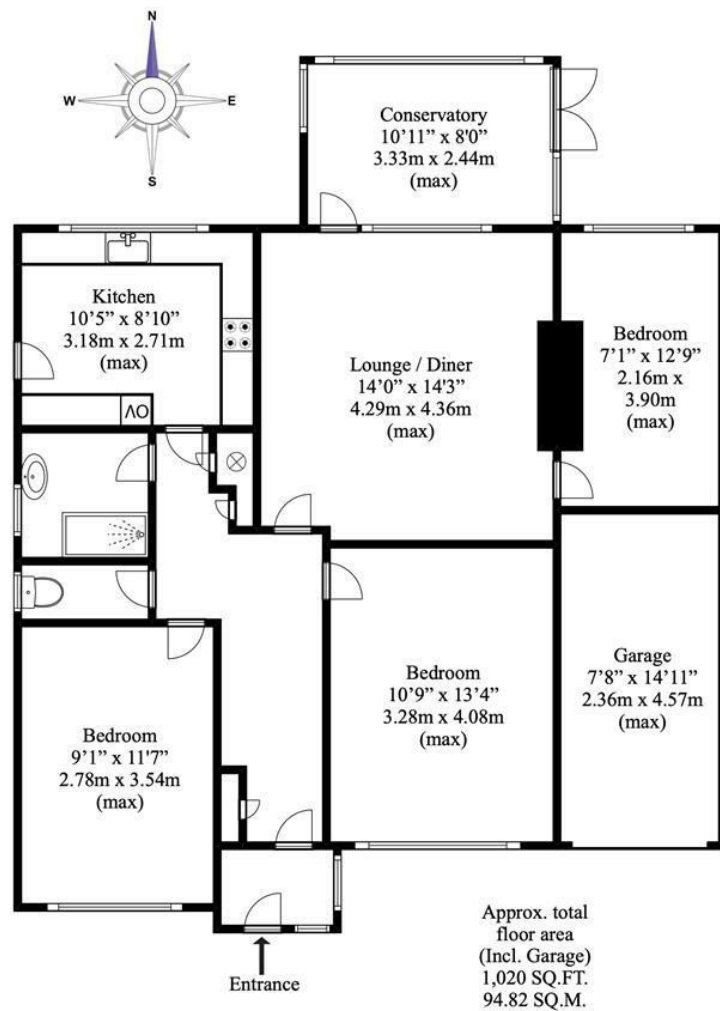
Council Tax Band: D

Fixtures and fittings by arrangement other than those mentioned.









Disclaimer

This floorplan is for illustrative purposes only. We do not accept responsibility for any errors or omissions. The depicted appliances have not been tested, and their operability or efficiency is not guaranteed. Measurements are approximate and not to scale and not precise, and may have been taken from the widest area including wardrobes and storage spaces. Garages and outbuildings may not be represented in their actual location in relation to the property. Buyers are advised to take their own measurements and compass reading. Internal measurements and total areas should be verified, as their accuracy is not guaranteed.

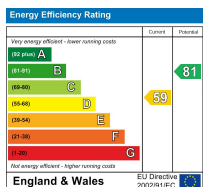
Open: Monday-Friday 9am-5.30pm
Saturday 9am-5pm

**4 The Row, New Ash Green
Kent DA3 8JG**

**1 The Parade, Wrotham Road
Meopham, Kent DA13 0JL**

01474 815811 / 871555

info@hartleyestates.com
www.hartleyestates.com



Appliances and services are untested. Dimensions are approximate and floorplans are not to scale. Fixtures and fittings, planning and alterations, lease details if applicable, should all be verified legally.