



## 6 Strand Close Meopham

- Mid Terraced House
- Two Bedrooms
- Lounge
- Dining Room
- Kitchen
- Bathroom
- Garden
- Recently Refurbished
- No Onward Chain

Offers In The  
Region Of  
£375,000







Set in the heart of Meopham this two bedroom home has recently been completely refurbished and is ready to move into with no onward chain. Early viewing is highly recommended.

The entrance porch leads into the entrance hallway with access to the lounge at the rear which overlooks the rear garden.

The kitchen at the front of the home is brand new and then provides access to the dining room at the rear.

Upstairs, the two double bedrooms provide plenty of space and the bathroom is also newly fitted.

Outside the rear garden offers the perfect place to enjoy those lazy summer days and also has a garden shed.

This home is offered without any onward chain.

Tenure: Freehold

Council Tax Band: C

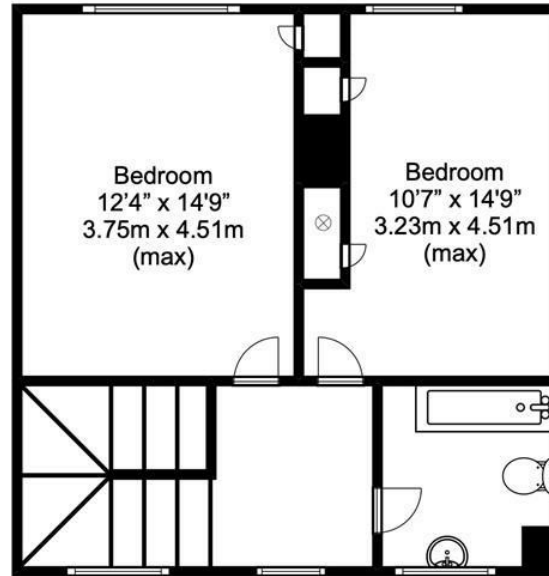
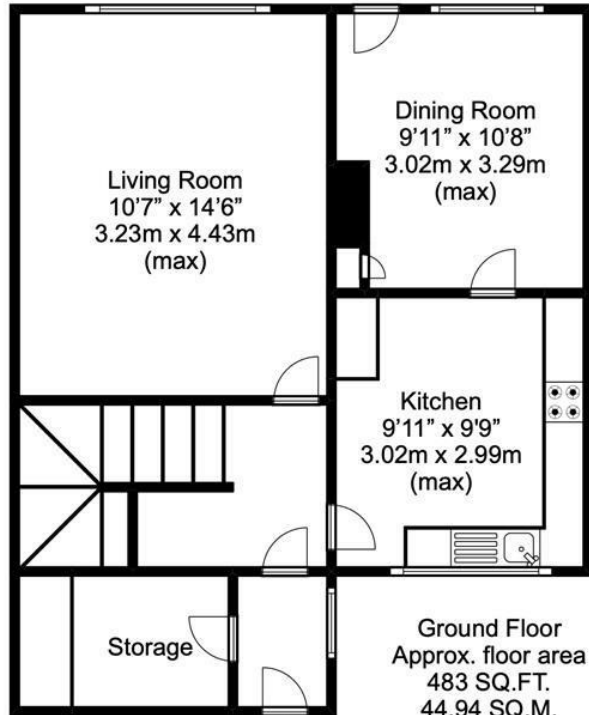
Fixtures and fittings by arrangement other than those mentioned.







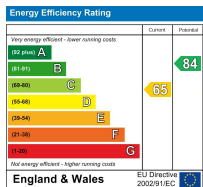
Approx. total floor area  
920 SQ.FT.  
85.51 SQ.M.



Entrance ↑

**Disclaimer**

This plan is for illustrative purposes only and no responsibility is taken for any error, omission or misstatement. The appliances shown have not been tested and no guarantee as to their operability or efficiency can be given. Measurements have been added as a guide to prospective buyers only, are not precise, not to scale, may have been taken from the widest area and may include wardrobe / cupboard space. Garages and outbuildings may not be represented in their actual location in relation to the property. Compass point, measurements and total areas should be considered inaccurate and checked as no guarantee is given to their accuracy. Buyers are strongly advised to take their own measurements and compass bearing.



Appliances and services are untested. Dimensions are approximate and floorplans are not to scale. Fixtures and fittings, planning and alterations, lease details if applicable, should all be verified legally.

Open: Monday-Friday 9am-5.30pm  
Saturday 9am-5pm

**4 The Row, New Ash Green  
Kent DA3 8JG**

**1 The Parade, Wrotham Road  
Meopham, Kent DA13 0JL**

**01474 815811 / 871555**

info@hartleyestates.com  
www.hartleyestates.com

