

PRIME ESTATES

INDEPENDENT ESTATE AGENTS

Stuarts Road, Stechford, Birmingham, B33 8UJ

£190,000



£190,000

**Stuarts Road, Stechford,
Birmingham, B33 8UJ**

- Traditional Terrace Home
- Ideal First Time Buy
- Two Double Bedrooms
- Two Reception Rooms
- Extended Kitchen With Built in Appliances
- First Floor Family Bathroom
- Front & Rear Gardens
- Early Viewing Essential
- Close to Local Schools Shops & Transport Links
- Beautifully Presented

EPC Rating

Current: C
Potential: C

Council tax band

Band = A

**** WELL PRESENTED TRADITIONAL
TERRACE HOME ** TWO RECEPTION
ROOMS ** TWO DOUBLE BEDROOMS
** GREAT LOCATION ****

This TERRACE HOME is situated in on
STUARTS ROAD, STECHFORD AND IS
AN IDEAL FIRST TIME BUYER
PROPERTY OR FOR INVESTMENT!

CALL OUR YARDLEY OFFICE ON 0121-
783-3422 FOR A VIEWING TODAY!

Accessed via a front garden and
leading to front door, accommodation
comprises: TWO RECEPTION ROOMS,
EXTENDED KITCHEN WITH BUILT IN
APPLIANCES and REAR GARDEN on
the ground floor. TWO BEDROOMS
and bathroom on the first floor. The
property benefits from central heating
and double glazing, both where
specified.

EARLY VIEWING ESSENTIAL TO AVOID
DISAPPOINTMENT

Energy Performance Certificate : c

Approach

Access is gained via path to :

Reception One

11'3 x 11 (3.43m x 3.35m)

Double glazed bay window to front,
central heating radiator and door to:

Reception Two

12'6 x 11'4 (3.81m x 3.45m)

Double glazed double doors to rear,
central heating radiator, feature
fireplace and stairs to the first floor.

Extended Kitchen

18'10 x 6 (max) (5.74m x 1.83m (max))

Double glazed window to side and
rear, door to garden. Fitted with a
range of matching wall base and
drawer units with work surface over
incorporating stainless steel sink and
drainer with mixer tap over, oven, hob
and extractor, fridge freezer and
dishwasher.

FIRST FLOOR

Landing

Doors off

Bedroom One

11'4 x 11'2 (3.45m x 3.40m)

Double glazed window to front and
central heating radiator.

Bedroom Two

12'2 x 8'4 (3.71m x 2.54m)

Double glazed window to rear and central heating radiator.

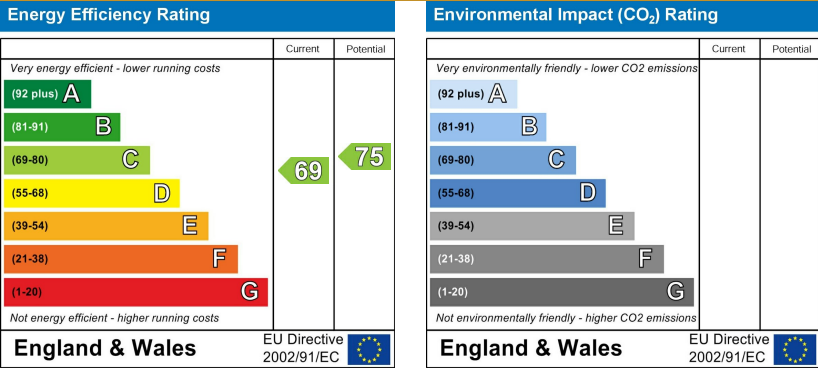
Bathroom

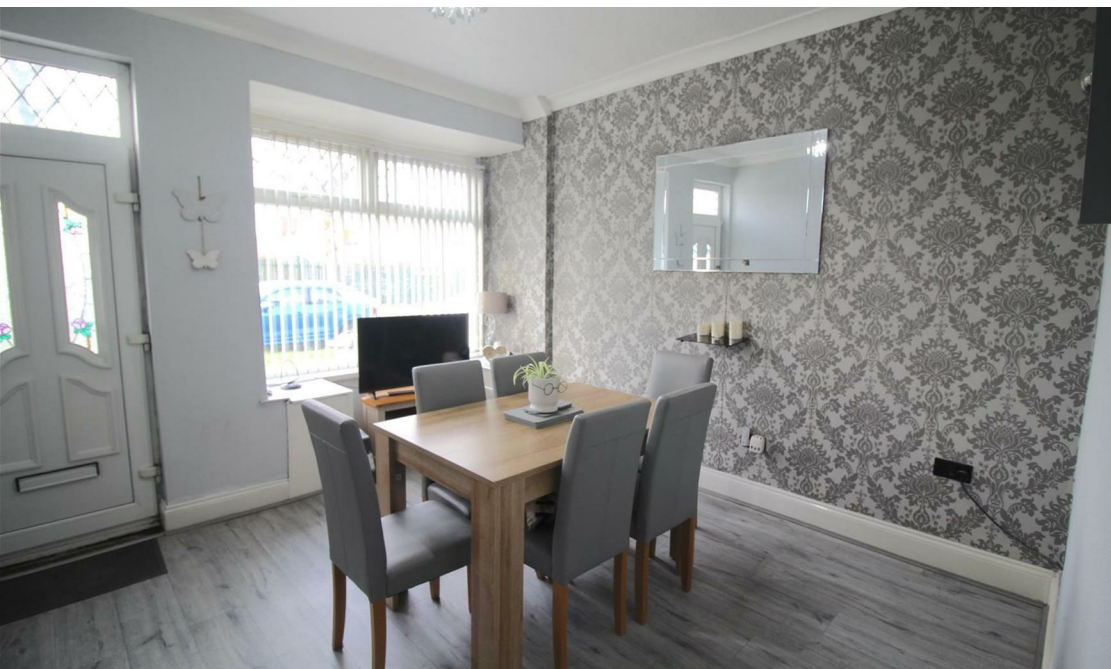
Double glazed frosted window to rear, suite comprising low level w.c, pedestal wash hand basin, panelled bath and heated towel rail.

OUTSIDE

Rear Garden

Enclosed garden with patio area and lawned area





167 - 169 Church Road, Yardley, Birmingham, B25 8UR
yardley@primestatesuk.com