



£200,000

**Severne Road, Birmingham, B27
7HP**

- No Upward Chain
- Terrace Home Ideal First Time Buy
- Lounge
- Kitchen
- Bathroom
- Three Bedrooms
- In Need of Updating
- Driveway
- Rear Garden
- Close to Local Schools, Shops and Transport Links

EPC Rating

Current: D
Potential: B

Council tax band

Band = A

**** NO UPWARD CHAIN **** IN NEED OF UPDATING **** IDEAL FIRST TIME BUY OR BUY TO LET PROPERTY **** THREE DOUBLE BEDROOMS **** POTENTIAL TO EXTEND (SUBJECT TO PLANNING) ****

An EARLY VIEWING IS ESSENTIAL to avoid disappointment on this TERRACE HOUSE on Severne Road, Acocks Green, which is situated close to local shops..... this is a GREAT FIRST TIME BUYER OR INVESTMENT PROPERTY.

The property is accessed via the DRIVEWAY to door with accommodation briefly comprising of: entrance hallway, LOUNGE, KITCHEN, and BATHROOM and rear garden on the ground floor with THREE BEDROOMS to the first floor. The property benefits from central heating and double glazing and is offered with NO UPWARD CHAIN!!

PROPERTY IS IN NEED OF UPDATING - EARLY VIEWING ESSENTIAL

Energy Performance Rating D

APPROACH

Access is gain via driveway leading to:

Hallway

Central heating radiator and door to:

Lounge

15'5 x 11'11 (4.70m x 3.63m)

Double glazed bay window to front and central heating radiator

Kitchen

9'9 x 9'7 (2.97m x 2.92m)

Double glazed window to rear, base units with work surface over stainless steel sink and drainer with taps over

Bathroom

Double glazed frost window to rear low level w.c, panelled bath and wash hand basin.

FIRST FLOOR

Landing

Doors off:

Bedroom One

17'1 x 12'4 (5.21m x 3.76m)

Double glazed window to front and central heating radiator

Bedroom Two

12'10 x 9'3 (3.91m x 2.82m)

Double glazed rear and central heating radiator

Bedroom Three

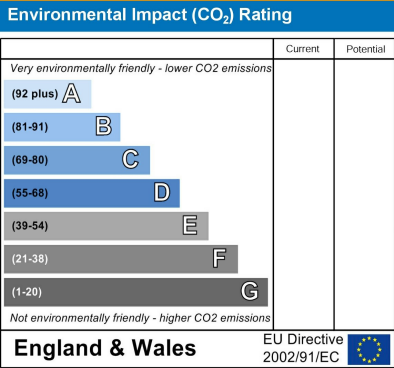
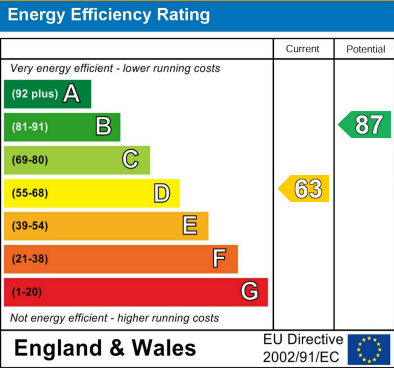
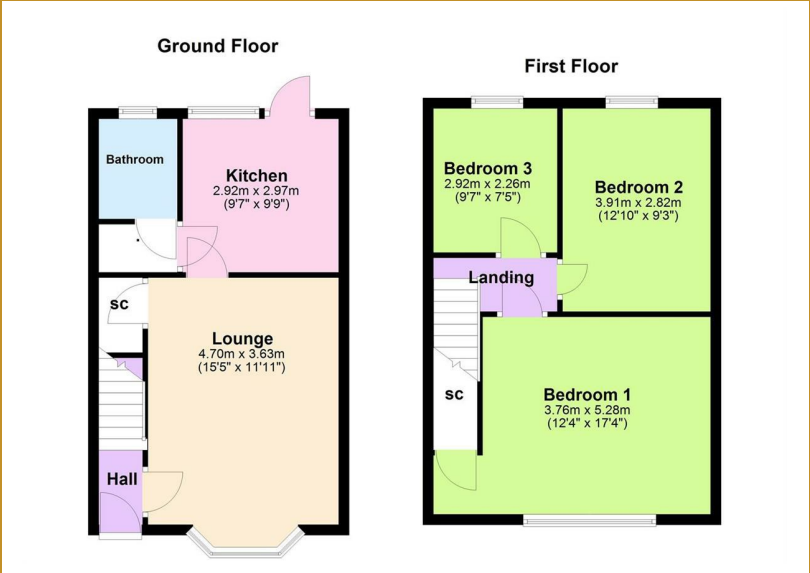
9'7 x 7'5 (2.92m x 2.26m)

Double glazed window to rear and central heating radiator

OUTSIDE

Rear Garden

Being mainly to lawn





167 - 169 Church Road, Yardley, Birmingham, B25 8UR
yardley@primestatesuk.com